

LOCATION: Mirwyn Hundred,
Daenshire,
Kingdom of Kanday

STATUS: Manorial fief
Liege: Sheriff of Daen

GOVERNMENT: Sir Arino of Delourne

POPULATION: 169 persons (31 households)

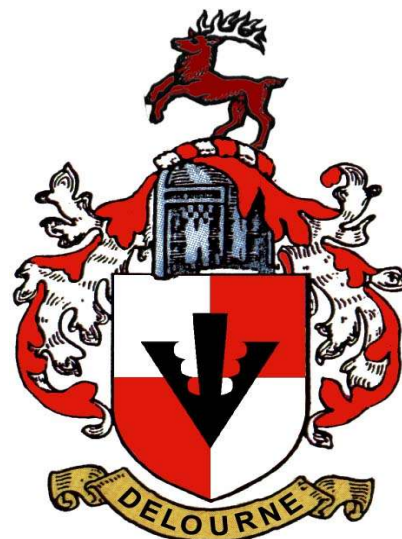
History

On the opposite, southern bank of River Eryn, the Aleathian Queen Elana founded Edino as part of the kingdom's defenses against the expanding Corani Empire.

The two decades following the assimilation of Aleathia into the Corani Empire in 453 TR saw a huge expansion in the Empire. Large areas of forest were cleared and several new settlements were built on the northern bank of the River Eryn. Among these was Gemela, which was founded in 472 when Adric of Gemel was granted permission to build a small manor. The expansion continued despite Emperor Syluds decision to restrict military spending. A decision which led to the loss of much of the north western part of the empire, but which had little effect on the increasingly prosperous Eryn Valley.

When Emperor Mindrithar took control in 491TR he attempted to reverse the decline of the Empire. He chose not to try to recapture many of the more remote outposts of the Empire, but instead concentrated on the lands south of Coranan. In 493 TR he had Caer Moleryn built, followed four years later by Caer Ibonost. This was the last great castle building era of the Corani Empire. By 500 TR Mineous Trail between Dyrisa and Moleryn, known as the King's Way, had been blazed and a number of settlements were being built in the area from the Douwa Downs south to the Eryn River.

In 508 TR it was decided to build a second bridge over the Eryn at Edino; and to connect Edino to Moleryn via a new Imperial road. The bridge was begun in 510 TR and completed in 512 TR. Upon com-



THE ARMS OF CLAN DELOURNE: "*Per cross argent and gule, a pheon sable. Crest: A stag proper with antlers argent. Mantlet: Argent and gules.*"

Credits

Writer & Map Artist

Christian Düntgen (xris@xris.de)

Graphics

Christian Düntgen, Werner Riga

Contributor

Neil Thompson

Editors

Jeremy Baker, S. Scott Bogdan,
Michael Keenan, Markus Mohr, Werner Riga.

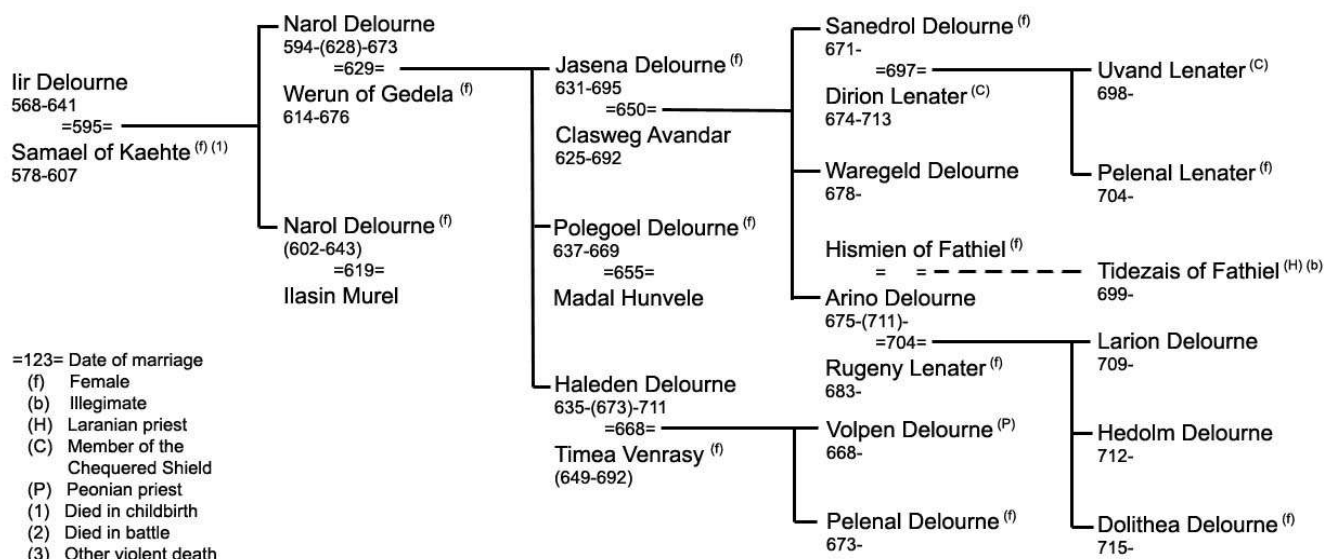
Copyright Notice

This fanon supplement is a derivative work based upon the original copyright work of N. Robin Crossby. No challenge to such intellectual rights as may pertain is intended or implied. It is intended to be used with the great HårnWorld series published by Kelestia Productions Ltd. and Columbia Games Inc.

© 2002-2010 by C. Düntgen

References

www.lythia.com
www.columbiagames.com
www.kelestia.com



Genealogy of Clan Delourne

pletion of the bridge the paved road north from Gemela towards the other settlements was begun. The bridge consisted of two low stone piers, one on each of the two banks of the river and five bridge piers within the river. The bridge deck was wholly of wood and the bridge itself was only 15 feet above the water level, insufficient to allow for navigation. This was a source of great annoyance to the merchants in Dyrisa, as it restricted trade to that settlement. The Dyrisans appealed to the Emperor for either: the bridge to be removed, or, for a high arched stone bridge to be provided. Unfortunately, these request coincided with the death of Mindrithar. Emperor Korad did nothing to resolve the situation, other than to halt the Imperial funding for the Edino-Moleryn road. This had the result that traffic over the bridge was minimal and therefore income from tolls was low.

Over the years the bridge, referred to locally as 'Mindrithars Folly' fell into disrepair. A little over 60 years after its completion, after the collapse of the Empire, the last Corani Governor of Edino, Eladas of Kand was summoned to Dyrisa to face charges of heresy and treason. His son, Andasin, and his followers used the bridge to escape from the Theocrats. Andasin burned the bridge behind him, to prevent pursuit. This action prevented any significant pursuit from Edino and resulted on the Theo-

crats appointed to Edino having to return to Dyrisa to cross the Eryn in pursuit. The time delay allowed Andasin and his followers to disappear into the Mimean Hills.

Today, the five masoned bridge piers are the last visible remains of the bridge. While most of the imperial road's plaster has been broken up, the stones being used during the construction of Caer Gemela and some other buildings, rather intact parts of plaster can still be found at the bridgehead and at several locations along Mineous Trail to the north.

The first structure – named Gemela's Tower after Adric of Gemel – was a motte-and-bailey construction, a stone tower erected atop an artificial earthen hill with adjoining outbuildings surrounded by a ditch and a palisade. Later, a stone wall replaced the palisade enclosure of the courtyard. Adric of Gemel's descendants ruled the slowly growing settlement for the next 150 years. In 628 TR, the house of Gemel died out and King Andasin II granted Gemela to Narol of Delourne, the trusted knight captain of his royal guard, and made him a vassal of the Sheriff of Daen.

During last winter (719 TR), a plague epidemic affecting the lungs killed nine inhabitants of Gemela, a huge loss to the village. The Peonian priest tried to treat the infected victims, but the only potent medicine,

Yulpris was unaffordable (it was rare and too expensive). The lord's failure in supporting the Ebasethe has aroused some bad feeling with the serfs, who were already pressed by high rents and dues to support Sir Arino's lifestyle.

Ruling Clan

Sir Arino of Delourne (born 675 TR) inherited the fief in 711 TR. Additionally, he became the Warden of Mimean Forest in 706 TR by the appointment of Sir Crasel of Avandar, Sheriff of Daen.

Sir Arino is obsessed with the idea of making a political career. He tries to sway the favour of high officials, such as the sheriff or the chancellor, through valuable gifts and frequent attendance at the Sheriff's and King's courts. To finance his ambitious plans, he has severely pressed his tenants and inhabitants of Mimea Forest, the latter without having a legal claim, since he didn't report the new settlements to the sheriff, nor pays obligations for

this income.

Sir Arino is married to Lady Rugeny of Lenater, whose clan holds Qumavern (Asolena Hundred/Selionshire). They have three legitimate children: two sons (11 and 8) and a daughter (5). Sir Arino has arranged for his eldest son, Larion, to become squire of a knight commander at Dyrisa, and thus a member of the royal household, later this year (720 TR).

Tidezais of Fathiel, Sir Arino's Laranian chaplain, is the unacknowledged bastard son of Sir Arino and Hismien of Fathiel, now the chef of the manor's kitchen. This fact is known only to three persons: Sir Arino, Hismien and her husband, the lord's chamberlain.

Sir Arino supports his widowed sister, Lady Saneodrel of Delourne, and a young niece, Miss Pelenal of Lenater, who acts as Lady Rugeny's lady in waiting.

Waregeld of Delourne is Sir Arino's younger brother. Waregeld has a crippled arm, missing the swear (right) hand, from birth. This impairment made him unacceptable for knighthood or priesthood. Since Arino inherited the manor, he has hidden his brother in the manorhouse or, whenever visitors of high rank stay at Gemela, in a hunting lodge, thinking of him as a "disgrace to the clan". For this reason, Waregeld hates his brother with a passion.

Sir Arino's scheming behaviour has earned him the mistrust of Sir Dirithon Murel, the Warden of Mineous Forest. Sir Dirithon has close familial ties to the Gozyda clans in Mineous and Mimean Forests. Since Sir Arino has pressed several smaller Gozydan families by now, Sir Dirithon fears that this behaviour could stress the relationship between the Gozyda and the House of Kand. To get informed on Sir Arinos plans, Sir Dirithon has enabled a network of informants who pass information to him.

Government

Sir Delourne employs two mercenaries to guard his manor. This force is strengthened by



Sir Arino of Delourne

two yeomen and a poorly trained peasant militia.

As the Warden of Mimean Forest, Sir Arino of Delourne commands six Royal Foresters. These are skilled hunters, trappers and long-bowmen, who usually patrol the forest. There are two hunting lodges within Mimean Forest, which are used as bases for their operation. When traveling within the wilderness, Sir Arino is most often escorted by two of the foresters – usually Sabel of Useam (22 – Sir Arino's present mistress) and Walern of Doro (42 – an experienced tracker and hunter).

Throughout Mimean Forest, the foresters are feared for their brutality. They regularly visit all permanent settlements in the forest to “collect taxes” for the Warden. Refusal to meet these demands soon results in beatings or worse.

Economics

Agriculture, Fishing and Forestry

The peasants of Gemela mainly grow barley and sweet hay. Sheep and goats graze on the pastures. Some of the peasants produce a strong, flavoursome goat cheese.

Two households have specialised in fishing.

Due to its isolated location on the densely wooded eastern bank of the Eryn, there is no lack of wood, neither for construction, nor for fires.

The charcoaler consumes large quantities of wood to produce charcoal.

Exported goods: wool, cheese.
Imported goods: (none)

Crafts

Most craftsmen (miller, woodcrafter, metal-smith) produce for local consumption. They sell the majority of their products to the resident peasantry or occasionally to other clientele, such as trappers, hunters, and other wood-

dwellers.

They also attend the quarterly markets at Edino, just across the Eryn, to sell their products to the more affluent clientele there.

The resident charcoaler and two more charcoalers licenced by the warden of Mineous Forest produce enough charcoal to supply most of the smithies in Dunzael Hundred.

The hideworker obtains hides and pelts from trappers and other wood-dwellers, tans them and sells most of them at the Edino Fair. He also produces large amounts of tanbark which is sold to mercantylers at Edino who pass the product to hideworkers in Dyrisa and Aleath.

Exported goods: hides, pelts, tan, charcoal.
Imported goods: salt, raw metals.

Trade

Since no major trail leads to Gemela, nor does it have a port, there is very little trade. The proximity of Edino and its market are sufficient to support the needs of Gemela.

Taxes

MERCHET: 12,00%
HERIOT: The best animal of the deceased

The taxes, dues, rents and fees have been very high at Gemela since Sir Arino inherited the fief. He hopes to use the revenue from these to finance his ambitious plans for his political career.

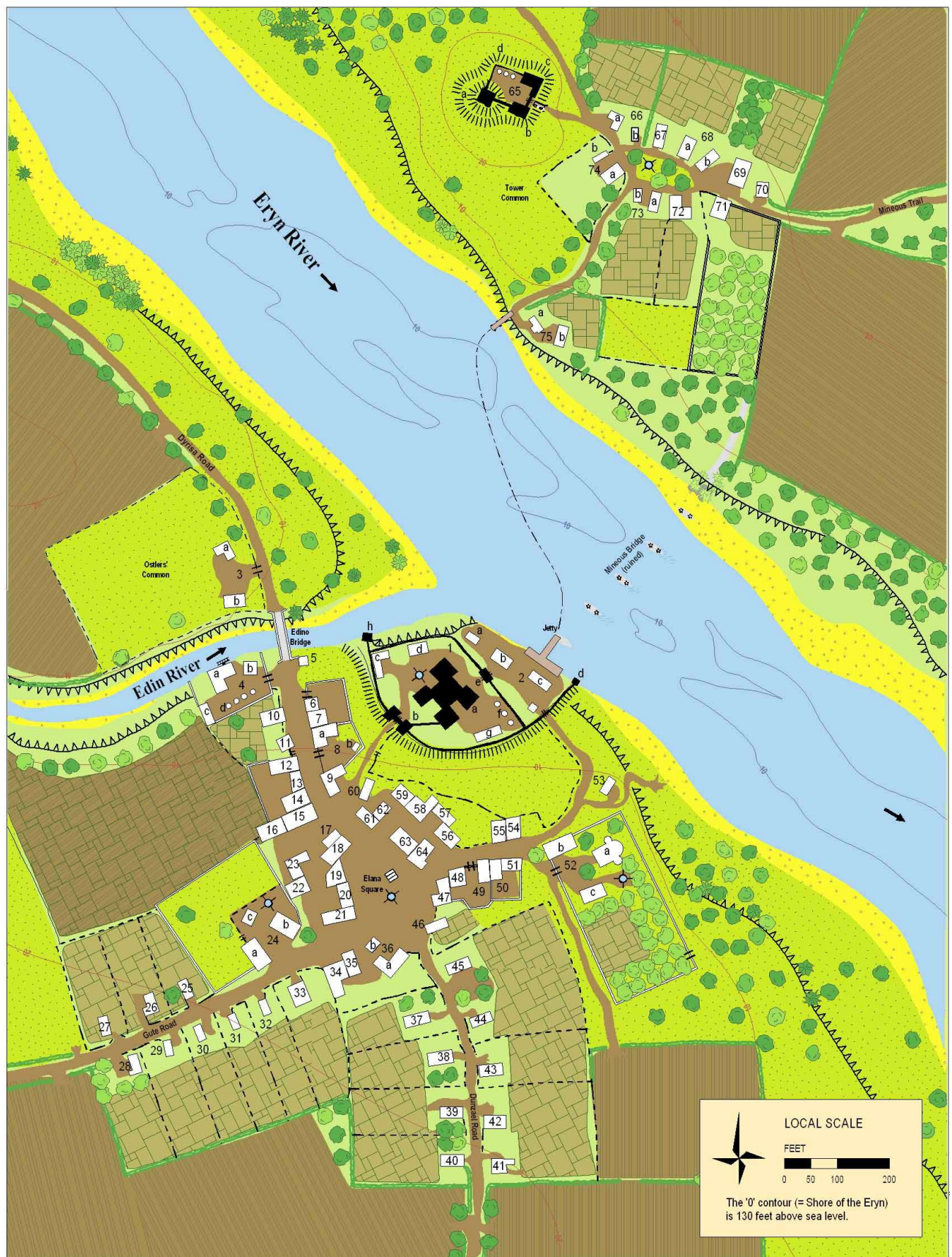
Religion

As usual in Kanday, the worship of Morgath, Naveh and Agrik is proscribed. The worship of Ilvir and Sarajin is discouraged and the churches of Halea and Save-K'nor are tolerated. The churches of Larani and Peoni are supported and tax exempt.

There is a Shrine of Peoni in the village [see Map Key 85] and a Laranian Chapel in the manorhouse.

EDINO & GEMELA

COMMON MAP



Map Key (Gemela only)

(FOR INFORMATION ON KEY NUMBERS 1 TO 64, SEE "EDINO"):

65 **GEMELA MANOR**
The manorhouse is described in detail on the following pages. The complex consists of:

- [A] **GEMELA'S TOWER**
The residence of Sir Arino of Delourne.
- [B] **KITCHEN**
- [C] **STABLES AND BARN**
(bonded ostler Balegad of Jawold)
- [D] **GRANARIES**

66 **HALF-VILLEIN – EVEHEEL OF DOLAIDIN**
Eveheel (31) is a skilled fruit grower and tends for the lord's orchards. His wife died from an epidemic lung disease during last winter. Now, Eveheel has to take care of his daughter (6) and two young sons (3 and 1) on his own.

67 **VILLEIN – TUSNOESS OF EUMIL**
Tusnoess' (27) husband, Kidas of Edomil, a crude drinker, died in an accident during the harsh winter of 716 TR, when he slipped on the frozen Eryn and broke his neck. Rumors say that Tusnoess may have helped it along. Her selions seem to bear more fruits than others. Tusnoess' son (10) and daughter (4) are regularly harassed by the village's children. In fact, she's just a competent farmer and glad about – but not guilty of – her husband's fate. Tusnoess gets support from her father [88] and brother [83] and has petitioned Sir Arino to stop the slandering and gossip, but the lord has so far ignored her case.

68 **WOODCRAFTER – TIDEZAIS FATHIEL**
Size: 3 Quality: 4 Prices: *high*
Tidezais' (32) business has been supported by his oldest niece (21) for some time. She has, however, just finished her apprenticeship and will leave his business this year. Tidezais therefore needs to find a new apprentice. His two daughters (9 and 1) and his twin-boys (3) mean lots of trouble for their overburdened mother (25).

69 **FARMER – ILHER OF KAEHTE**
Ilher (33) farms 50 acres of land, the largest farm within the fief, with the assistance of a farm hand. He has three sons (12, 10 and 7) and a daughter (8). His wife and a newborn daughter died this past winter during the epidemic.

70 **VILLEIN – RYBEAIN OF REVTEL**
Rybeain (59) is a competent farmer. He and his wife (54) are supported by the family of his oldest son (36) – his daughter-in-law (33) and four granddaughters (12, 9, 7 and 4). Since Rybeain's second son Rieaer (26) ran away in 716 TR, Rybeain's family is frequently harassed by Sir Arino and his men. Rieaer managed to escape to Iben's Lode Mine within Mineous Forest. He was declared free after having worked in the mines for about a year, married and founded a family. Last spring, Sir Arino found out about Rieaer's whereabouts. He travelled to the mine and demanded the surrender of "his property". The Miners' Guild promptly rejected his demand and Sir Arino furiously left the mine. Last winter, Rieaer and his brother-in-law disappeared traceless. Their families suspect Sir Arino having hired bandits to abduct their husbands and making an example of them.

71 **YEOMAN (MF) – DERMIER OF NIRENDEL**
Dermier (41) owes 80 days of service to Sir Arino Delourne. His son Hebrén (19) seems becoming a promising farmer and fighter – he is Dermier's pride and joy. His oldest daughter Warun has just married the oldest son of Jankez of Lagon, one of the foresters of Mineous Forest [see *LAGON'S HIDE LODGE* in the "MINEOUS FOREST" article]. Dermier and his wife (38) now only have to care for their younger daughters (11 and 8). Dernier occasionally passes information on Sir Arino to his son-in-law, who forwards it to Sir Dirithon of Murel.

72 **VILLEIN/REEVE – AMIK OF EDMIL**
Amik (39) is a heavily-stressed man. Besides his duty as the village's reeve, he is the head of Clan Edomil and has to support his

younger brother (32) and three little boys, his own son (4) and his two nephews (1 and 3). His wife, a daughter and his brother's wife died during the epidemic last winter. As does his cousin Nimanna, he believes that Tusnoess killed her husband, who was also his cousin, and as such has refused to support Tusnoess or her children. Since the plague last winter he openly supports Nimanna's views.

73 METALSMITH – EVEBEER OF MODARIL

Size: 3 Quality: 4 Prices: *high*

Evebeer (43) is married and he and his wife (36) have two daughters (13 and 2). Since the manor's weaponcrafter left soon after Sir Arino took over the fief, Evebeer had been repeatedly called upon by Sir Arino to repair of weapons and armor. At first, Sir Arino requested Evebeer's services only occasionally, but this has become more regular – and recently, the lord asked him for a new broadsword. Since this would be a severe breach of the weaponcrafters' privilege, Evebeer is trapped between rejecting his lord's request and being in danger of trouble with the Mangai. Evebeer has a wonderful voice and is an excellent singer. He often is often asked to take part in the Laranian masses in the lord's chapel.

74 VILLEIN – ENDEZON OF ERUTE

Endezon (37) and his wife (36) are childless, but support a widowed niece (21) and her son (3).

75 HIDEWORKER – MAVEL OF CALENIR

Size: 1 Quality: 4 Prices: *average*

Mavel (36) supports two young nephews (11 and 6). He primarily tans pelts and sells them at the Edino Fair to clothiers and mercantylers (see "*EDINO*"). Mavel obtains pelts from Sir Arino's foresters. He also passes hints about poachers to the foresters to earn some favours or extra money. Those who sell him illegally obtained pelts will soon make the acquaintance of the brutal foresters.

Offmap

Besides the settlement at the former bridgehead, two further small hamlets belong to

Gemela manor.

Kaehte Hamlet

Kaehte Hamlet emerged from the farm of an imperial Veteran, Rybeain Kaehte. It is located en route to Ibonost on the southern part of the planned imperial road, quarter a mile along Mineous Trail to the southeast. The road was planned to circumvent the Lanisor elevations southerly through its foothills until meeting the Mina stream and then upstream the Mina valley between the Lanisor and Valdrum ranges to the north to meet the Dyrisa-Ibonost-Road. Today, Kaehte is the fief's center of agriculture and social life.

76 MILLER – KALIFUS OF AMLAIN

Size: 3 Quality: 2 Prices: *average*

Kalifus obtained the franchise six years ago, in 714 TR, when his predecessor died childless. Kalifus (47), his son (24) and an apprentice (18) operate an ox-powered mill. Kalifus would like to construct a water powered mill, but can't yet afford it alone – and since Sir Arino has no interest spending his funds on such long-term based projects, he has problems in finding a financier.

77 HALF-VILLEIN – INATTE OF EUMIL

Inatte (32), his wife (28) and son (10) are known as friendly and unobtrusive people. He has so far managed to keep his own family out of the conflict between clans the Eumil and Edomil clans.

78 CHARCOALER/WOODWARD – ERASDAN OF LAMOREL

Size: 3 Quality: 3 Prices: *low*

Erasdan (34), his wife (28 and a charcoaler journeyman), and an apprentice (a 15 year old lad) produce charcoal and tar in the woods east of Gemela. For this purpose, they maintain a log cabin with a wood storage, a charcoal kiln and a tar oven in the woods, one Hârníc league to the north east. From the Warden of Mineous Forest, Sir Dirithon Murel, Erasdan has obtained a license to cut wood in Mineous Forest. Sir Dirithon is known as a generous patron of the Charcoalers' Guild, and

the license fee is very low, so Erasdan can cut wood for nearly free and produce charcoal and tar very cheaply, thus making considerable profit by selling the charcoal to smiths and mercantylers on the Edino markets. Additionally, Erasdan is Sir Arino's woodward and responsible for the assart. Unbeknown, Erasdan and his wife act as informants for Sir Dirithon.

79 **COTTAR – DIEHFAM OF EUMIL**
Diehfam's (30) wife died in birth of his youngest son last year. When he works the land of Sir Arino, his uncle Ryif takes care of his sons (8, 0) and daughter (3). His attempts to mediate between his uncle and the reeve have failed.

80 **YEOMAN (LB) – UVINFUS OF KAEHTE**
Uvinfus (49) is a descendent of the veteran, who founded the hamlet as an imperial colonus. He is an excellent archer and owes 60 day of service to his lord. His land is worked by his sons (26, 21 and 12) and a farmhand. His oldest son is married (22) and has a son (2) and a daughter (5).

81 **VILLEIN/HERDER – INMIRT OF SANOAN**
Inmiri (26) has a wife (26), a daughter (8) and a son (2). He is a very athletic, attractive and seductive man. Inmiri spends much of his time alone on the pastures to keep watch over his lord's herds. Rumors that speak of Inmirt being the father of the beadle's son [see 94] have concerned his wife. She does not know whom to believe and would like to observe her husband – but with two children and working most of the land, she lacks the time to visit the far-off pastures.

82 **COTTAR/FISHER – EVEMAOL OF SANOAN**
Evemaol (40) and his family – wife (37), sons (19, 7, 4) and daughters (15, 11) – are devout Peonians. For a fare, Evemaol or his oldest son Haged occasionally ferry residents and travellers across the Eryn to Edino, or as far as to Murelno or Dyrisa. Besides his cottage at Kaehte, Evemaol owns a hut on the northern bank of the Eryn, where he stores his boat and fishing equipment.

83 **HALF-VILLEIN – RYVAIN OF EUMIL**
Ryvain (29) is a brother of Tusnoess and known as a thug. He has repeatedly threatened to beat up anyone who calls his sister a murderer or witch. Ryvain was widowed in 718 TR and has two surviving sons (9 and 5) and a daughter (3).

84 **HALF-VILLEIN – TIEHARD OF EDOMIL**
Tiehard (37) lives with his sons (17 and 13). He has tried to calm his cousin Nim-anna, but failed thus far.

85 **SHRINE OF PEONI – EBASETHE HISMEN OF KALENDIR**
Hismien (51) has long been a pious servant of Peoni and a loyal follower of the local lord. But now she is frustrated by the grim harvest of last winter's pneumonic plague and Sir Arino's failure to support his serfs. She tried to treat the infected people, but could not afford to buy Yulpris to heal them. Sir Arino ignored her pleas for support and though the Peonian temple at Edino sent most of their potent herbs, they were not enough. Hismien has lost her trust in Clan Delourne's leadership. She has repeatedly reminded the peasantry of the nobles' obligations toward their serfs in her sermons. Sir Arino has not taken notice of this veiled threat so far. Hismien is supported by a niece (25), who has a son (10) and tiny daughter (4).

86 **HALF-VILLEIN – ESANA OF EDOMIL**
Esana (28) supports her cousin Nim-anna by spreading gossip about Tusnoess and Clan Eumil. She has two sons (12 and 6) and two daughters (9 and 4) who lost their father this winter.

87 **VILLEIN – DIUON OF ERUTE**
Diuon's (41) family consists of his wife (38) and five sons (19, 15, 12, 8 and 5). Diuon is the most competent farmer within the village. He dislikes the reeve due to his lack of competence.

88 **HALF-VILLEIN/FISHER – RYIF OF EUMIL**
Ryif is a pugnacious man of 54 and head of Clan Eumil. He lives with his oldest

son (31), his daughter-in-law (26) and granddaughters (6 and 2). Ryif uses nets and fish traps to along the Eryn and in several small ponds and lakes around the manor.

Ryif never liked his son-in-law, Kidas of Edomil, calling him a useless drunkard. When Kidas died in 716 TR, Clan Edomil refused to take care of his daughter Tasnoess and her children [see 67]. This has resulted in enmity between Clans Eumil and Edomil. Ever since Nimanna of Edomil started calling Tusnoess a witch, he has defended his daughter against these false accusations and his emotions have lately caused him to become more aggressive.

89 **HALF-VILLEIN – MEDOT OF DOLAIDIN**
Medot (47) lives with his wife (45), his youngest, unmarried brother (38), three of his four sons (24, 21, 19 and 16) and the family of his oldest son – as well as his son's wife (22) and a daughter (3). Medot's youngest son Lasweg (16) is Sir Arino's kennel-boy and lives at one of the hunting lodges.

Linmite Hamlet

Linmite is a hamlet of only six households, located a quarter of a league to the northwest, at the ending of the road leaving the local map to the north west.

90 **FARMER – KHEEAARD OF CALENIR**
Kheeaard (34) is a clever man and a passionate poacher. He regularly stride through the woods to hunt wild poultry, rabbits and deer. The lord has recognised that someone hunts in his woods, but the foresters have repeatedly failed to track down the poacher – perhaps because one of Sir Arino's foresters, Galed of Calenir, is Kheeaard's brother. Kheeaard has a wife (32) and two sons (11 and 8). Seven years ago, he was attacked by a boar while roaming the woods. He killed the wild boar, but was seriously wounded. This adventure has left characteristic scars on his left thigh.

91 **VILLEIN – RIEAER OF REVTEL**
Rieaer is the head of Clan Reviel. He used to dislike the reeve and his kin. Since the

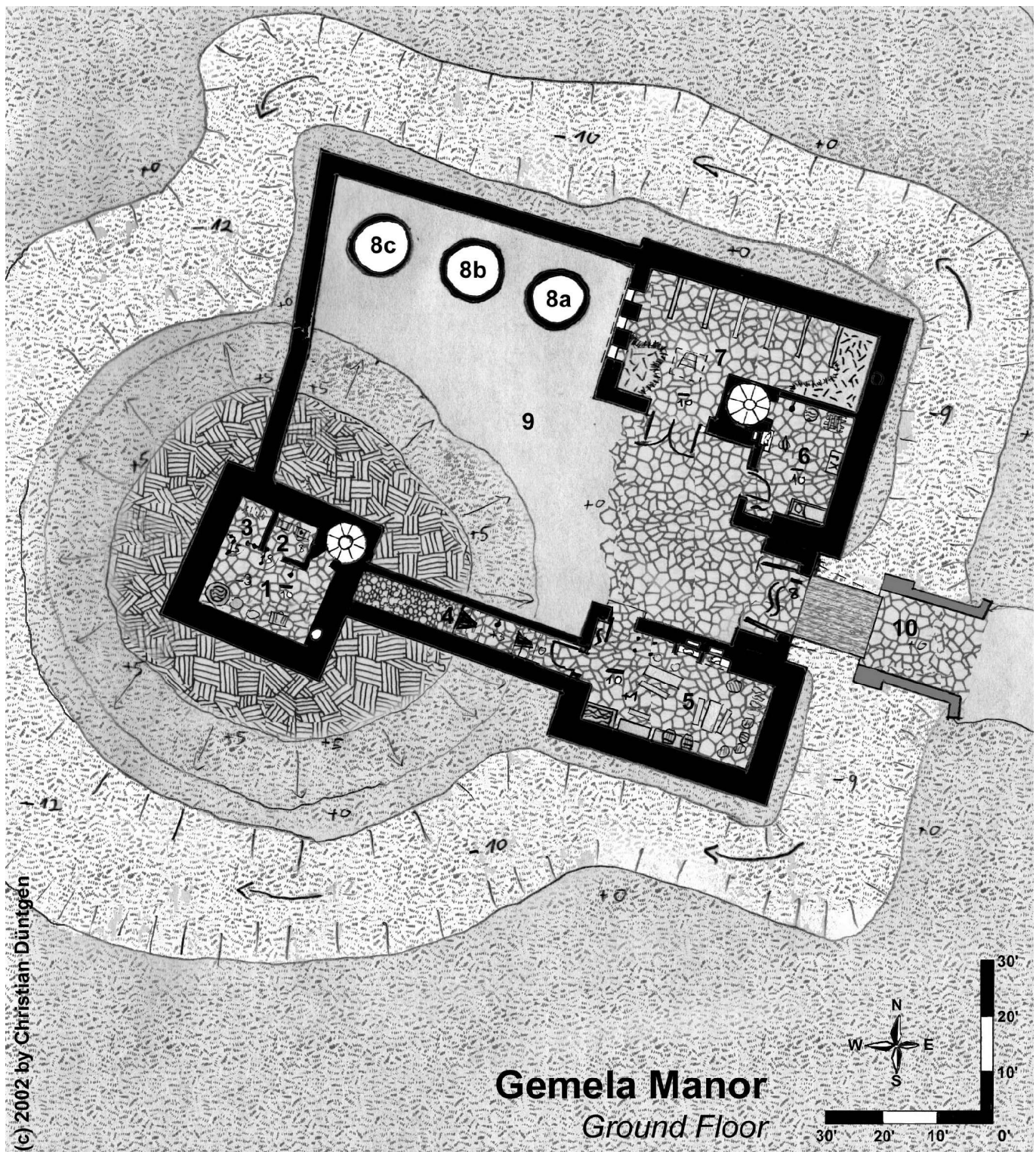
plague killed his wife and he now has to care for his four sons (12, 8, 5 and 2) alone, things have become difficult for him.

92 **HALF-VILLEIN – NIMANNA OF EDMIL**
Nimanna (28) has lost her husband this winter due to the pneumonic plague. She is now to face serious problems with feeding her two sons (9 and 4) and a daughter (2). Nimanna has always hated her sister-in-law, Tusnoess of Eumil. She has spread rumors of Tusnoess having killed her brother for almost three years. The death of her husband has further outraged this young and desperate woman. Now, she also accuses Tusnoess of having started the pneumonic plague by means of witchcraft. As the enmity of Nimanna towards Tusnoess is well known to most villagers and the clerics, these new accusations have had few effect. Despite of this, it has fueled the conflict between clans Edomil and Eumil.

93 **VILLEIN – DIRON OF REVTEL**
Diron (25) and his wife (19) have a son (4) and a daughter (1).

94 **COTTAR/BEADLE – SATIMA OF DOLAIDIN**
Satima (26) is a self assured, strong-willed and even physically powerful woman. Normally, she has few problems with the villagers, but now, she is faced with a more serious problem: the gossip about Tusnoess of Eumil has stirred up the village. Though she has asked Sir Arino for his decision in this question, she has yet to get a response. Satima hesitates to report Ebasethe Hismien's sermons [see 85] to the lord. The sermons could be interpreted as an indirect call to rebellion by Sir Delourne, his chaplain or the beadle. Saiima has an illegitimate son of three years of age. Gossip reports Inmirt of Sanoan of being the father [see 81].

95 **HALF-VILLEIN – LINMITA OF ERUTE**
Linmita's (46) oldest son, Jadost (27), is Sir Arino's falconer and lives at one of the hunting lodges in Mimean Forest. She has two daughters (24 and 11) and two other sons (9 and 4).



Gemela Manor
Ground Floor

Gemela Manor

Ground Floor

1 **CELLAR.** This room is used as a storage area. The well in the south-west corner is the main water supply for the manor house.

2 **ARMOURY.** The iron gate is secured with a complex lock (rating: 8). The armoury holds various weapons (spears, bows, arrows) and a locked chest (lock complexity: 8). The locked chest contains Sir Delourne's treasure (silver and jewels, together a value of 43 pounds), as well as the lord's most important documents. Sir Arino wears a key to the armoury together with the only key to the

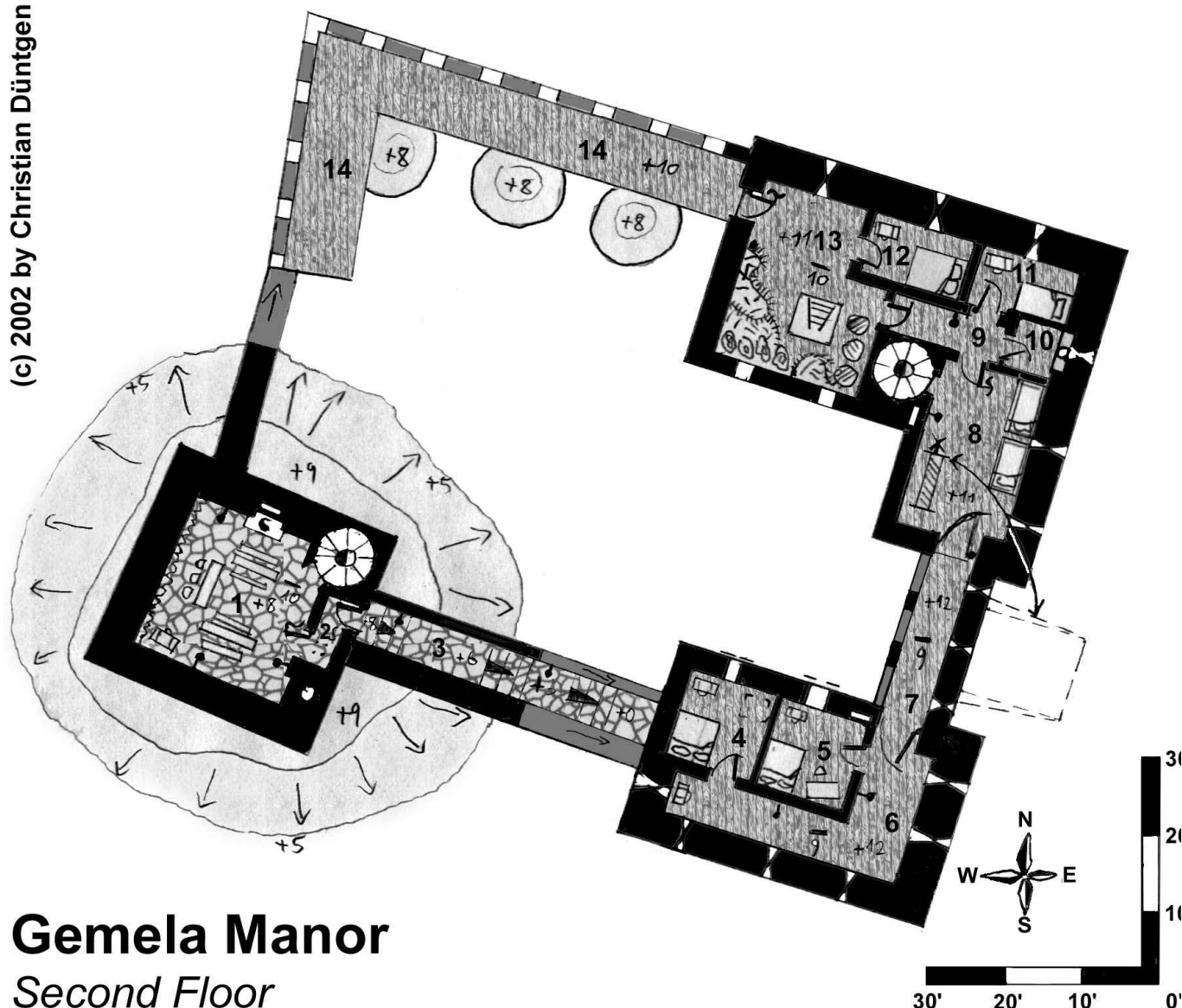
treasure chest on a necklace around his neck. The second key to the armoury is kept by the chamberlain, Erasdan of Kaehte.

3 **HOLDING CELL.** Occasionally, serfs or offenders against the forest law are kept here for several days. The lock is of moderate complexity (5).

4 **PASSAGEWAY.** The only access to Gemela's Tower is by way of this passage from the kitchen. The way is shielded by two walls. There are three flights of three steps each, to ease the ascending onto the motte. Two torches light the way.

5 **KITCHEN.** This is the realm of the manor's chef, Hismien of Fathiel (38), the chamberlain's wife. She controls the preparati-

(c) 2002 by Christian Düntgen



Gemela Manor Second Floor

on of all dishes served to the nobles. Hismien is an excellent cook and her menus have impressed more than one of Sir Arino's important guests. The alewife, Peonoel of Sanoan (56), brews acceptable ales, but the lord prefers wine.

The steady use of the large hearth and an oven makes the kitchen the only permanently heated room in the manor house and popular with most servants, who sleep on straw mattresses on the floor. Water from the well in Gemela's Tower is preferred to water from the cistern in the south east corner for cooking and brewing. The door to the kitchen can be barred with a massive wooden beam. A trap door in the ceiling is unused since the room above [see second floor, room 4] was changed into a living room.

6 SMITHY. The last weaponsmith quit his contract in 713 "for personal reasons". As Sir Arino's expenses have grown steadily since then, he has still not replaced him. The bunk beds in the corner are now used for foreresters during their visits to the manor.

7 STABLE. There are seven boxes, six of them in use. The horses are looked after by a bonded ostler and his apprentice, who live on the second floor.

8 GRANARIES. Three granaries hold corn for the garrison and the village. The granaries are accessed by trap doors on their roofs.

Second Floor

1 GEMELA HALL. The Great Hall is the place of the lord's hall moots and occasional trials of offenders against forest law (most offenders are punished on the spot). A fireplace heats the hall in winter and during feasts. The hall has no gallery, so ladies are seated on the same floor.

2 CORRIDOR. The access to Gemela's Tower is by two massive doors, that can be barred with wooden beams. A murder hole in the ceiling may give an unwelcome sur-

prise to intruders who make it past the first door.

3 PASSAGEWAY. (See key number 4 on the ground floor.)

4 CHAMBERLAIN AND CHEF. The manor's chamberlain, Erasdan of Kaehte (35), lives here with his wife, the chef Hismien of Fathiel (38). Years ago, Hismiel was raped by Sir Arino and became pregnant. Her only son, Tidezais of Fathiel (21), is still unacknowledged by Sir Arino, but Sir Arino sponsored his study at Chyndaen Abbey and made Hismiel his chief cook. Later, Hismiel married Erasdan. Since this room was changed into a living room years before, there is no use for the trap door to the kitchen [ground floor, room 5] in the floor nowadays.

5 LADY SANEDROEL OF DELOURNE. Sir Arino's sister, lives in this room. The warmth from the kitchen beneath makes this chamber more comfortable than most of the other rooms. Lady Sanedroel (49) is widowed. She was married to Sir Diron of Lenater, a Melana (Knight of the Order of the Chequered Shield). She has a son, Sir Uvand of Lenater (22) and a daughter, Pelenal of Lenater (16). Uvand has respected the wish of his father and entered the Chequered Shield last year. Pelenal is unmarried and lives with her mother.

6 CORRIDOR. This corridor is part of the manor's defenses. Several arrow slits can be used to aim at attackers across the dry ditch.

7 GATEHOUSE. The only access to the second floor of the kitchen building runs above the gate and possesses a number of arrow slits.

8 GUARDROOM. The bunk beds in this room are used by the lord's men-at-arms, Werdel of Samek (34) and Nasred of Nirendel (37) and the foresters. The winch operates the drawbridge across the dry ditch on the ground floor. The drawbridge is usually lowered even at night. Either Werdel or Nasred is on guard;

by day at the drawbridge, and by night within the gatehouse.

9 CORRIDOR.

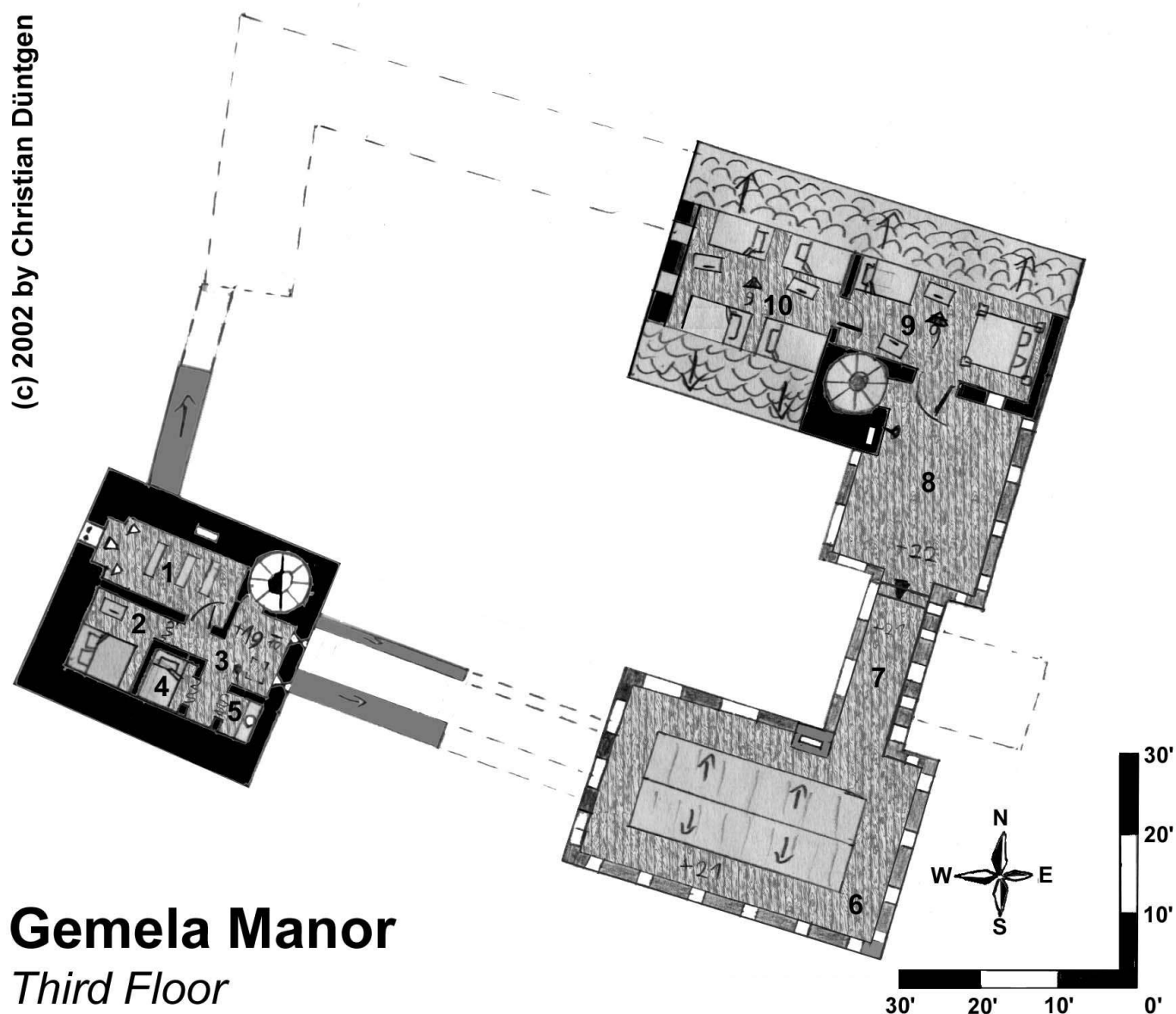
10 LAVATORY.

11 CLOTHIER. Bonded master clothier Rybeain of Selvon (m49) has specialized in men's fashion. He makes two sets of clothing for Sir Arino, Lady Rugeny and one for each of their children per year. Rybeain is addicted to Fanosel, a narcotic drug. He regularly accompanies Sir Arino on his visits of the Royal Court at Dyrisa, to visit the Halean Temple and meet a friend who deals in the drug.

12 OSTLER. The lord's stable is operated by bonded master ostler Balegad of Jawold (28). He has recently married Kaleia of Huleben, the daughter of his former master against her clan's will. Kaleia's father deemed Balegad unable to support a family and interdicted any contact between the two lovers. Though, after accepting the job at Gemela, Balegad returned and secretly arranged a meeting with Kaleia, convincing the young woman to marry and flee with him. Balegad's apprentice sleeps in the hayloft.

13 HAYLOFT. A small amount of straw, hay and fodder for the lord's horses is stored here. The ostler's apprentice, Ridard

(c) 2002 by Christian Düntgen



Gemela Manor
Third Floor

(m14) sleeps in the hay. The door on the west wall gives access to the wall walk.

14 **WALL WALK.** The battlements raise up to 15' above the ground. The wooden wall walk traverses only half of the wall.

Third Floor

1 **LARANIAN CHAPEL.** The chaplain holds a daily mass in the morning. The chapel is the only windowed room on this floor. The statue to the right shows Larani as the "Lady of Flowing Red" with Avarkiel and Oathbinder. The statue in the middle shows the goddess as the "Lady of Paladins". The third statue, to the left, shows Larani's Constable Mendiz, as a winged red lion. All statues are made of wood, and painted in bright colors. The altar and the benches are made of simple wood.

2 **GUEST ROOM.** Noble guests are usually quartered in this room.

3 **CORRIDOR.**

4 **CHAPLAIN.** Matakea Tidezais of Fathiel (21) was sent to Gemela on behalf of the Obasaran of Chyndaen Abbey. He is a unacknowledged illegitimate son of Sir Arino. His mother Hismien of Fathiel, the lord's chef, is very proud of her son, whose study was sponsored by Sir Arino. Besides the masses, Tidezais teaches the lord's children and acts as the lord's chancellor.

5 **LAVATORY.**

6 **BATTLE PLATFORM.** The roof of the kitchen building is fully surrounded by battlements and can be used to counter attacking enemies.

7 **BATTLE PLATFORM (SEE 6).**

8 **BATTLE PLATFORM (SEE 6).**

9 **Waregeld of Delourne.** Waregeld (42), is Sir Arino's younger brother. His sword arm has been crippled since birth. This

impairment precluded any possibility of his becoming a knight or Laranian priest, as his attempts to take on a novitiate at Chyndaen Abbey were rejected by the Serolan due to the missing arm. Since Arino inherited the manor, he has hidden Waregeld, considering him to be a "disgrace of the clan". For this reason, Waregeld hates his brother with a passion. He covertly observes Arino's actions and collects information on his brother's plans, sexual affairs and misdemeanours. He would be happy to share his knowledge with anyone who opposes Arino's goals. Waregeld spends a considerable part of his time with the chaplain and his nephews and niece, slowly turning them against their father.

10 **CHILDREN'S ROOM.** The lord's legitimate offspring sleeps in this chamber: Larion of Delourne (m11) Hedolm of Delourne (m8), Dolithea of Delourne (f5). The nursemaid Aldain of Dolaidin (31) spends most of the day with both of her younger charges. The oldest boy acts as Lady Sanedroel's page and will leave the household this year to become a squire at the royal court at Dyrisa. Larion is very proud of this accomplishment, as he sees it.

Fourth Floor

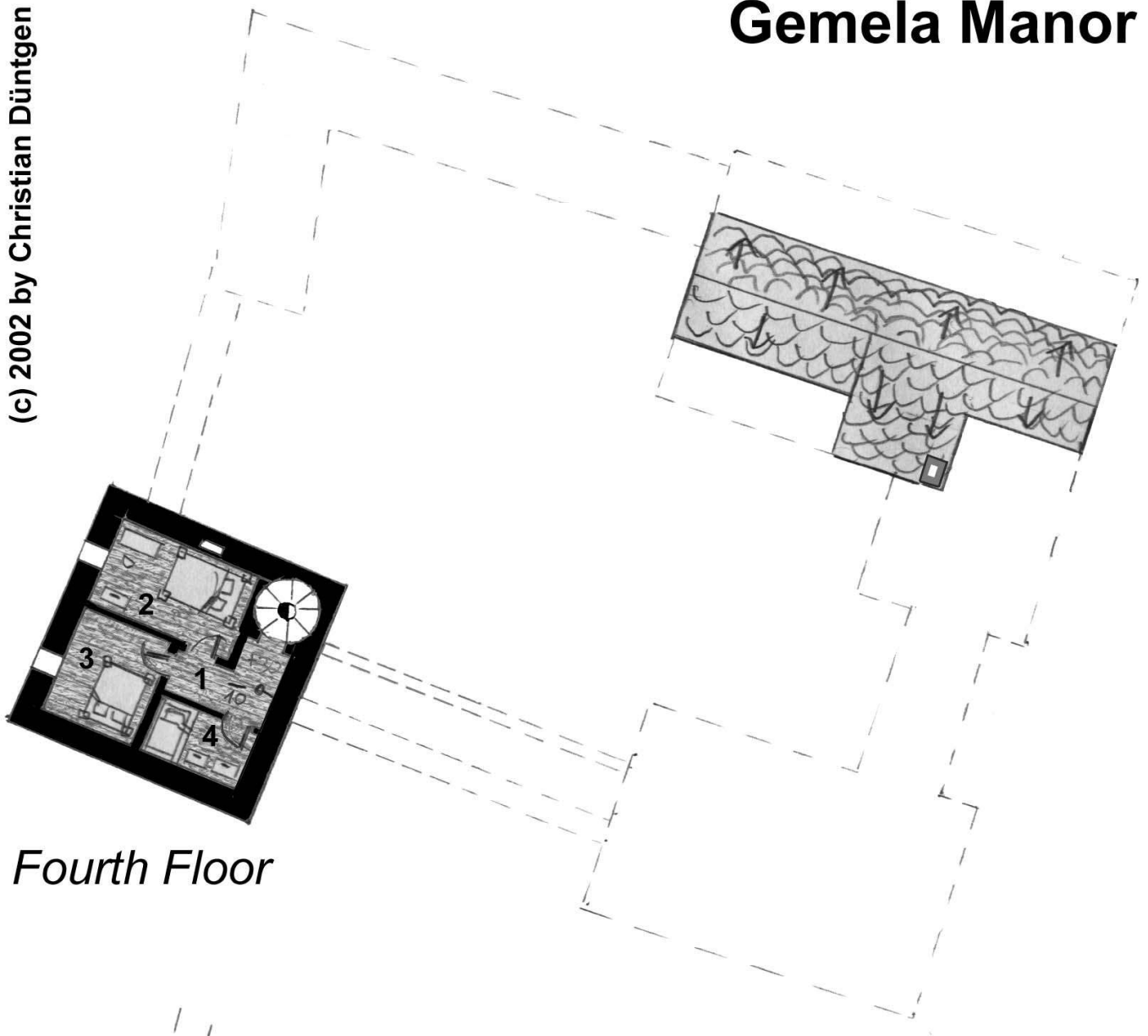
1 **CORRIDOR.**

2 **LORD ARINO OF DELOURNE'S ROOM.** When in Gemela, Sir Arino stays here and is usually on his own. The chest contains some documents and a part of the lord's wardrobe.

3 **LADY RUGENY OF LENATER.** Lady Rugeny (37) has never loved her husband and vice versa. It was a political marriage as are most others within the nobility. Lady Rugeny is aware of Sir Arino's escapades with various women, but as Arino usually visits his mistresses outside the keep, this does not overly trouble the Lady of the house. Lady Rugeny regularly accompanies her husband on visits to the Sheriff's or the King's court.

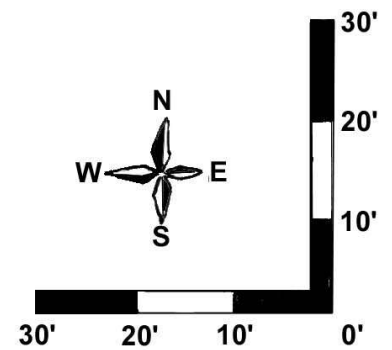
Gemela Manor

(c) 2002 by Christian Düntgen



Fourth Floor

Roof



4 **SERVANTS' ROOM.** Sir Arino's squire, Uldon of Garawe and Lady Rugeny's maid, Nimanna of Kedel share this room.

Nimanna (35) has been Lady Rugeny's maid for 20 years. She came to Gemela after the marriage of her lady to Sir Arino.

Uldon (15) is the second son of Jasmaen of Garawe, a knight-bachelor and companion of Sir Arino. Uldon is ashamed of sharing the room with Nimanna, but having asked his master, Sir Arino answered that the presence of a woman would tell him courtly manners the best way.

The Foresters

SABEL OF USEAM is a fervid young brunette of 22 and Sir Arino's present mistress. She is a skilled hunter with the javelin and the short-bow, and has Gozydan origins. Her ruthlessness and ambitions for power make her unpopular with almost everyone, but have earned her the favours of Sir Arino. She usually stays with Sir Arino.

WALERN OF DORO is a quit, experienced tracker and hunter of 42 years and is usually the second forester staying with Sir Arino. He strongly dislikes Sabel and Galed, but is wise enough to conceal his emotions.

WERYCK OF SAMEK is the third born son of a knight in Perishire. He became a mercenary and joined the Order of the Chequered Shield for almost 10 years. During an errand to Ibonost, he came to the attention of Sir Arino, who offered him the office of a forester. Weryk accenpted and quit his service with the fighting order. Today he is 45 years old, and though he is not a skilled huntsman, he is an excellent figther and inquisitor. He often leads the patrols through the forest. He has few problems with Galed's actions, as long as he finds the victims guilty. On the other side, as a former soldier he does not tolerate Galed's lack of self control.

GALED OF CALENIR is the 33 year old son of a yeoman. His strength and dexterity earned him the respect of the local lord who trained and employed him as a mercenary. After a short time, Galed's was discharged due to his violent temper, and he travelled to Dyrisa, where he backed Sir Arino during a rough brawl in a tavern. Sir Arino soon made him one of his foresters. Galed is known for the brutal treatment of any offenders of forest law. Usually he hangs poachers himself, but not without prior severe beating.

JANKEZ OF ILKREZ is a halfblooded Gozyda of 44 years. He lives in Mimealen Lodge, a hunting lodge. Being the oldest son of his clan's chieftain, he once saved Janna Dugus, the young spouse of a Thardic trapper who was found within the clan's territory and was ritually sacrificed by his clan from a similar fate. Janna stayed with Jankez for several years, giving birth to a son. Sir Arino discovered the couple and the woman charmed him to allow them to live at one of his hunting lodges. Sir Arino finally made Jankez a forester when he recognized his skills. He regularly sent useful items, food and some silver to Jankez, but kept most of the forester's wage (96d per month). When the boy was 12, Janna died from traumatic fever after receiving severe wounds defending her son against a pack of wolfs in a hard winter, while Jankez was hunting. Jankez has contacts with the Gozyda, but tries to evade his relatives.

LEBOL OF ILKREZ is Jankez' 21 year old son. He usually stays with his father. When he found out, that Sir Arino keeps most of the wage for him and his father, he became enraged, but his father is not interested in silver and has ordered his son to keep silent.

LASWEG OF DOLAIDIN is Sir Arino's vivid kennelboy. He is 16 years old, being the youngest son of Medot of Dolaidin [89]. He lives with Jadost the falconer at Mimea Lodge, Sir Arino's favourite hunting lodge in Mimean Forest.

JADOST OF ERUTE is a bad-tempered brutish young man of 27 years and Sir Arino's Falconer. He resides and maintains Mimea Lodge, at the westernmost rim of Mimea forest, near to the border to Teba hundred, where he trains the warden's three falcons. He has excellent sense of hearing and dislikes any noise, as the kennelboy's babbling or the barking of the hounds. For the latter, disturbing Jadost's peace easily result in severe beatings.

Characters

Warden of the Forest *Sir Arino of Delourne (m)*

HGT 70" WGT 178lbs FRM HEAVY
CMX MEDIUM EYES GRAY HAIR BLACK

BIRTH 04/04/675 (AHNU/FENIRI)

STR 16 INT 12 EYE 14
END 17 AUR 15 HRG 14
DEX 16 WIL 16 SML 13
AGL 13 MOR 09 TOU 14
SPD 14 COM 10 VOI 16

Religion: Larani (21 PP)
Allergy: Flax [06]

Condition	80	Riding	75
Dodge	65	Knightshield	52
Initiative	76	Broadsword	74
Mobility	70	Spear	88
Unarmed	45	Morningstar	58
Awareness	52	Stealth	52
Intrigue	62	Survival	68
Ritual	15	Physician	23
Hârníc	85	Cartography	52
Lakise/sc	83	Lyre	24
Rhetoric	65	Heraldry	60
Oratory	56		

Waregeld of Delourne (m)

HGT 69" WGT 157lbs FRM AVERAGE
CMX DARK EYES BROWN HAIR BROWN

BIRTH 04/02/678 (ARA.-ULA.)

STR 14 INT 13 EYE 14
END 12 AUR 12 HRG 13
DEX 14 WIL 14 SML 13
AGL 12 MOR 10 TOU 13
SPD 13 COM 14 VOI 15

Religion: Larani (18 PP)
Crippled Limb (right arm)

Condition	70	Broadsword	84
Dodge	60	Buckler	75
Initiative	65	Taburi	92
Mobility	65	Stealth	73
Unarmed	45	Throwing	64
Awareness	52	Riding	47
Intrigue	79		
Ritual	14	Heraldry	43
Hârníc	74	Singing	65
Lakise/sc	87	Rhetoric	42

Lady *Rugeny of Lenater (f)*

HGT 69" WGT 141lbs FRM LIGHT
CMX DARK EYES BROWN HAIR BLACK

BIRTH 07/03/683 (FENIRI)

STR 09 INT 15 EYE 13
END 10 AUR 15 HRG 15
DEX 12 WIL 13 SML 12
AGL 14 MOR 14 TOU 14
SPD 11 COM 12 VOI 15

Religion: Larani (15 PP)

Equiphobia [07]

Condition	60	Riding	66
Dodge	70	Dagger	42
Initiative	60	Flute	57
Mobility	55	Singing	52
Unarmed	36	Singing	52
Awareness	52	Heraldry	36
Intrigue	62	Singing	52
Ritual	24	Physician	14
Hârníc	84	Textilecraft	61

Chaplain/Matakea *Tidezais of Fathiel (m)*

HGT 61" WGT 140lbs FRM AVERAGE
CMX MEDIUM EYES GREY HAIR BROWN

BIRTH 28/12/699 (LADO)

STR 11 INT 14 EYE 14
END 12 AUR 17 HRG 15
DEX 16 WIL 12 SML 17
AGL 14 MOR 13 TOU 14
SPD 15 COM 16 VOI 13

Religion: Larani (10 PP)
Double Jointed (arms and legs)
Gamblemania [10]

Condition	60	Knightshield	45
Dodge	70	Broadsword	39
Initiative	69	Mace	56
Mobility	75	Oratory	28
Unarmed	48	Rhetoric	39
Awareness	84	Cookery	64
Intrigue	42	Herblore	15
Ritual	51	Heraldry	34
Hârníc	63	Mathematics	32
Lakise/sc	83	Khruni/sc	83
Emela	43	Legerdemain	63
Telekinesis	15	Mental Bolt	15

Lady *Sanedroel of Delourne (f)*

HGT 69" WGT 141lbs FRM LIGHT
CMX MEDIUM EYES BROWN HAIR BLONDE

BIRTH 26/04/671 (AHNU)

STR 15 INT 12 EYE 15
END 13 AUR 14 HRG 09
DEX 15 WIL 15 SML 12
AGL 17 MOR 15 TOU 11
SPD 13 COM 14 VOI 12

Religion: Larani (21 PP)
Double Jointed (legs)

Condition	75	Knife	45
Dodge	85	Folklore	67
Initiative	73	Rhetoric	39
Mobility	65	Oratory	26
Unarmed	48	Heraldry	28
Awareness	54	Singing	33
Intrigue	45	Textilecraft	56
Ritual	12		
Hârníc	84		

Chamberlain *Erasdan of Kaehte (m)*

HGT 67" WGT 164lbs FRM HEAVY
CMX FAIR EYES BLUE HAIR BROWN

BIRTH 07/01/665 (ULANDUS)

STR 15 INT 16 EYE 14
END 13 AUR 15 HRG 14
DEX 14 WIL 13 SML 13
AGL 11 MOR 12 TOU 14
SPD 11 COM 13 VOI 13

Religion: Peoni (19 PP)

Condition	70	Mathematics	42
Dodge	55	Agriculture	67
Initiative	62	Housekeeping	76
Mobility	55	Brewing	54
Unarmed	65	Cookery	61
Awareness	76	Folklore	58
Intrigue	64	Rhetoric	41
Ritual	14	Oratory	61
Hârníc	64		

Lady in waiting
Lady Pelenal of Lenater (f)

HGT 70" WGT 130lbs FRM SCANT
CMX DARK EYES BROWN HAIR BROWN

BIRTH 03/09/704 (TARAEI-TAI)

STR 16 INT 15 EYE 11
END 14 AUR 15 HRG 10
DEX 14 WIL 14 SML 14
AGL 12 MOR 11 TOU 14
SPD 14 COM 13 VOI 17

Religion: Peoni (15 PP)

Condition 70 Riding 49
Dodge 60 Knife 40
Initiative 68 Singing 63
Mobility 70 Heraldry 56
Unarmed 42 Textilecraft 52
Awareness 56 Jewelcraft 28
Intrigue 51 Physician 15
Ritual 17
Hârníc 85

Forester
Sabel of Useam (f)

HGT 73" WGT 158lbs FRM LIGHT
CMX MEDIUM EYES BLUE HAIR WHITE

BIRTH 26/11/698 (MASARA)

STR 11 INT 12 EYE 13
END 15 AUR 13 HRG 15
DEX 16 WIL 14 SML 14
AGL 15 MOR 07 TOU 10
SPD 11 COM 17 VOI 15

Religion: Oyinath (19 PP)

Birthmarks

Nyctophobia [07]

Condition 75 Javelin 87
Dodge 75 Roundshield 65
Initiative 81 Dagger 62
Mobility 65 Falchion 64
Unarmed 67 Longbow 74
Awareness 72 Stealth 52
Intrigue 59 Tracking 56
Ritual 14 Survival 62
Hârníc 83 Foraging 39
Gozyda 63 Weatherlore 39
Climbing 75 Fletching 34
Horn 37

Master Clothier
Balegad of Jawold (m)

HGT 69" WGT 157lbs FRM SCANT
CMX MEDIUM EYES BLUE HAIR BROWN

BIRTH 07/01/671 (ULANDUS)

STR 13 INT 12 EYE 14
END 14 AUR 12 HRG 09
DEX 14 WIL 14 SML 12
AGL 14 MOR 09 TOU 18
SPD 10 COM 11 VOI 16

Religion: Halea (15 PP)

Drug Addiction: Fanosel [12]

Condition 60 Roundshield 60
Dodge 70 Dagger 60
Initiative 66 Spear 56
Mobility 50 Glaive-Bill 42
Unarmed 48 Textilecraft 74
Awareness 48 Hideworking 58
Intrigue 39 Jewelcraft 33
Ritual 15
Hârníc 73

Master Ostler
Balegad of Jawold (m)

HGT 70" WGT 178lbs FRM HEAVY
CMX MEDIUM EYES BROWN HAIR BLACK

BIRTH 24/02/692 (ARALIUS)

STR 15 INT 12 EYE 16
END 16 AUR 14 HRG 11
DEX 12 WIL 13 SML 11
AGL 14 MOR 13 TOU 11
SPD 12 COM 13 VOI 12

Religion: Peoni (14 PP)

Acrophobia [07]

Condition 75 Roundshield 52
Dodge 70 Dagger 48
Initiative 67 Spear 56
Mobility 60 Glaive-Bill 42
Unarmed 42 Rhetoric 46
Awareness 52 Horsecraft 86
Intrigue 39 Riding 78
Ritual 12 Hideworking 26
Hârníc 73

Chef (Cook)
Hismien of Fathiel (f)

HGT 65" WGT 141lbs FRM AVERAGE
CMX DARK EYES BLUE HAIR BLONDE

BIRTH 21/01/682 (ULANDUS)

STR 14 INT 15 EYE 11
END 14 AUR 15 HRG 14
DEX 13 WIL 13 SML 11
AGL 15 MOR 14 TOU 13
SPD 11 COM 14 VOI 11

Religion: Peoni (16 PP)

Pyromania [08], Phenophobia [08]

Condition 70 Roundshield 56
Dodge 75 Dagger 52
Initiative 66 Rhetoric 39
Mobility 55 Oratory 26
Unarmed 48 Housekeeping 78
Awareness 48 Cookery 89
Intrigue 42 Herblore 32
Ritual 12 Agriculture 32
Hârníc 64 Brewing 22

Yeoman (Medium Foot)
Dermier of Nirendel (m)

HGT 71" WGT 167lbs FRM AVERAGE
CMX MEDIUM EYES BROWN HAIR BROWN

BIRTH 23/06/671 (NADAI)

STR 13 INT 14 EYE 13
END 14 AUR 11 HRG 13
DEX 12 WIL 10 SML 14
AGL 13 MOR 11 TOU 12
SPD 10 COM 18 VOI 11

Religion: Larani (24 PP)

Sterile

Condition 55 Roundshield 68
Dodge 65 Spear 69
Initiative 56 Dagger 53
Mobility 50 Shortsword 72
Unarmed 64 Foraging 42
Awareness 52 Survival 48
Intrigue 36 Heraldry 24
Ritual 12 Physician 19
Hârníc 61 Agriculture 73

Yeoman (Longbow) Uvinfus of Kaehnte (m)

HGT 69" WGT 242lbs FRM HEAVY
CMX FAIR EYES GREY HAIR BROWN

BIRTH 19/01/679 (ULANDUS)

STR 15 INT 13 EYE 18
END 16 AUR 11 HRG 14
DEX 14 WIL 15 SML 18
AGL 12 MOR 10 TOU 13
SPD 11 COM 12 VOI 16

Religion: Peoni (20 PP)

Obesity

Sonambulism [08]

Condition	75	Roundshield	46
Dodge	60	Spear	47
Initiative	68	Longbow	79
Mobility	55	Dagger	48
Unarmed	48	Agriculture	51
Awareness	88	Sheepcraft	67
Intrigue	39	Survival	48
Ritual	15	Weatherlore	34
Hârníc	64	Physician	13

Master Metalsmith Evebeer of Modaril (m)

HGT 61" WGT 140lbs FRM HEAVY
CMX FAIR EYES BROWN HAIR BLONDE

BIRTH 07/06/677 (AGRAZHAR)

STR 12 INT 12 EYE 13
END 12 AUR 14 HRG 14
DEX 13 WIL 10 SML 12
AGL 11 MOR 13 TOU 15
SPD 16 COM 12 VOI 18

Religion: Larani (23 PP)

Parasites

Condition	55	Roundshield	49
Dodge	55	Dagger	56
Initiative	62	Glaive-Bill	63
Mobility	80	Mineralogy	39
Unarmed	36	Metalcraft	87
Awareness	52	Weaponcraft	54
Intrigue	36	Fletching	32
Ritual	16	Singing	71
Hârníc	71	Rhetoric	43

Master Hideworker Mavel of Calenir (m)

HGT 71" WGT 167lbs FRM AVERAGE
CMX DARK EYES BROWN HAIR BROWN

BIRTH 14/07/684 (HIRIN)

STR 13 INT 13 EYE 14
END 11 AUR 17 HRG 11
DEX 15 WIL 12 SML 12
AGL 12 MOR 08 TOU 12
SPD 11 COM 18 VOI 13

Religion: Peoni (07 PP)

Condition	60	Roundshield	59
Dodge	60	Glaive-Bill	47
Initiative	61	Shortsword	64
Mobility	55	Rhetoric	46
Unarmed	39	Hideworking	82
Awareness	56	Textilecraft	28
Intrigue	47	Alchemy	14
Ritual	13		
Hârníc	72	Pyrokinesis	15

MS Charcoaler/Woodward Erasdan of Lamorel (m)

HGT 67" WGT 164lbs FRM HEAVY
CMX MEDIUM EYES GREY HAIR BROWN

BIRTH 30/12/686 (LADO)

STR 17 INT 17 EYE 14
END 10 AUR 13 HRG 14
DEX 13 WIL 16 SML 13
AGL 14 MOR 16 TOU 12
SPD 10 COM 14 VOI 12

Religion: Peoni (23 PP)

Condition	60	Roundshield	60
Dodge	70	Dagger	52
Initiative	63	Spear	56
Mobility	50	Timbercraft	75
Unarmed	51	Carpentry	58
Awareness	56	Alchemy	39
Intrigue	45	Metalcraft	28
Ritual	14	Foraging	39
Hârníc	76	Survival	68

Farmer/Poacher Kheeaard of Calenir (m)

HGT 60" WGT 124lbs FRM AVERAGE
CMX MEDIUM EYES BROWN HAIR BLONDE

BIRTH 16/09/686 (TAI)

STR 13 INT 13 EYE 12
END 14 AUR 12 HRG 13
DEX 12 WIL 12 SML 13
AGL 15 MOR 09 TOU 12
SPD 12 COM 12 VOI 11

Religion: Peoni (15 PP)

Scars (left leg)

Condition	85	Javelin	87
Dodge	86	Knife	68
Initiative	79	Shortbow	73
Mobility	78	Fletching	38
Unarmed	48	Survival	72
Awareness	82	Sheepcraft	52
Intrigue	39	Cattlecraft	59
Ritual	12	Rabbitcraft	26
Hârníc	63	Agriculture	82
Climbing	72	Jumping	79
Stealth	85	Throwing	68

Villein/Herder Inmirt of Sanoan (m)

HGT 69" WGT 157lbs FRM AVERAGE
CMX MEDIUM EYES GREY HAIR BLONDE

BIRTH 28/06/694 (NADAI)

STR 19 INT 13 EYE 13
END 15 AUR 14 HRG 13
DEX 13 WIL 18 SML 15
AGL 14 MOR 12 TOU 15
SPD 14 COM 18 VOI 16

Religion: Peoni (26 PP)

Allergy; strawberries [09]

Demophobia [10]

Condition	90	Spear	74
Dodge	70	Knife	72
Initiative	74	Throwing	74
Mobility	82	Sling	87
Unarmed	45	Lovecraft	67
Awareness	76	Agriculture	56
Intrigue	45	Pigcraft	64
Ritual	15	Goatcraft	82
Hârníc	66	Sheepcraft	89
Survival	67	Jumping	92

Villein/Reeve
Amik of Edomil (m)

HGT 66" WGT 174lbs FRM MASSIVE
CMX DARK EYES BROWN HAIR BLACK

BIRTH 27/11/681 (MASARA)

STR 14 INT 11 EYE 14
END 14 AUR 17 HRG 14
DEX 15 WIL 15 SML 14
AGL 10 MOR 09 TOU 13
SPD 16 COM 14 VOI 14

Religion: Peoni (18 PP)

Condition 70 Knife 54
Dodge 50 Roundshield 43
Initiative 70 Glaive-Bill 63
Mobility 80 Agriculture 70
Unarmed 45 Sheepcraft 56
Awareness 56 Rhetoric 39
Intrigue 62 Oratory 26
Ritual 13 *Disembodim.* 16
Hârníc 74 *Hex* 16

Half-Villerin
Nimanna of Edomil (f)

HGT 70" WGT 162lbs FRM AVERAGE
CMX MEDIUM EYES BROWN HAIR BLONDE

BIRTH 02/02/692 (ULA.-ARA.)

STR 15 INT 14 EYE 14
END 16 AUR 13 HRG 11
DEX 14 WIL 16 SML 11
AGL 13 MOR 11 TOU 14
SPD 10 COM 10 VOI 13

Religion: Peoni (13 PP)

Paranoia [14]

Condition 80 Rhetoric 52
Dodge 65 Oratory 63
Initiative 69 Folklore 43
Mobility 50 Agriculture 52
Unarmed 48 Pigcraft 51
Awareness 48 Chickencraft 67
Intrigue 42
Ritual 17
Hârníc 64

Ebasethe
Hismian of Kalendir (f)

HGT 70" WGT 130lbs FRM SCANT
CMX MEDIUM EYES BROWN HAIR BLONDE

BIRTH 18/10/669 (SKORUS)

STR 16 INT 13 EYE 15
END 13 AUR 16 HRG 12
DEX 18 WIL 14 SML 13
AGL 16 MOR 16 TOU 11
SPD 12 COM 14 VOI 13

Religion: Peoni (21 PP)

Genetic Throughback
(abnormal strength)

Condition 65 Alchemy 18
Dodge 80 Herblore 44
Initiative 73 Agriculture 76
Mobility 60 Physician 33
Unarmed 48 Singing 59
Awareness 52 Rhetoric 62
Intrigue 45 Oratory 56
Ritual 63 Emela 32
Hârníc 74 Khruni/sc 82
Prescience 15

Half-Villein/Fisher
Ryif of Eumil (m)

HGT 69" WGT 157lbs FRM AVERAGE
CMX MEDIUM EYES BROWN HAIR BLONDE

BIRTH 12/09/666 (TAI)

STR 15 INT 11 EYE 13
END 15 AUR 15 HRG 15
DEX 18 WIL 10 SML 13
AGL 12 MOR 12 TOU 12
SPD 09 COM 13 VOI 12

Religion: Peoni (21 PP)

Medical
Psyche

Condition 65 Roundshield 52
Dodge 60 Glaive-Bill 71
Initiative 64 Knife 51
Mobility 45 Goosecraft 61
Unarmed 45 Rhetoric 42
Awareness 56 Oratory 46
Intrigue 62 Swimming 46
Ritual 12 Agriculture 65
Hârníc 61 Fishing 72

Villein
Tasnoess of Eumil (f)

HGT 66" WGT 116lbs FRM SCANT
CMX MEDIUM EYES GREY HAIR BLONDE

BIRTH 27/10/693 (SKORUS)

STR 10 INT 15 EYE 11
END 17 AUR 17 HRG 14
DEX 10 WIL 18 SML 12
AGL 12 MOR 10 TOU 13
SPD 15 COM 15 VOI 15

Religion: Peoni (27 PP)

Birthmarks
Yael/Lunaphobia

Condition 95 Stealth 42
Dodge 60 Oratory 30
Initiative 72 Rhetoric 51
Mobility 75 Herblore 39
Unarmed 51 Alchemy 19
Awareness 48 Agriculture 75
Intrigue 54 Goosecraft 49
Ritual 15 Cookery 63
Hârníc 77 Foraging 45
Disembodiment 17
Clairvoyance 17

Cottar/Beadle
Satima of Dolain (f)

HGT 66" WGT 174lbs FRM MASSIVE
CMX MEDIUM EYES GREY HAIR RED

BIRTH 24/05/694 (ANGBERELIUS)

STR 18 INT 14 EYE 14
END 10 AUR 15 HRG 14
DEX 18 WIL 12 SML 13
AGL 12 MOR 12 TOU 17
SPD 15 COM 14 VOI 15

Religion: Peoni (16 PP)

Left-Handed

Condition 53 Club 72
Dodge 71 Dagger 61
Initiative 67 Javelin 66
Mobility 75 Roundshiled 68
Unarmed 76 Rhetoric 42
Awareness 76 Oratory 28
Intrigue 69 Cattlecraft 63
Ritual 15 Dogcraft 43
Hârníc 63 Agriculture 56

Manor Data Tables

MANOR INFORMATION

GENERAL DATA

Manor name	Gemela
Held by	Clan Delourne
Liege	Sheriff of Daen
Hundred	Mirwyn
Shire	Daenshire
Country	Kingdom of Kanday

Topography	flat Meadows
------------	--------------

ACREAGE	ACRES	%
Gross Acres	1920	100.0%
Woods	883	46.0%
Cleared	1037	54.0%
Tenant	730	38.0%
Demesne	307	16.0%
Waste (part of demesne)	10	0.5%

HOUSEHOLDS	#	%
Serf	20	66.7%
Farmer	2	6.7%
Craftsman	5	16.7%
Yeoman	2	6.7%
Priest	1	3.3%
Slave	0	0
TOTAL	30	

FIEF DATA

Total Population	168
Fief Income	78'900 d
Lord's Privy Purse	-1'004 d
Lifestyle	Normal

Land Quality	0.94
Fief Index	1.00
Trade Index	1.10

LABOR	DAYS
Labor pool	14'500 days
Labor obligation	1'324 days
Labor Priests	0 days
Labor required(total)	13'387 days
Labor required(demesne)	2'338 days
Labor shortfall	1'014 days

MANOR BUDGET

Land Quality	0.94
Fief Index	1.00
Climate HR-Modifier	+05
Weather Index	1.00
Trade Index	1.10

FIEF BUDGET		ACRES	LABOR	KIND
Woods		883	1.00	
Worked Woods	42.76%	821	2463	13'891.3 d
Crops	0.53	546	3167	27'047.7 d
Pasture	0.46	481	4958	40'590.5 d
Waste		10		
TOTAL HARVEST			10587	81'530 d
Seed Purchased		0	0.90	
- stored		0		0.0 d
Winter Feed		0	0.90	
- stored		0		0.0 d
Fief Maintenance		90%	2799.9	-5'599.8 d
Assart	5%	45		
- by Timberwrigth (w stumps)		45		2'970.0 d
- by Timberwright (w/o stumps)		0	0	0.0 d
- by Peasantry		0	0	0.0 d
- by Peasantry (clear new only)		0	0	
FIEF INCOME			13387	78'900 d

LORD'S BUDGET			KIND
Demesne income	297		22'597.1 d
Tenant Rents & Fees			4'746.0 d
Glebe Revenue	50		3'325.0 d
Taxes & Tolls	7		1'848.0 d
Amercements	7	1.00	1'050.0 d
Apanages from Offices			9'792.0 d
Feudal Income			4'800.0 d
Other Income			25'000.0 d
TOTAL INCOME			73'158 d
Household			38'464.0 d
Feudal Payments		VM	6'960.0 d
Tithe		9.84%	7'200.0 d
Labor Hired		1.00	2'338.4 d
Political Expenses		10.00	19'200.0 d
TOTAL EXPENSES			74'162 d

LIFESTYLE	Normal	£ 309
-----------	--------	-------

CROPS AND LIVESTOCK

CROP TYPE	MIX	RS	HR	YIELD	ACRES	LABOR	KIND
Rye	10%	1.00	+15	42.3 d	54.6	273	2'309.6 d
Barley	50%	1.00	+25	45.1 d	273.0	1638	12'317.8 d
Oats	0%	1.00	+20	39.5 d	0.0	0	0.0 d
Hay	20%	1.00	+25	37.6 d	109.2	546	4'105.9 d
Vegetables	0%	1.00	+05	75.2 d	0.0	0	0.0 d
Flax	0%	1.00	-05	62.0 d	0.0	0	0.0 d
Wheat	10%	1.00	-15	67.7 d	54.6	328	3'695.3 d
Fruit	10%	1.00	-25	84.6 d	54.6	382	4'619.2 d
TOTAL/AVG	1	1.00		49.5 d	8.5 d	3167	27'047.7 d

LIVESTOCK	MIX	HS	HR	YIELD	ACRES	LABOR	KIND
Oxen	20%	1.00	0	122.2 d	94.8	805.8	5'792.3 d
Cows	10%	1.00	- 5	176.7 d	47.4	474	4'188.3 d
Goats	30%	1.00	+10	37.6 d	142.2	1422	10'693.4 d
Sheep	30%	1.00	- 10	31.0 d	142.2	1279.8	13'233.1 d
Swine	10%	1.00	+5	14.1 d	47.4	948	6'683.4 d
Horses		1.00	+5	0.0 d	7.0	28	0.0 d
TOTAL/AVG	1	1.00		84.4 d	8.2 d	4957.6	40'590.5 d

HEAD COUNT	HEAD SUM	WIN
Oxen	47	47
Cows	24	12
Goats	284	95
Sheep	427	171
Swine	474	47
Horses	7	7
TOTAL	1263	379

WEATHER TABLE	
Kelen	1.00
Nolus	1.00
Larane	1.00
Agrazhar	1.00
Azura	1.00

VILLAGE CENSUS

ID	TENANT	C	O	NAME	CLAN	HD ADULT		CHILDREN				ACRES			KIND				
						SIZE	M	F	8-12	(f)	0-7	(f)	ML	SERF	FREE	LABOR	RENT	FEES	LIC.
65	Manorhouse					0									0	0 d	0 d		
66	Half-Villein	S		Eveheel	Dolaidin	4	1	-	-	1	2	-	100	17		68	60 d	23 d	
67	Villein	S		Tusnoess	Edomil	3	-	1	1	-	1	-	95	33		132	60 d	39 d	
68	Woodcrafter	C		Tidezais	Fathiel	7	1	2	-	1	2	1	90		10	0	120 d	16 d	120 d
69	Farmer	F		Ilher	Kahte	6	2	-	2	1	1	-	60		50	0	360 d	56 d	
70	Villein	S		Rybeain	Revtel	8	2	2	-	2	-	2	95	34		136	60 d	40 d	
71	Yeoman (MF)	Y		Dermier	Nirendel	5	2	1	-	2	-	-	40		40	0	100 d	46 d	
72	Villein	S	R	Amiik	Edomil	5	2	-	-	-	3	-	50	35		0	60 d	41 d	
73	Metalsmith	C		Evebeer	Modaril	4	1	2	-	-	-	1	85		25	0	210 d	31 d	144 d
74	Villein	S		Endezon	Erute	4	1	2	-	-	1	-	70	22		88	60 d	28 d	
75	Hideworker	C		Mavel	Calenir	3	1	-	1	-	1	-	90		10	0	120 d	16 d	144 d
76	Miller	C		Kalifus	Amlain	6	3	-	-	1	1	1	65		30	0	240 d	36 d	240 d
77	Half-Villein	S		Inatte	Eumil	3	1	1	1	-	-	-	95	14		56	60 d	20 d	
78	Charcoaler	C	W	Erasdan	Lamorel	3	2	1	-	-	-	-	80		25	0	210 d	31 d	180 d
79	Cottar	S		Diehfam	Eumil	4	1	-	1	-	1	1	40	5		20	60 d	11 d	
80	Yeoman (LB)	Y		Uvinfus	Kahte	4	1	1	-	1	1	-	100		42	0	102 d	48 d	
81	Villein	S	H	Inmirt	Sanoan	4	1	1	-	1	1	-	70	35		0	60 d	41 d	
82	Cottar/Fisher	S		Evemaol	Sanoan	7	2	2	1	1	1	-	75	3		12	60 d	9 d	36 d
83	Half-Villein	S		Ryvain	Eumil	4	1	-	1	1	1	-	70	17		68	60 d	23 d	
84	Half-Villein	S		Tiehard	Edomil	3	3	-	-	-	-	-	55	16		64	60 d	22 d	
85	Shrine of Peoni	P		Hismien	Kalendir	4	-	2	1	-	-	1	65		50	0	0 d	0 d	
86	Half-Villein	S		Esana	Edomil	4	-	-	1	1	1	1	80	18		72	60 d	24 d	
87	Villein	S		Oiuon	Erute	7	3	1	2	-	1	-	105	22		88	60 d	28 d	
88	Half-Villein/Fisher	S		Ryif	Eumil	5	2	1	-	1	-	1	60	12		48	60 d	18 d	36 d
89	Half-Villein	S		Medot	Dolaidin	8	5	2	-	-	-	1	60	14		56	60 d	20 d	
90	Farmer	F		Kheeaard	Calenir	4	1	1	2	-	-	-	70		45	0	330 d	51 d	
91	Villein	S		Rieaer	Revtel	6	2	-	2	-	2	-	70	33		132	60 d	39 d	
92	Half-Villein	S		Nimanna	Edomil	4	-	1	1	-	1	1	75	18		72	60 d	24 d	
93	Villein	S		Diron	Revtel	4	1	1	-	-	1	1	95	34		136	60 d	40 d	
94	Cottar	S	B	Satima	Dolaidin	2	-	1	-	-	-	1	100	2		0	60 d	8 d	
95	Half-Villein	S		Linmita	Erute	5	-	2	1	1	1	-	90	19		76	60 d	25 d	

VASSAL FIEFS

FIEF NAME	HELD BY	TYPE	LQ	FI	ACRES	INCOME	OWES
(various Wooddwellers)			1.00	1.00	400	14.400 d	4.800 d
TOTAL					400		4.800 d

The listed "fiefs" are villages within Mimean Forest that are pressed by the foresters.

LORD'S HOUSEHOLD

NAME	OCCUPATION	ML	EACH	#	TOTAL	LOY.
Arino of Delourne (m45)	Fleholder	60	3'000 d	1	3'000 d	100
Rugeny of Lenater (f37)	Spouse	85	2'000 d	1	2'000 d	91
Larion of Delourne (m11)	Offspring					85
Hedolm of Delourne (m8), Dolitheia of Delourne (f5)		90	1'000 d	3	3'000 d	-
Lady Sanedroel of Delourne (sister, f49)						87
Waregeld of Delourne (crippled brother, m42)	Relatives	75	1'500 d	3	4'500 d	20
Lady Pelenal of Lenater (niece, f16)	Squire	85	1'200 d	1	1'200 d	75
Uldon of Garawe (m15)	Bailiff		2'000 d		0 d	
	Steward		2'000 d		0 d	
Erasdan of Kaehnte (m35)	Chamberlain	95	800 d	1	800 d	71
Hismien of Fathiel (f38)	Cook	85	500 d	1	500 d	69
	Baker		400 d		0 d	
Peonoel of Sanoan (f56)	Alewife	45	400 d	1	400 d	67
	Cellarer		500 d		0 d	
	Gardener		400 d		0 d	
Aldain of Dolaidin (f31)	Nursemaid	55	400 d	1	400 d	67
(m32, m13, f34, f27, f19, m37, m17, f24, f43), Nimanna of Kedel (f35)	Domestics	75	300 d	10	3'000 d	69
Rybeain of Selvon (m49)	Clothier	80	900 d	1	900 d	70
	Harper		600 d		0 d	
	Herald		1'500 d		0 d	
	Litigant		1'100 d		0 d	
	Mason		1'500 d		0 d	
Balegad of Jawold (m28)	Ostler	70	1'300 d	1	1'300 d	64
	Physician		1'200 d		0 d	
Tidezais of Fathiel (m21)	Priest	64	800 d	1	800 d	
	Sage / Tutor		1'200 d		0 d	
	Scribe		800 d		0 d	
	Teamster		900 d		0 d	
	Weaponcrafter		1'800 d		0 d	
	Hideworker		900 d		0 d	
	Metalsmith		1'100 d		0 d	
	Salter		700 d		0 d	
	Timberwright		1'200 d		0 d	
	Woodcrafter		1'000 d		0 d	
	Archbishop		5'000 d		0 d	
	Bishop		3'000 d		0 d	
	High Priest		1'500 d		0 d	
	Priest		800 d		0 d	
	Acolyte		400 d		0 d	
Werdel of Samek (m34)	Man-at-arms/ LF Sergeant-at-arms/ MF Shortbow/ SB	85	576 d	2	1'152 d	64
Nasred of Nirendel (m37)			936 d		0 d	90
			936 d		0 d	
Royal Foresters:						
Walern of Doro (m42)	Longbow/ LB Huntsman/ LH Medium Horse/ MH Household Knight/ HH					50
Weryck of Samek (m45)						20
Galed of Calenir (m33)						55
Jankez of Ilkrez (m44)*						50
Lebol of Ilkrez (m21)*						85
Sabel of Useam (f22)		80	1'152 d	6	6'912 d	68
			2'016 d		0 d	
			3'200 d		0 d	
			4'608 d		0 d	
Lasweg of Dolaidin (m16)*	Kennels	64	600 d	1	600 d	58
Jadost of Erute (m27)*	Falconry	78	800 d	1	800 d	68
	Palfreys		900 d	6	5'400 d	
	Warhorses		1'800 d	1	1'800 d	
TOTAL:				34	38'464 d	

*: Permanent residents of one of the hunting lodges..