

LOCATION: Dunzael Hundred,
Daenshire,
Kingdom of Kanday

STATUS: Royal Keep
Liege: King Andasin IV.

GOVERNMENT: Sir Crasel Avandar,
Sheriff of Daen

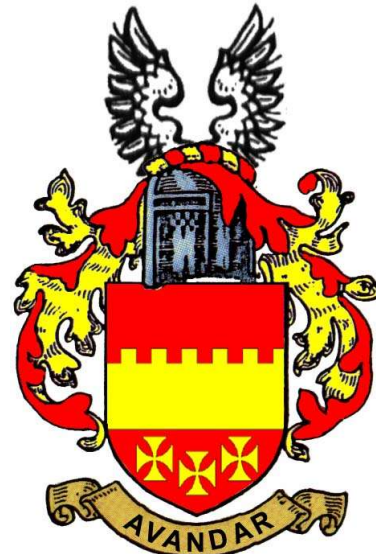
POPULATION: 495 persons (74 households)

History

Edino was built in 403 TR by Queen Elana of Aleathia to protect the strategically important crossing of the Edin River and to guard the northern approach to Aleathia from the expanding Corani Empire. Twenty years after Edino was completed the Aleathans built Caer Pinide. This restricted the Corani Empires expansion south of the Eryn River to what is now Kandis Hundred. The Aleathian monarchs also used Edino to tax vessels travelling between Aleath and Dyrisa and forcing the Empire to expand its ports at the mouth of the Thard and on the West coast of Hârn.

In 443 TR King Xuaka of Aleath captured Dyrisa and Heroth. The Corani Empire responded by appointing a new Emperor, Mejenes, who counter-attacked and, after four years, had Xuaka penned inside the walls of Aleath. The peace terms resulted in the return to pre-war boundaries until Xuakas' death, at which time (453 TR) Aleathia became part of the Corani Empire. Edino became the residence of one of the deputy governors of Aleathia Province.

The next 20 years saw a huge expansion in the Empire. During the expansion large areas of forest were cleared and several new settlements were built on the northern bank of the Eryn River. Among these was Gemela, which was founded in 472 when Adric of Gemel was



ARMS OF CLAN AVANDAR: *"Gules, a fess embattled or, three crosses formy or in base. Crest: Wings argent. Mantlet: Gule and or. Motto: WITH HUMILITY AND GRATITUDE."*

granted permission to build a small man-or. The expansion continued despite Emperor Syluds decision to restrict military spending. A decision which led to the loss of much of the north western part of the empire, but which had little effect on the increasingly prosperous Eryn Valley.

When Emperor Mindrithar took control in 491TR he attempted to reverse the decline of the Empire. He chose not to try to recapture many of the more remote outposts of the Empire, but instead concentrated on the lands south of Coranan. In 493 TR he had Caer Moleryn built, followed four years later by Caer Ibonost. This was the last great castle building era of the Corani Empire. By 500 TR Mineous Trail between Dyrisa and Moleryn, now known as the King's Way, had been blazed and a number of settlements were being built in the area from the Douwa Downs south to the Eryn River.

In 508 TR it was decided to build a second bridge over the Eryn at Edino; and to connect Edino to Moleryn via a new Imperial road. The bridge was begun

in 510 TR and completed in 512 TR. Upon completion of the bridge the paved road north from Gemela towards the other settlements was begun. The bridge consisted of two low stone piers, one on each of the two banks of the river and five bridge piers within the river. The bridge deck was wholly of wood and the bridge itself was only 15 feet above the water level, insufficient to allow for navigation. This was a source of great annoyance to the merchants

in Dyrisa, as it restricted trade to that settlement. The Dyrisans appealed to the Emperor for either: the bridge to be removed, or, for a high arched stone bridge to be provided. Unfortunately, these request coincided with the death of Mindrithar. Emperor Korad did nothing to resolve the situation, other than to halt the Imperial funding for the Edino-Moleryn road. This had the result that traffic over the bridge was minimal and therefore income from tolls was low.

Over the years the bridge, referred to locally as 'Mindrithars Folly' fell into disrepair. When the Corani Empire fell and the Forces of the Theocracy crossed the Eryn in 569 TR, the last Governor of Edino, Eladas of Kand, declared his loyalty to their leader and was allowed to maintain possession of Edino Keep. The Theocrats never trusted Eladas, who, in fact, began to establish a small army of refugees in the Mimea Hills.

Finally, in 575 TR, Eladas of Kand was summoned to Dyrisa to face charges of heresy and treason. His son, Andasin, and his family and followers used the bridge to escape from the Theocrats. Andasin burned the bridge behind him, to prevent pursuit. This action prevented any significant pursuit from Edino and resulted on the Theocrats appointed to Edino having to return to Dyrisa to cross the Eryn in pursuit. The time delay allowed Andasin and his followers to disappear into the Mimean Hills. Eladas of Kand was executed for Heresy and treason at Dyrisa, his family declared outlaws.

When the Theocracy collapsed in 588 TR, Eladas' oldest son and heir Andasin of Kand, born at Edino in 558 TR, struck quickly, seizing Ibonost keep from its Tekhosian governor in the first month of 589 TR. He proclaimed the kingdom of Kanday with himself as king. For the next decade, aided by the chaotic conditions of the Interregnum, he

Credits

Writer & Map Artist

Christian Düntgen (xris@xris.de)

Graphics

Christian Düntgen, Werner Riga

Contributors

Neil Thompson, Werner Riga

Editors

Jeremy Baker, S. Scott Bogdan,
Michael Keena, Markus Mohr, Werner Riga

Copyright Notice

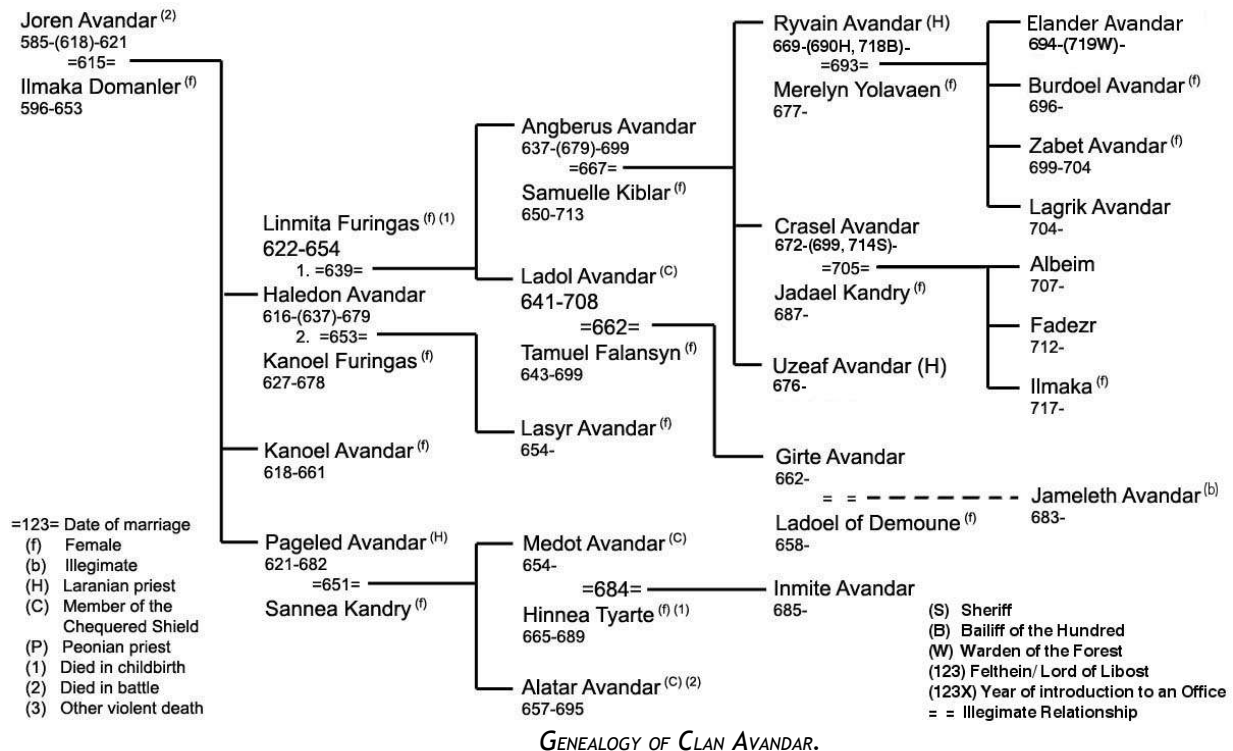
This fanon supplement is a derivative work based upon the original copyright work of N. Robin Crossby. No challenge to such intellectual rights as may pertain is intended or implied. It is intended to be used with the great *HARNWORLD* series published by Kelestia Productions Ltd. and Columbia Games Inc.

© 2002-2010 by C. Düntgen

Manor-Spreadsheets by Jocke Andersson

References

Please visit the websites at
www.lythia.com
www.columbiagames.com
www.kelestia.com



extended his power. In 598 TR, Andasin felt secure enough to attack Edino keep which was held by the vicious warlord Taklar Zedabas. Taklar's well deserved reputation for vicious brutality had won him the sobriquet "The Ogre", and he was considered one of the most skillful military commanders in the area.

Andasin, having lived at Edino, knew its defenses well, and his night assault in small boats across the Eryn River took Taklar by surprise. The battle for control of the keep was bloody and merciless; few of Taklar's men survived. The Ogre of Edino was killed in the attack, cut down on the roof of the keep. Today, folklore and the name of the keep's garrison's favoured tavern still reminds of that event.

Following this triumph Andasin conquered or annexed much of the surrounding area. He was a genius at siege warfare and by 615 TR had isolated his only significant rival, the Morgathian lords of Dyrisa castle.

Meanwhile, Andasin had expanded Edino keep by strengthening its ring wall and erecting a new gatehouse.

Andasin gathered his troops, and in the spring of 620 TR he marched to Dyrisa and besieged it. Dyrisa surrendered three months later, after its overlord was murdered by his followers.

Andasin made Dyrisa his main seat, passing over the command of Edino to a trusted constable, who became the first Sheriff of Daen.

For 20 years western Daenshire was actually the Kingdom of Kanday. Until Ezars War brought in the petty kingdoms to the south (and eventually, most of what is now Perisshire) Edino was a central location in the kingdom. Today, Edinos inhabitants are still aware of this fact, beeing proud nationalists and followers of the House of Kand.

Ruling Clan

"Sir Crasel Avandar is a hardworking and

laconic man of forty eight. Sir Crasel was a model of Laranian chivalry in his youth, distinguishing himself at Durnir and Selvos, and again in the disastrous Kuseme War. The garrison at Edino, an elite force of veteran medium horse, has served under him since 714.” (KANDAY^{2nd} 27)

SIR CRASEL AVANDAR¹ (48) inherited his clan's holding at Libost in 699 TR. His older brother RYVAIN AVANDAR was decided to become a Laranian priest by his father who had sworn to give his first borne to the goddess, and therefore the younger Crasel was raised to inherit the fief. In 693 Matakea Ryvain was seduced by LADY MERELYN YOLAVAEN in a confession cell and caught in the act by a fellow priest. When Merelyn got pregnant, Sir Angberus Avandar was outraged and negotiated the marriage with Lady Merelyn, who was the daughter of a close friend, the Lord of nearby Gibrale. Ryvain was forced to quit his service at Ubar Abbey, officially being sent to be Sir Angberus' chaplain. On the day of the marriage, Sir Angberus confirmed his will for Crasel to become his successor. This was respected by the clan, when he passed on to Dolithor in 699 TR.

Having displayed his competence in Kuseme War, Sir Crasel Avandar was appointed sheriff in 714 TR by the king.

Since he is usually busy at Edino and Dyr-isa, Sir Crasel soon sought for a competent bailiff to help control over his family estate at Libost. Knowing his younger brother Uzeaf in the ranks of the Laranian clergy, Sir Crasel appointed his older brother to be bailiff of Paku. Later, he made Ryvain also Bailiff of Dunzael Hundred, when the former Bailiff died in 718 TR. This arrangement allows Sir Ryvain and his family a life befitting his rank. As both, bailiff of the nerby Paku and Bailiff of the Hundred, Sir Ryvain has a close eye on the actions of the

Miner's Guild at Karada's Placer, a tinmine maintained by the infuential guild near the family estate at Berina Hamlet.

Matakea Ryvain's oldest son ELANDER AVANDAR has been appointed the office of Warden of Raden Forest by the Sheriff of Selion, Jens Dimilaen in 719 TR. The fact, that his uncle Elander is about to foster the construction at Korri for the Rekela of Ternula, who opposes Sheriff Jens Demilaens plans for a Laranian temple at Avertu, may become an interesting obstacle for young Elander.

As his oldest brother, UZAEF AVANDAR was determined to make a clerical career. He joined the Nylen covenant school with 9 years and finished the novitiate in 695 TR. Beeing both, ambitious and disciplined, he was assigned to the duties of the abbey's Obasaran and Suloran. When the position of the Suloran became vacant in 711, Uzaef was chosen due to his high competence ans experience in administration and bookkeeping. Finding further progress blocked by a young Serolan at Nylen Abbey, Uzaef asked his brother for secular support. Crasel spent considerable sums on donations to the construction of the Tashal temple and to the Serekela at Shreve. Since Crasel became Sheriff of Daen, he also courted influential priests from the Serekela's entourage.

In 716 Carlen Milaka, a friend of Uzaef from common novitiate days, was made Rekela of Ternula and began construction of a large cathedral at Korri. Looking for a competent and trustworthy cleric to oversee the cathedral works and control the flow of the immense funds spent on the task, he invited Uzaef to become the Suloran at his dioszesan seat at Korri. Eager to foster his career, Uzeaf immediately accepted the call and moved to Ternula. This annoyed Sir Crasel, who had already invested large sums of silver and political influence

¹Official image: See KANDAY^{2nd} 27.

to built up his brother a career in the Daena church. These investments may have been in vain now. Also, this kind of sudden relocation is quite unusual, and there are rumors at Nylen, that Uzaef may follow some secret mission on behalf of the Serekela or one of his advisors.

SIR YARREN MULEWIS (born in 665) is a tragical character. As his older brother, Antin Mulewis, he is one of Kanday's heroes. As members of the "Forty Thieves", they played a key role in the recapture of Durnir. In 693 the brothers were knighted by the king. But while Antin and his veteran company returned to Shorkyne after Ezar's War, Yarren fell in love with a Kandian noblewoman and stayed.

He soon married **LADY ZABET KIBLAR**, the youngest sister of Sir Crasel's mother Samuelle Kiblar. Many local nobleman supported popular Yarren and so he was promoted Warden of Aleur by the Sheriff in the year of his marriage.

In the sommer of 694, Sir Yarren's life came to a sudden turn, when his wife died in stillbirth of triplets. This event broke Sir Yarren Mulewis. Overwhelmed by grief and sorrow, he left his house at Edino and moved to the Aleathian suburb of Morien. Attempting to forget, he started to frequent the city's taverns to quench his sorrow in strong drinks and distracting company. This attitude is constantly draining his financial ressources. After receiving his apanage, he can be found in good inns standing rounds. When the money is spent, he turns to the low dives, where he can be found drunken and neglected, talking about his "soon return to good old Shorkyne".

Sir Yarren neglects not only himself, but also his duties as the Warden of Aleur. While Sir Yarren appointed some of his new "friends" royal foresters, some



Sir Yarren Mulewis, Warden of Aleur

of his old staff still watch his back. While most of his former noble friends and supporters turned away from Yarren, some still remember his merits and so Sir Mulewis still maintains some powerful contacts to important persons.

That Yarren Malewis is still Warden of Aleur owes to two reasons: First, Aleur Hundred is of almost no importance to the King, the Royal Treasury or anyone important. Second, Sheriff Crasel Avandar loved his young aunt Zabet above all and still does not have the heart to degrade his uncle. Though, he has reduced the Warden's apanage to a minimum. This gives Sir Yarren reason for bad talk about his "thankless nephew" whenever he had one over the eight.

Government

Edino

Edino is governed by the Sheriff of Daen - Sir Crasel Avandar - who resides in the royal keep. Edino is the shire moot of

Daen. Shire moots are held quarterly: on 12th to 15th of Kelen, Agrazhar, Savor, and Morgat. All vassals of the Sheriff have to attend this courts.

The Sheriff employs two scribes and a master litigant to cope with the registration and administration of obligations, taxes, tolls and jurisdiction. The litigant, **RAMAFA OF SARIN**, leads the chancery and copes even with more complicated cases of law.

The craftsmen of Edino form a chapter of the Mangai and elect a spokesman to advice and petition the Sheriff in economic affairs. Their current spokesman is **HEEHFAM OF GAMINNIA** (Edino map key 64).

The Sheriff regularly visits his vassal lords to ensure their loyalty. He is assisted by his steward, **SIR DIDEOL OF KANDRY**, a trusted brother-in-law, who, in turn, controls the Sheriff's bailiffs. The Sheriff can be found at the royal court in Dyrisa or Ibonost, usually twice a month. Both of the King's favourite residences and his favoured hunting preserve - the Mimea Hills - lie within Daenshire.

In the absence of the Sheriff, command is passed to **SIR GIRTE AVANDAR (58)**, a cousin of the Sheriff and his constable.

All free men have to attend militia training, held once a month and conducted by **EVELION OF**

KAEHTE [see Local Map Key 33], a yeoman and former sergeant of the guard.

The Sheriff maintains a guard under the command of the Captain of the Guard, **SIR JAMELETH AVANDAR (37)**, the young son of Sir Girt. The guard is divided into three units:

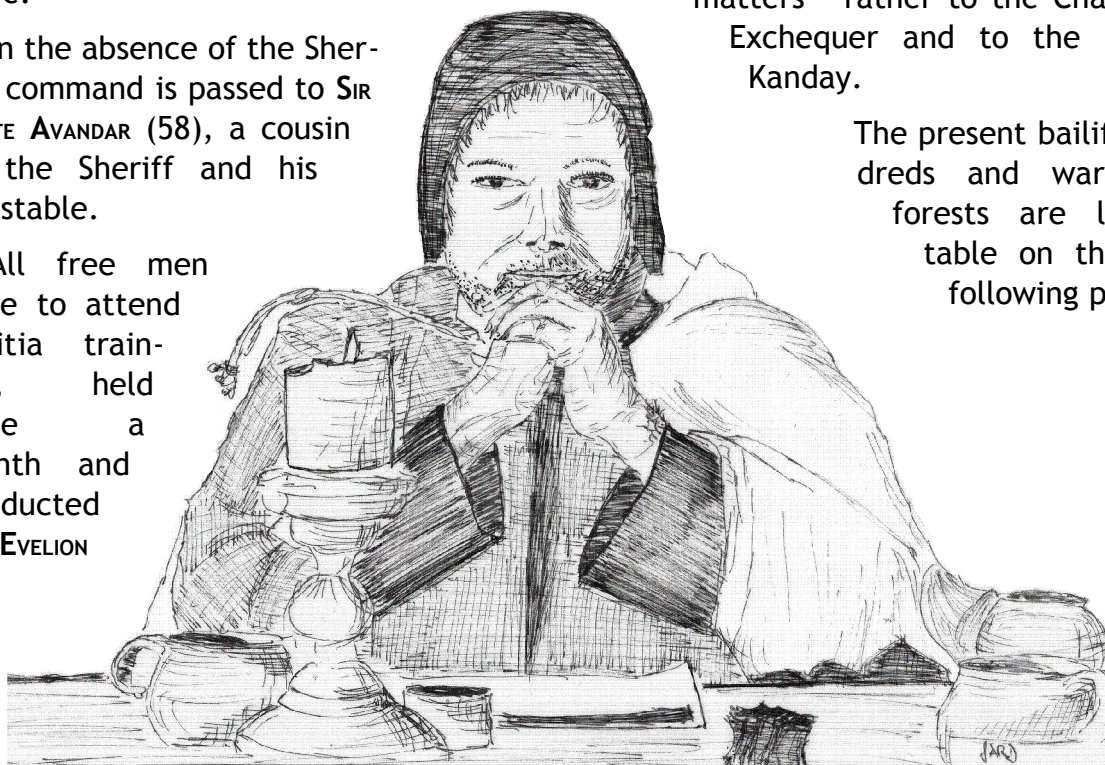
1. 14 Veteran Medium Horse under direct command of the Captain of the Guard (HH);
2. 9 Light Foot under the command of **SERGEANT KAKITEL DAIMION (MF, 41)**;
3. 10 Longbows under the command of **SERGEANT RAMAFAM AFINDIN (LB, 36)**.

At least one company stays at Edino as a garrison of the keep and to collect the toll. No less than five soldiers usually travel with the Sheriff.

Daenshire

The Sheriff appoints and controls the Bailiffs of the Hundreds and the Wardens of the Forests within his shire. He is responsible to the King or - in financial matters - rather to the Chancellor of the Exchequer and to the Chancellor of Kanday.

The present bailiffs of the hundreds and wardens of the forests are listed in the table on the top of the following page.



Sir Girt of Avandar, Constable of Edino

<i>Hundred</i>	<i>Hundred Moot</i>	<i>Holder of Office</i>
Aleur	<i>(forest hundred)</i>	Sir Yarren Mulewis
Dunzael	Dunzael	Sir Ryvain Avandar
Kandis	Jubas	Sir Kubro Garawe
Mimean	<i>(forest hundred)</i>	Sir Arino Delourne
Mineous	<i>(forest hundred)</i>	Sir Dirithon Murel
Mirwyn	Daleton	Sir Allitel Juloraen
Teba	Hostu	Sir Gamaef Demas

Economy

Agriculture, Fishing, Forestry

As in many settlements of the Eryn valley, fruit is cultivated on a large scale. Welcome by-products of this fruit culture are the honey and wax from the bees, necessary to pollinate the trees within the orchards. Oats and rye are raised as the people's main source of nourishment, oats and sweet hay for the horses bred by the ostlers.

Fishing is relative uncommon in Edino, and only one household makes its livelihood mainly by fishing.

Only 10% of the monor are covered with woods. While the craftsmen replace resources like wood for construction and fuel with wood from the opposite bank of the Eryn, most peasants cannot afford this. Hence, felled trees must be carefully replaced with young shoots by the woodward, who also limits and controls the fattening of pigs in the woods. The office of the Woodward if held by the timberwright.

Exported goods: fruit, wool, hay.

Imported goods: vegetable, wood.

Crafts

Approximately 49% of the households are free, 27% are craftsmen. This reflects the great importance of crafts in Edino. As the overview shows, there are 21 trades resident at Edino.

APOTHECARY	[10]
BASKETMAKER ^{u)}	[9]
CHANDLER	[54]
CLOTHIERS	[1a] ^{b)} [50]
INNKEEPERS	[16] [24a]
LITIGANTS	[1a] ^{b)} [17]
LONGSHOREMAN ^{u)}	[2e]
MERCANTYLERS	[6] [64]
METALSMITH	[36]
MILLER	[4]
OSTLERS	[1g] ^{b)} [3] [24b]
PHYSICIAN	[22]
PILOT	[2d]
POTTER	[8]
ROPEMAKER ^{u)}	[73]
SALTER	[63]
SEAMEN'S GUILD	[2a]
TEAMSTER ^{u)}	[48]
TIMBERWRIGHT	[77] [*]
WEAPONCRAFTER	[1c] ^{b)}
WOODCRAFTERS	[49] [75] [*]
TEMPLE OF PEONI	[52]

^{*}: This number does NOT refer to the Local Map, but indicates a building which is off the map.

^{b)}: This is a bonded craftsman.

^{u)}: This craft is not a member of the Mangai.

Exported goods: horses, cloth, cider, beer.

Imported goods: salt, raw metals.

Trade

Traffic

Edino lies on two trade routes: The first is a secondary road from Gute to Dyrisa, that crosses the Edin River at Edino. The route via Edino is longer than the High Street via Pinide, but it may be less expensive, as there is a single royal toll levied at Edino, whilst two tolls are levied on the High Street (at Zenerath and Trakalin).

The second route is by the river. Trade from Aleath to Dyrisa has to pass Edino. All goods have to be landed at Edino Haven - where a bonding tax is levied.

This situation makes Edino the economic centre of Dunzael Hundred, and trade a significant economic factor. Goods traded are mainly tin from Karada's Placer (an important tin mine near Paku); wool and cloth, fruit and cider from the hundred's production; salt and raw metals for the rural day-to-day consumption; rare luxury goods from Aleath heading for Dyrisa or other northern destinations and vice versa.

Imports

Dyes and luxuries are imported by distant trade, as there is no surplus anywhere in Kanday. They are expensive and much sought after. Preserved foods come from the coast via Aleath (salted herring) and Cuton, as there are no local surpluses at Edino. Salt is imported via Aleath or Cuton. Wine and Cider is imported from Northern Kanday, and foreign produce come via Aleath. Chantaer, a peonian nunnery to the south, exports cider and Cantaer, a much favoured apple-brandy. The latter is also traded during the Edino Fair.

Exports

Not surprisingly a settlement on the Eryn River with huge forests on the opposite

bank, Edino market has a surplus of wood and charcoal. Most of the charcoal from Edino (actually produced in Gemela and near Murelno) is transported by river or road to Dyrisa. Some is sold to local smiths and a significant amount goes to the mines at Karada's Placer (for use in the smelting furnaces). Most settlements west of Edino have a demand for Charcoal.

There is a tin mine near Berina, called "Karada's Placer". This is the only local source of metal and the next nearest tin mine is near Cuton so Edino tin travels far.

Most of Kanday has a surplus of wool, and so has Edino. The bulk of the wool is sold on Edino Fair and destined for the export market.

Edino Market

Edino Market is held on Elana Square. It is open on all lesser Sapelah (4th, 12th, 20th, and 28th of all months). In the months of Kelen, Agrazhar, Savor and Morgat, the shire moot is held from 12th to 15th, and the market is open during these days. Most craftsmen from Dunzael Hundred are present with a booth or tent and offer the best of their products to the gathered nobility and to the freemen of Daenshire.

The Edino Fair

From Kelen 12th to Kelen 15th, a regional wool fair is held. In the morning of Kelen 12th, the peonian priests from Edino open the fair with a large mass. For the following three days, the herders from Dunzael sell their wool to mercantylers and clothiers from Aleath, Dyrisa, sometimes even from Coranan. Jugglers and musicians entertain the participants and numerous spectators. On Kelen 15th, the Serolan of Chyndaen Abbey holds a Laranian Soratir for the nobility and afterwards declares the fair closed. While noble attendents of the shire

moot are hosted at the Sherri's Banket on Caer Edino, the commoners end the fair with a large festival.

Taxes

PROPERTY:	6% per annum (residential)
PROPERTY:	4% per annum (business)
HAWKING TAX:	5% of goods value
BONDING TAX:	2% of goods value per month
WHARFAGE:	1d per food per day (half for registered vessels)
REGISTRY:	30d per foot per annum
PILOTAGE:	20d flat fee
MERCHET:	8%
HERIOT:	(best animal of the deceased)
TOLL:	1d per cart/wagon; 2f per beast

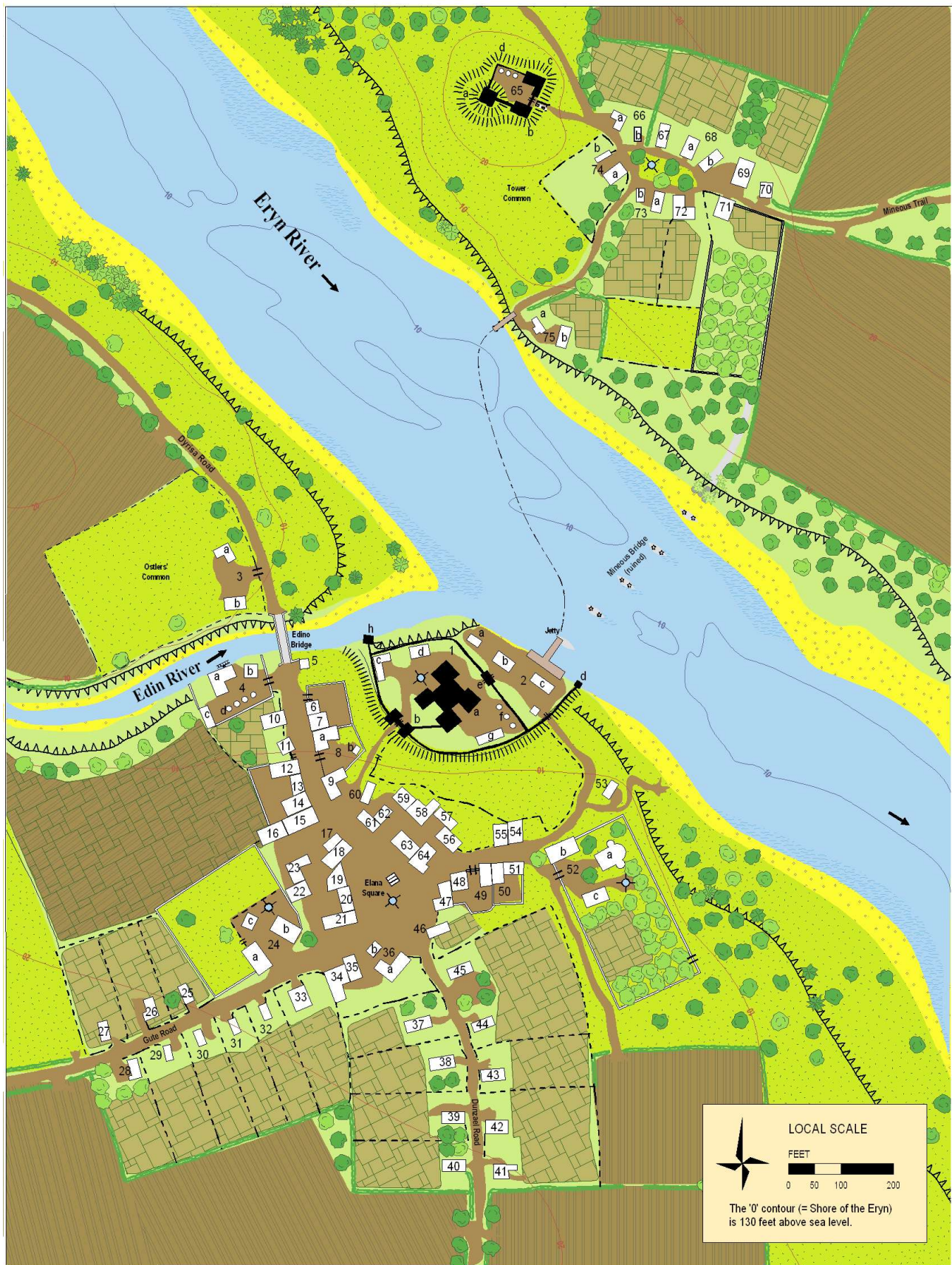
Religion

The worship of Larani and Peoni is encouraged and their churches are tax exempt. The church of Save-K'nor is tolerated. Worship of Halea and Sarajin is discouraged. The worship of Ilvir, Morgath, Agrik and Naveh is prosecuted and punishable by death.

There is a large temple to Peoni [52], that supports a small orphanage. A Laranian chaplain dwells in Caer Edino [1a]. The nearest temple of Larani is at Chyndaen Abbey.

EDINO & GEMELA

COMMON MAP



Map Key/Residents (Edino only)

1

CAER EDINO

The four-storied keep [1a] stands in a bailey enclosed by a 21 foot high wall. The main entrance to the bailey is guarded by a 3-story gatehouse with two flanking towers [1b]. A curtain wall blocks the direct access from the main gate to the entrance of the keep. A three-story gatehouse protects the harbour-gate [1e]. An additional tower [1h] guards the passage of the Edin River. The bailey houses the workshop of a bonded weaponcrafter (Mainot of Sanneth) [1c], barracks for the garrison [1d], and the stable (bonded ostler Zeasri of Tushine) [1g]. Three granaries [1f] hold supplies for the garrison and the fief.

2

EDINO HAVEN

The wooden jetty uses a pier of the ruined Mineous Bridge. A derrick is used to lift heavy loads with winches. The south-eastern tower [2d] on the harbour wall houses the harbourmaster and bears a beacon that is lit during foggy weather.

[2A] SEAMAN'SS' GUILD (HOSTEL) - JOLDEZ OF HALDEF

(Size: 1 Quality: 2 Prices: -)

Joldez is 48 and has a severed left leg. He is a jolly lad and fond of telling sailor'ss' yarn to visitors.

[2B] BONDINGHOUSE

The bondinghouse is guarded by two of the Sheriff'ss' men. The Bondmaster is the Clothier Levur of Daminth [50].

[2C] WAREHOUSE

This warehouse is owned by Heehfam of Gaminnia [64].

[2D] HARBOURMASTER/PILOTS' GUILD -

MASTER PILOT GIUEF OF ANTARIN

(Size: 2 Quality: 1 Prices: *average*)

Giuef (m47) travelled on Orbaalese ships for almost 20 years. When his ship and most of the crew sank during a freak storm off the Kandian coast 12 years ago, he decided to settle down and make a less risky life for himself. His apprentice (m19) rows Giuef's boat and takes care of the beacon. Giuef manoeuvres boats into the haven, collects fees and taxes and maintains the harbour installations.

[2E] LONGSHOREMAN - IEHOT OF REVTEL

(Size: 3 Quality: 2 Prices: *low*)

Iehot is 37. He lives with his son (15) and wife (34), who also work with loading and unloading the boats. His daughter is just 3 years old.

3

OSTLER - INEHAIS OF BANMIN

Size: 5 Quality: 4 Prices: *high*
Inehais (53) and his grown-up sons (27 and 21), successfully breed cold-blooded cart-horses and palfreys. The first are popular with the teamsters of Dunzael and the adjoining hundreds. His wife (45), the younger sons (12 and 9) and his daughters (18 and 14) farm a small plot of land, mainly for hay and oats as fodder for the horses.

4

MILLER - ZEDEER OF ARLIANA

Size: 3 Quality: 4 Prices: *average*

Zedeer maintains a undershot water mill [4a], a baking house [4b] and an malt roast [4c]. The granaries hold enough stock for approximately one year. As there is no miller in Ruta he also mills the grain for the residents of this adjacent manor. He supplies over 100 households. Zedeer is a dreamy man of 53

years and widowed. His oldest son (25, unmarried, but has already received the degree of a master miller) and an apprentice (15) assist him. His other family members consist of two sons (11 and 7) and two daughters (9 and 4).

5 TOLLHOUSE

The tollhouse is manned by a toll collector (one of the Sheriff's scribes) and three of the Sheriff's soldiers day and night. A toll of 1d per cart/wagon and 2f per beast is levied. Residents of Dunzael hundred are exempt. A share of 80% is handed over to the crown, the balance of 20% is kept by the Sheriff.

6 MERCANTYLER - OPVTAN OF ELNARIND

Size: 3 Quality: 2 Prices: *average*

Opvtan (42) mainly deals with metals (especially tin from Karada's Placer) and with wool and cloth produced in Dunzael hundred. His wife (37) and his sister (32) keep the house and care for the daughter (10), while her impatient husband travels on business.

7 HALF-VILLEIN - REVANNA OF ARANMIN

Revanna (27) is a calm, widowed woman with three girls (17, 14 and 9).

8 POTTER - TEDEON OF FUTARRINA

Size: 2 Quality: 1 Prices: *low*

Tedeon (48) and his journeyman (26) operates a kiln near a small clay pit half a league upstream on the Edin River. Building [8a] is his shop, where he sells simple products like pots or cups. [8b] is a heavily locked shed - nobody knows what the easily excitable Tedeon stores here. Tedeon is unmarried and cares for an orphaned nephew (8) since his brother died in 715 TR. Despite his lack of craftsmanship, Tedeon is one of the five members of the Board of Syndics of the Potters' Guild's Daen Chapter. It is no secret that he was elected solely due to practical considerations.

9 BASKET-MAKER - NIMSIDIM OF CAMINIRA

Size: 3 Quality: 4 Prices: *average*

Nimsidim is a skilled and friendly craftsman of 28. She makes baskets of any form, using wicker and straw. Her products sell well and her straw hats are popular with the peasantry. Nimsidim's husband died in 716 TR, leaving her a 10-year old son, but she has made no apparent move to remarry. She employs two female apprentices (19 and 14).

10 APOTHECARY - GEMAKAIS OF FUIMNIA

Size: 4 Quality: 2 Prices: *average*

Gemakais (29) obtains his herbs from wandering journeymen and resells them primarily on receipts of Feeael of Isver [22]. Two apprentices (18 and 15) assist him in the preparation of medicines. Additional herbs are raised in a medicinal garden by his wife (24), who gave birth to a son (3). Gemakais often becomes the target of jokes, mostly due to his small size.

11 HALF-VILLEIN - DIEHEL OF DAFINILA

Diehel (72) is the oldest inhabitant of Edino. His grandson (31) and her wife (28) do most of the work. They have two daughters (10 and 6) and a son (3).

12 VILLEIN - RIDEF OF ALENIEL

Standing 6 feet 7 inches in height, Ridef (28) is the tallest man in town. He is widowed and has a small son of 6.

13 VILLEIN/HERDER - FAUFUS OF CENION

Faufus (47) is Edino's herder. He is not very competent, but inherited the office from his father. While his son (24) and two daughters (17 and 14) tend the sheep, goats and cows, Faufus can often be found in the tavern. These visits occasionally end in disputes with his wife (42).

14 COTTAR - DUITEL OF ARFIAN

As the Sheriff only maintains the minimum demesne to graze his horses, Duitel (39) works the land of various crafts-

men to feed his family. He has a wife (34), a daughter (15) and a son (13).

15 **VILLEIN - LINRAINA OF ARDOMNOL**
 Linraina (29) is widowed since 719 TR, when her husband drowned in the Eryn while fishing. She has three sons (12, 9 and 3) and a daughter (8).

16 **THE SLAIYN OGRE (TAVERN/BROTHEL)**
EREHAS OF BATHNOL

Size: 6 Quality: 1 Prices: *low*

Erehas (43) holds a tavern franchise from the Innkeepers' Guild. His tavern is frequented by the Sheriff's soldiers, the poor and by travellers, who pay some extra tips to the barmaids for their "special attentions". Games of chance and minor purse cutting is regularly found within the Slayn Ogre, and Erehas is the guild-master of the local Lia-Kavair. The Sheriff is aware of the nature of Erehas' business, but has tolerated it so far, as Erehas restricts criminality to a relatively low level. Erehas' wife (30) has born a boy (11) and a girl (8). Two of the barmaids got pregnant by accident, and now there are two illegitimate children without a father: a boy (3) and a girl (6). Erehas hails from Shiran in Tharda, where he was involved in the trade with strange creatures for the Pamesani games. He still maintains contacts to some Jarinese Ivashu hunters.

17 **LITIGANT - TIBEDEN OF HABEFUS**
 Size: 2 Quality: 3 Prices: *high*

Tibeden (35) is familiar with the Sheriff's jurisdiction and appears for various clients at the quarterly Shire Moot. He is assisted by an apprentice (18). Tibeden is affected by a strange phenomenon: He is allergic to magic. In presence of magical activity, he comes out in a strange rash, mainly in his face and limbs.

18 **VILLEIN/APIARIST - KHEMAKFUS OF REVTEL**

Khemakfus (47) and his oldest son (28) are excellent fruit-growers and work an orchard south of Edino. Khemakfus also holds some free land and owns four beehives. Their family consists of Khemakfus' wife (46), his younger sons (12 and 9), his daughter in law (27), and his grandchildren (a girl of 3 and a boy of 2).

19 **COTTAR - HEDF OF DOLAIDIN**
 Hedf is 31 years old and still unmarried. He works as a day labourer for the Sheriff, in the Haven or for various tenants.

20 **VILLEIN - DASAERN OF EVEEHAIS**
 Dasaern (39) is widowed since her husband died in 716 TR. She has a son (11) and two daughters (19 and 16), the oldest having new borne illegitimate twin girls.

21 **HALF-VILLEIN - EMAKFUS OF FAKIEF**
 Emakfus' (43) wife died in birth of his youngest daughter in 719 TR. His large family consists of a son (20) and four daughters (24, 16, 12 and 5).

22 **PHYSICIAN - FEEAEL OF ISVER**
 Size: 2 Quality: 3 Prices: *avg.*
 Feeael (39) is assisted by a young apprentice (14). He co-operates closely with Gemakas of Fumnia, the local apothecary [10]. He is unmarried and cares for the son of his younger brother (5).

23 **COTTAR - TIDFUS OF INATTEL**
 Tidfus is 61 and leaves most of his duty to his oldest son (37) and his grandson (15). His wife (57) and their daughter in law (34) keep the household.

24 **[A] THE SILVER HUB (INN) - AEHTEL OF EVEDERT**

Size: 6 Quality: 4 Prices: *high*
 Aehtel (41) runs the large inn [a] with his wife (27), two apprentices (20 and 15)

and two journeymen (34 and 25). Aehtel produces large amounts of cider and strong beer and a large share of it is traded throughout Dunzael hundred. Aehtel has a son of 9 years. He is Guildmaster of the Innkeepers' Daen Chapter.

[B] FREEMASTER OSTLER - NARETEL OF OSGER

Size: 3 Quality: 3 Prices: *average*

Naretel (33), his wife (25) and an apprentice (14) tend for his guests' steeds and wagons at the adjoining stable [b]. Naretel's daughter is 6 years old.

25 **VILLEIN - ILIRI OF KHADAZRT**
Iliri (47) supports his mother (66), his wife (43), two unmarried daughters (25 and 17) and three younger children (a girl of 12 and two boys of 11 and 6 years).

26 **HALF-VILLEIN - UVUFAM OF GIEAUR**
Uvufam (35) family consists of his wife (34) two sons (10 and 5) and a daughter (12).

27 **FARMER - UVIRI OF ANEHUR**
Uviri's household consists of his second wife (30), three sons (29, 19 and 12), and a farmhand (26) with his wife (23). Uviri (51) is known for his generosity.

28 **VILLEIN - ERMIK OF ERUTE**
Ermiik (47) holds some additional free acres. He supports his wife (48) and three unmarried sons (27, 19 and 13).

29 **COTTAR - LOMIFUS OF DOLAIDIN**
21-year old Lomifus has married a 17-year old girl last winter and already has a baby daughter.

30 **HALF-VILLEIN - LALITE OF EREADAN**
Lalite (42) and his wife (43) have two sons (9 and 3) and a daughter (6).

31 **FARMER - USDART OF LAKIARD**
Usdazrt (28) has a wife (27), two daughters (4 and 2) and a son (10).

32 **VILLEIN - GIINOL OF MABETEL**
Giinol (43) supports his senile

mother (62), his youngest sister (34), a wife (30), two sons (10 and 8) and two daughters (12 and 3).

33 **YEOMAN (LIGHT HORSE) - EVELION OF KAEHTE**

Evelion (48) used to be a sergeant to the preceding Sheriff of Daen. He retired and was granted enough land to support his family, a wife (40), two sons (21 and 11) and three daughters (16, 12 and 9). He still trains the militia.

34 **VILLEIN - ALATIK OF REVTEL**
Alatik (40) and his wife (39) have three sons (15, 13 and 1) and two daughters (19 and 12).

35 **VILLEIN - EMAKAS OF ERUTE**
Emakas (36) lives with his wife (33) five sons (14, 12, 9, 6 and 4) and a daughter (15).

36 **METALSMITH - INEAE OF LOATTE**
Size: 3 Quality: 3 Prices: *average*
Ineael (38) is assisted by a journeyman (26) and an apprentice (15). His wife (35) runs the household and cares for three children - two boys (11 years and 4 months) and a girl (5). Ineael buys tin from Karada's Placer tin mine, and imports lead from Iben's Lode lead mine near Ibonost. With these metals, he manufactures fine pewter items. He is a direct competitor of Tedeon the Potter (see [8]).

37 **HALF-VILLEIN - REHEEL OF ALUFAM**
Reheel (36) is married (wife 34). He has a son (16) and a daughter (9).

38 **HALF-VILLEIN - IAVIA OF REVTEL**
Iavia's husband died in 717. He left her (20) a daughter of 2 years of age.

39 **VILLEIN - REATF OF FEATRT**
Reatf's (25) wife has died in the birth of twin girls in 717 TR. The girls are now nursed by his sister (11).

40 **FARMER - LAIULM OF ALBEOT**
Laiulm (31) supports his aunt (38), a wife (29) and two daughters (10 and 3).

41 **FARMER - KHAUR OF GERTE**
Khaur (38) married again, when his first wife died from a lung infection. From his first wife, he has two sons (15 and 11) and two daughters (17 and 12). His second wife (18) gave birth to a girl (2).

42 **VILLEIN - FAMIAIN OF BLAIDEN**
Famiaain (41) is an incompetent farmer. His heir Goldan (23) would do a much better job. Goldan has a wife (24) and two little children, a boy (3) and a girl (2 months). Goldan's younger brother Laddek (20) shall marry this year.

43 **FARMER - RIMION OF BLAIDEN**
Rimion (47) stays with his wife (40), his youngest son (13) and his married heir (24, wife 18).

44 **COTTAR - LOMIEF OF ERROMIN**
Lomief (53) has sexually harassed his son's (25) wife, with the result that she fled in 717 TR. She left her daughter (2) behind, who was a child of a rape by her father in law.

45 **COTTAR - OPDOL OF LELANDIL**
Opdol (48) is in deep trouble, as his son (27) and daughter in law (27) ran away last year to escape serfdom. Now, Opdol faces a severe fine by the Sheriff. He lives with his two granddaughters (11 and 7), who were left behind by their parents.

46 **FARMER - KEHEER OF UNFIDIL**
Keheer (56), his wife (49), two sons (31 and 25), daughter in law (28), granddaughters (10 and 6).

47 **VILLEIN - RYDEZAIN OF ELLANMIN**
Widower Rydezain (54) is a competent herder. His sheep bear the

best wool in Edino and he has taught both of his sons (29 and 25) in his art. His older son is married (wife 26), but still childless.

48 **TEAMSTER - GIDEULM OF LADUMIN**
Size: 3 Quality: 3 Prices: *average*

Gideulm (37) owns three horses, three carts and four ox carts. He and two journeymen (36 and 23) regularly transport goods for several mercantylers, including Heehfam of Gaminnia [64] and the Sheriff. Gideulm's wife (34) is pregnant and has born him two daughters (11 and 8) before. The absence of a male heir has frustrated Gideulm more than once - now, once again, he is strongly driven by the expectancy of an heir.

49 **WOODCRAFTER - DIATRI OF LINARHIN**
Size: 3 Quality: 3 Prices: *high*
Diatri (33) and his apprentice (15) are busy with making and repairing barrels, chests and maintaining carts and wagons. Diatri's wife (27) is mother of a young boy (5).

50 **CLOTHIER/BONDMASTER - LEVUR OF DAMINTHA**
Size: 6 Quality: 4 Prices: *high*
Levur (51), his wife (45) and his son (23) - both journeymen clothiers - and three "apprentices" produce fine woolen cloth from the wool of the local sheep. The "apprentices" are unmarried women with bastard children, one of them is his son's lover. Additionally, Levur relies on a dozen spinsters, most of them are wives of poor tenants.

Levur is the Clothier's Guildmaster for Daen and also the Sheriff's bondmaster. It is his duty to estimate the value of goods transported by river boats and of the wares stored at the bonding house during quarterly markets and the annual Edino Fair.

51 **VILLEIN/REEVE - INTEL OF REVTEL**
 Intel (58) is a rather competent reeve. He is popular with the peasantry and trusted by the Sheriff. His son (33) seems to be a worthy heir. Intel's wife (53) and his daughter in law (26) produce some high-quality linen cloth. In his spare time, Intel enjoys telling stories to his granddaughter (9) and his grandson (5).

52 **TEMPLE OF PEONI (THE IRREPROACHABLE ORDER) - EBASETHE LEINRI OF UNRIAION**
 The temple is run by Ebasethe Leinri (57) and 3 other male priests. One of the priests recently started to illustrate the chapel [a] with wall paintings depicting various Peonian legends. The priests' cells and workshops are found in the building next to the entry [b]. The temple has been gifted with substantial lands and supports an orphanage [c] with four orphans at the moment.

53 **COTTAR/FISHER - LEMAOT OF AMDARDIN**
 Lemaot (35) and his son Jassof (16) practice river fishing in the Eryn. They use nets and several fish traps. They regularly assist the harbourmaster, Giuef of Antarin [2d], with clearing the docks from sediments and repairing the jetties. Sometimes, Lemaot ferries paying passengers across the Eryn. Lemaot's wife Karen (33) keeps the household and works the land.

54 **CHANDLER /GROCER- KADAS OF ROBAN**
 Size: 4 Quality: 4 Prices: *average*
 While Kadas (28) and his young wife (17) maintain the shop and a small workshop, his two journeymen (19 and 25, both male) cross the countryside as pedlars, selling various necessities like needles, spices, combs, cheap jewellery or various "magical" potions. Kadas obtains most of his wares from craftsmen at Dyrisa or Aleath.

55 **VILLEIN - DALIER OF ERUTE**
 Dalier (59) is slowly losing his mind, but he stubbornly forces his family to obey his whims. His wife (53), an unmarried

sister (52), his son (35) and a daughter in law (31) are desperate. If his family cannot arrange to have his son work the holding, the family may have serious problems with meeting its obligations to the Sheriff. Dalier's son has three daughters (10, 7 and 1) and one son (5).

56 **VILLEIN - TEBEOL OF DOLAIDIN**
 Tebeol (36) cares for his father (67) and mother (59), his wife (31), two daughters (13 and 10) and a son (12).

57 **FARMER - UVVAIS OF AFINDIN**
 Uwais' (32) household consists of his wife (26), an unmarried (17) and a widowed sister in law (23), an half-orphaned niece (8) and a son (5).

58 **SALTER - HIMAKULM OF DADUIEL**
 Size: 5 Quality: 2 Prices: *low*
 Himakulm (38), his two journeyman (35 and 26) and two apprentices (19 and 16) are always busy with smoking meat and fish and pickling vegetables for the winter. He also makes a good cheese from a blend of sheep and goat milk. His wife (28) doesn't help with the business, but is known as Edino's best source of gossip. Himakulm has two sons (10 and 5).

59 **VILLEIN/APIARIST - GIVAIS OF BASTDEL**
 The skilled fruit grower and apiarist Givais (36) is widowed and works the land with his son (12). He tends a dozen beehives for the Sheriff and is allowed to keep half of the harvest for himself.

60 **VILLEIN - ESATRI OF ALAIN**
 Esatri (37) is responsible for his wife (32), a daughter (14) and two sons (11 and 6).

61 **FARMER - FANNEA OF KAEHTE**
 Fannea is a very intelligent and charming person and a competent farmer. She is still unmarried, but has three children (two sons of 9 and 3 and a daughter of 7), whose father(s) are unknown. This has

given fuel for many rumours. Some women think of her being the Sheriff's mistress, others simply accused Fannea of being a prostitute.

62 **COTTAR - HEKITEL OF CELENDAN**
Hekitel (29) has lived alone with his three daughters (7, 4 and 1) since his wife died in birth of the youngest girl.

63 **HALL OF THE MANGAI**
The Hall is used by various guilds as a meeting place and for social events. The keys are kept by Heehfam of Gaminnia [64].

64 **MERCANTYLER - HEEHFAM OF GAMINNIA**
Size: 3 Quality: 2 Prices: *low*
Heehfam (27) inherited the business and some considerable wealth from his widely honoured father. His father, Uefdeg was repeatedly beeing choosen as Daen's Mercantylers' Guildmaster and once even was the elected Guildmaster of the Mercantylers' Kandian Grandchapter. Uefdeg travelled as far as Trierzon, in 711 TR. His heir Heehfam's competence did not match his ambitions, and so much of his inheritance was lost in the financing of various high risk investments. Though, Heehfam is Guildmaster of the Daen Chapter and he is still considered an important person within the local Mangai, who has elected him as its spokesman. Heefam's mother (45) and younger brothers (23 and 10) and sister (16) are outraged by Heehfam's losses, but his wife (23) has so far managed to keep emotions within the family in balance. Heehfam has a single son (4).

OFFMAP (THE FOLLOWING KEY NUMBERS DO NOT CORRESPOND TO THE NUMBERS ON THE MAP, FOR THE KEY NUMBERS **65** TO **75** ON THE MAP SEE "GEMELA"):

65 **FARMER - GAEART OF GAMINARA**
Gaeart (41) holds the largest estate in Edino. He works it with his oldest son (17) and a farm hand (38). His second wife (23) takes care of the household, the garden and their son (6).

66 **FARMER - DAANA OF BLAIDEN**
Daana (31) inherited her small farm from her father. She is assisted by her younger sister (24).

67 **YEOMAN (LIGHT FOOT) - ILDEIM OF LEORNIA**
Ildeim (40) holds his land for 40 days of military service. He supports a wife (37), two daughters (18 and 9) and two sons (11 and 5).

68 **YEOMAN (LF) - UVMAUR OF DAIMION**
Uvmaur (51) has an obligation of 28 days for his holding. His oldest son (25) and his daughter in law (20) support him and his wife (44). The youngest member of the family is his grandson (3).

69 **VILLEIN - LANFADA OF REVTEL**
Lanfada's husband didn't return from poaching in the forest in 716 TR. Since then, she has to run the household alone. She (27) has to support a daughter (8) and a son (5). She has petitioned the Sheriff to be allowed to remarry.

70 **HALF-VILLEIN - KADON OF KAEHTE**
Kadon's daughter (19) got pregnant from one of the Sheriff's soldiers and has born twins in 717 TR. Since then, Kadon (42) and his wife (39) have tried to convince the man to marry their daughter.

71 **YEOMAN (LIGHT HORSE) - REEHF OF AMDARIAN**
Reehf (38) has a wife (33) and three daughters (12, 9, 6). He owes 60 days of service to the Sheriff.

72 HALF-VILLEIN - GEMIRT OF ERUTE
Gemirt (41) has a wife (35) and four sons (15, 10, 7 and 4).

73 ROPEMAKER - KERIK OF UNFIDIL
Size: 3 Quality: 3 Prices: *low*
Kerik (29) operates his ropewalk with the assistance of his wife (23) and an apprentice (17). He has a small son (5).

74 COTTAR/BEADLE - GEVR OF DOLAIDIN
Gevr (27) was appointed to the office due to his extraordinary and imposing stature and strength. He is somewhat dull-witted, but very loyal to the Sheriff and dependable if instructed carefully. He has a very small wife (19) and a tiny daughter (2).

75 WOODCRAFTER - ILASTAN OF ERANIEL
Size: 3 Quality: 4 Prices: *average*

Ilastan (53), his son Aeldast (27), who has already reached the rank of a master wood-crafter, and an apprentice (17) have specialized in carpentry and agricultural tools, while Diatri of Linarhin [see 49] prefers cooping and coach building. His daughter in law died in an accident, falling while thatching a roof, leaving two girls (7 and 4).

76 VILLEIN - OSHEAIS OF SINARRIL
Osheais (42) has a wife (37), four sons (18, 13, 7 and 5) and a daughter (9).

77 TIMBERWRIGHT/WOODWARD -
OBBERT OF FUFARA
Obbert (35) is not only responsible for the assart, but he also acts as the Sheriff's Woodward. He is assisted by an apprentice (16) and his wife (28), who has given birth to a son (5) and a daughter (9).

Caer Edino

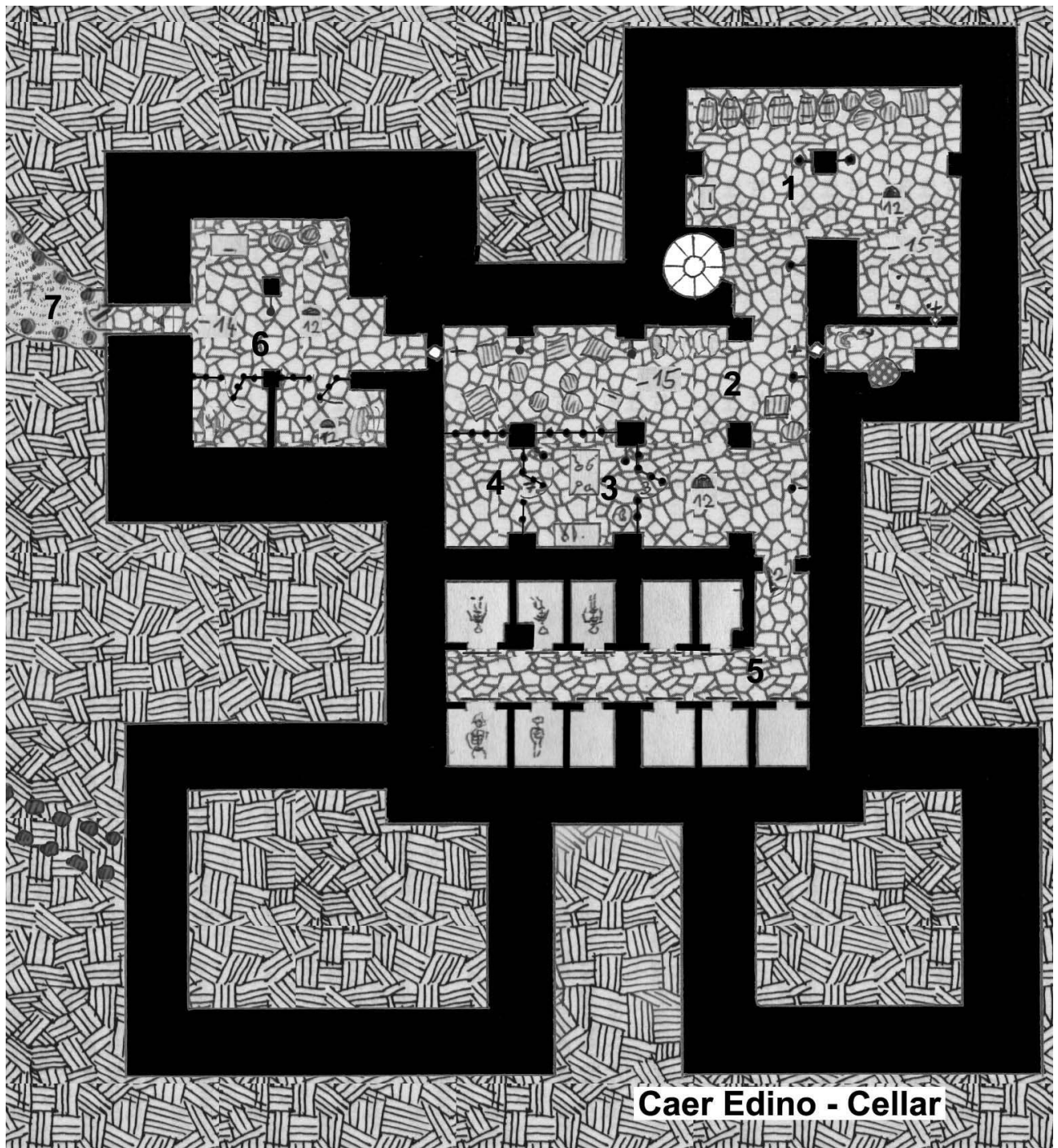
Cellar

The cellar is covered by cross vaults.

1 STORAGE AREA. This area is the coldest room within the keep and therefore used to store meat and other perishable stocks. A trapdoor in the ceiling of

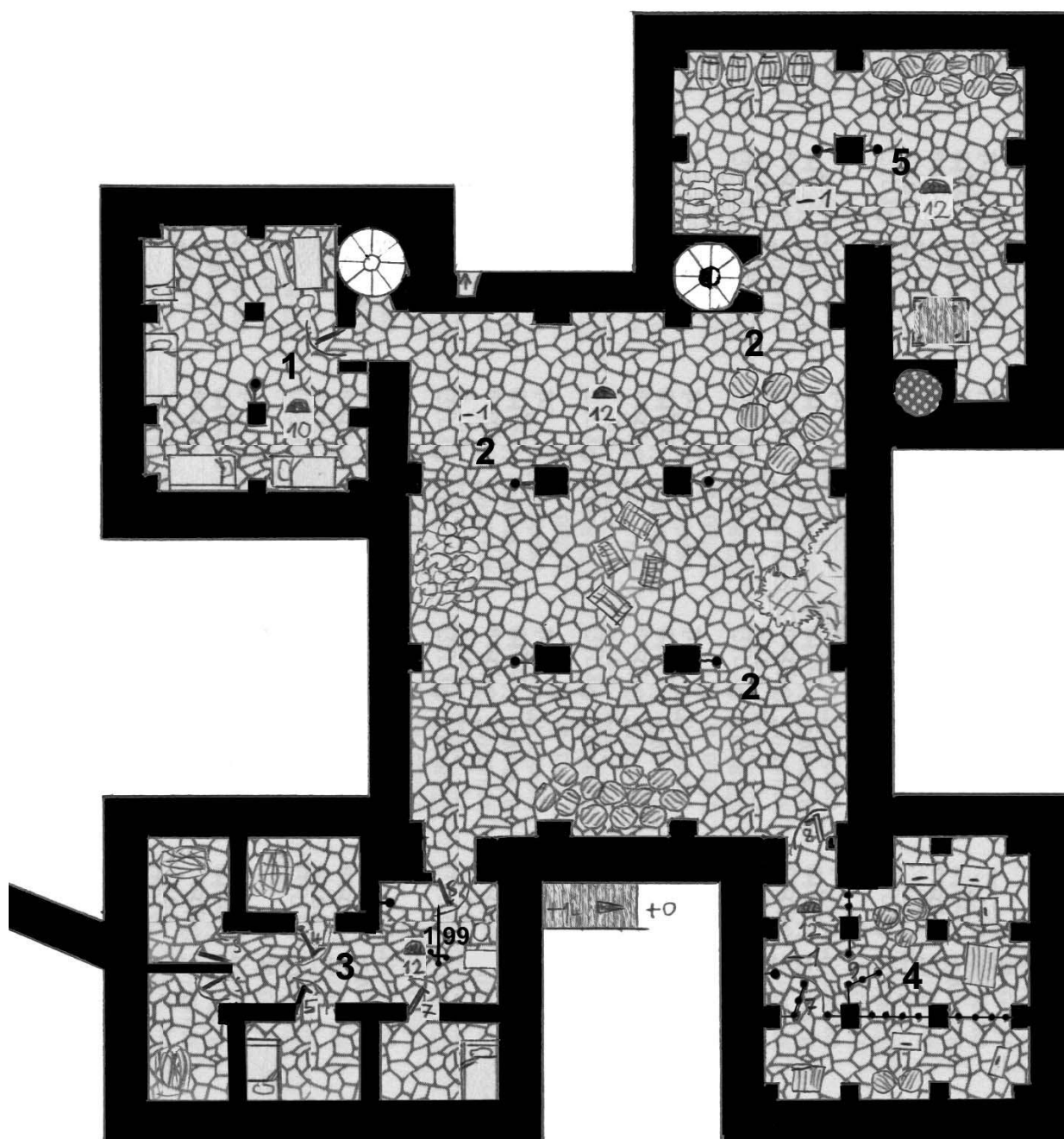
the northern vault is used to haul heavy loads to and from ground level.

2 STORAGE AREA. Various kinds of goods are stored here. There are barrels of pitch and stones for the defense of the keep.



3 **INQUIRY AREA.** This part of the cellar is seldom used now. Under the regime of the Corani Empire and the Jihadists things were different.

4 **HOLDING CELL.** Today, this prison next to the inquiry area is used to demoralize uncooperative captives.



Caer Edino - Groundfloor

0' 10' 20'



5 **CRYPT.** The crypt holds the remains of three members of Clan Kand. Their names are indicated on the epitaphs that seal the crypts. Two further crypts hold the remains of unknown persons who seem to have been buried during the time of the Theocracy.

6 **SECRET ROOM.** This room was constructed by one of the deputy governors of the Corani Empire as a secret prison for persons whose presence should better be concealed. Today, only the heads of Clan Kand - descendants of the last Corani deputy governors of Aleathia Province, know of the existence of this room.

7 **SECRET PASSAGE.** The tunnel is 6' high and supported by wooden timbering. It runs westward below the courtyard and ends at the bank of the Edin River below the north-western ring wall. The knowledge of this tunnel enabled Andasin of Kand to smuggle men into the Keep, and thereby to open the gates.

8 **SECRET ROOM.** This room connects to the shaft of the keep's well. It was constructed by the same governor who ordered the construction of the secret passage [see 6] and was intended as an escape route in the case of a siege. The shaft reaches up to the kitchen and further to the Sheriff's living room on the fifth floor. Two concealed doors provide access to this room.

Groundfloor

The ground floor is completely covered by a cross vault.

1 **DORMITORY.** The dormitory is used by various servants and guests.

2 **STORAGE AREA.** Various goods for daily life and for times of war are stored here: straw (for the floors), provisions, tools, arrows, pitch, ropes and salt.

3 **PRISON.** Five holding cells (two secured by simple bars, three with locks) hold persons sentenced to prison or waiting for their trial. The prison is permanently guarded by one of the Sheriff's mercenaries.

4 **TREASURY/ARMOURY.** This room is secured by a massive, iron framed door with a complicated lock (rating: 8). The treasury is separated by iron bars into two parts. Both are additionally secured by locked iron-grate doors (ratings: 9 and 7). The larger one holds coffers of silver - the Sheriff's feudal obligation to the king. The smaller contains weapons and arrows for the case of defense.

5 **STORAGE AREA.** Barrels of wine and beer, spices and various nourishments are kept in this place. The storage area is interconnected with the kitchen on the second floor and the storage area in the cellar by means of trapdoors.

Second Floor

This floor has a wooden ceiling, that rests on massive wooden beams.

1 **GREAT HALL.** The great hall is used for the daily meals, but also for audiences, feasts and the manorial court for Edino (held by the Sheriff's bailiff). The tables on this floor are reserved for male guests, while the ladies are seated on the gallery of the third floor. Banners with the arms of the former sheriffs of Daen decorate the walls. The room is lit by windows on the third floor, by a large fireplace and by several torches.

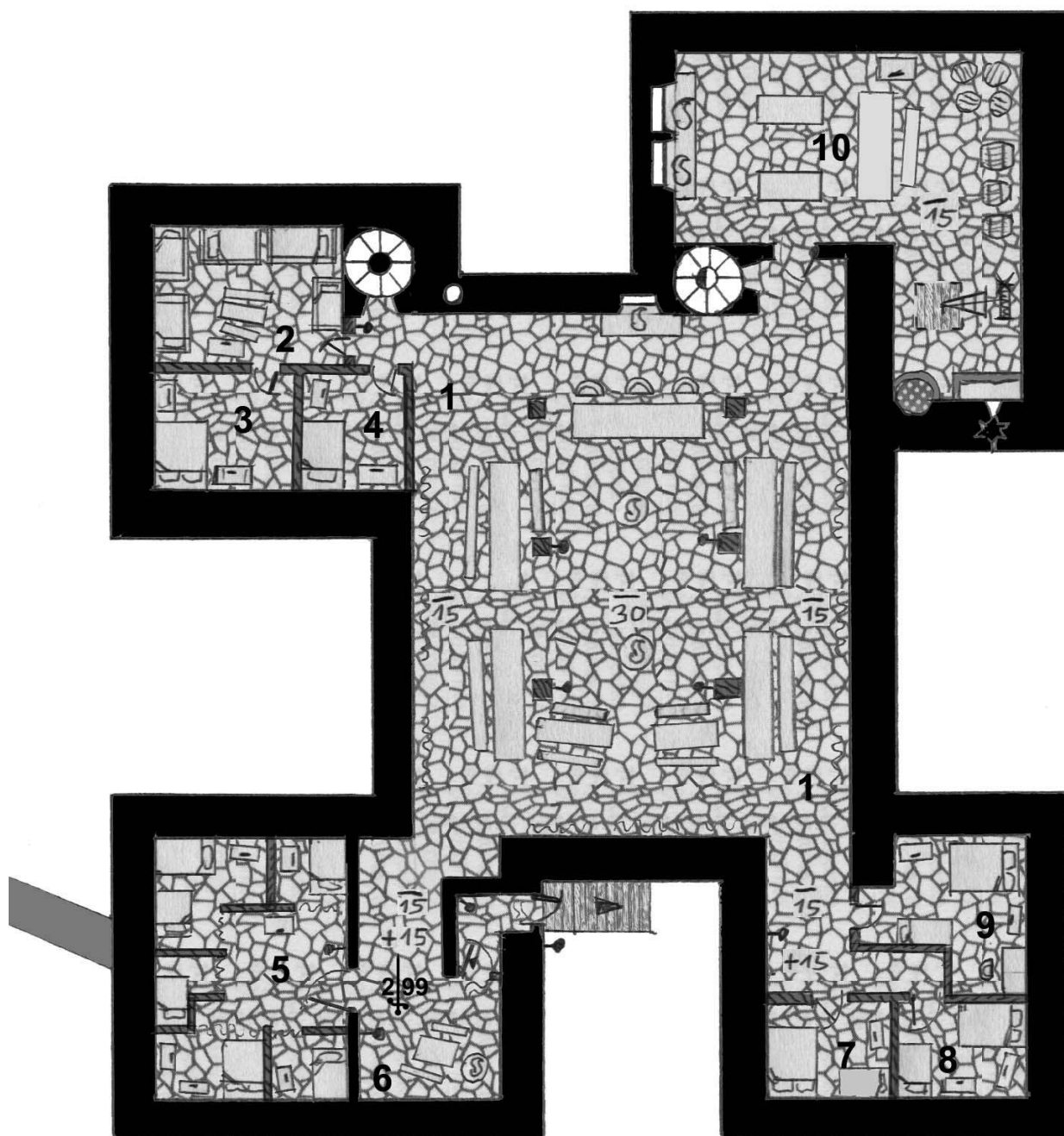
2 **GUARDS' QUARTER.** Ten longbowmen, or rather eight men and two women, are garrisoned in this room.

3 **SERGEANT - RAMAFAN OF AFINDEN.** Ramafan is a powerful woman of 36. She commands the longbowmen quartered in

the next room. She is a skilled archer and is familiar with siege engineering. Afinden regularly disputes with Kakitel of Daimion, who commands the rest of the garrison (20 light foot). Kakitel is a conservative Laranian and thinks women should leave the fighting to the men. Despite this problem, Ramafan is well respected by her men and the captain of the guard.

4 GUESTROOM. This room is reserved for messengers and other late visitors.

5 GUARDS' QUARTERS. Five mercenaries (medium horse) - all of them knights - use this room. They are under the direct command of the captain of the guard. The knights are: Esattel of Daimion (25), Enber of Khadazrt (51), Tabefus Avandar (24), Medazais of Bazyd (36) and Gedazte of Vahem (37).



Caer Edino - Second Floor

6 **GUARD'S ROOM.** Two men guard the entry to the keep by night and day.

7 **CHEF - OSADEL OF BLAIDEN.** Osadel (40) is a reasonably good cook. His wife (42) and sons (16 and 6) work with him in the kitchen.

8 **ALEWIFE - SAMAEAL OF ALBEOT.** Samael (37) is married and lives here with her husband (39) and her daughter (16), both of them support Samael in her work. Samael brews good ale and is always busy with the preparation of this essential beverage.

9 **CHAMBERLAIN - MAREMAL OF UNFIDIL.** Maremal (44) runs the Sheriff's household. He supervises the servants and controls the chef and the alewife. Maremal lives with his wife (42), a daughter (8) and a son (5).

10 **KITCHEN.** Seven kitchen servants work here under the control of Osadel of Blaiden, the chef [see 7]. Two large fire places are used for cooking the dishes that are prepared on the three large tables. The eastern corner provides a crane to lift heavy crates, barrels or meats through the trapdoor in the floor that gives access to two levels of storage areas. A well provides the keep with fresh water. A sink is drained through the wall. The kitchen is the warmest place in the keep and so most of the kitchen help and some other servants sleep on strew mattresses laid on the kitchen floor during the night.

Third Floor

1 **CORRIDOR.** The spiral staircase is the only access to the upper floors. An attacker would have to ascend to this level by means of the spiral staircase at [16] and then circumvent the gallery to make his way.

2 **GUEST ROOM.**

3 **HERALD - EVEDEZDAN OF PORDAEN.** Evedezdan (27) has studied at the Violet Mantle Palace of Arms at Aleath. He counsels the Sheriff and keeps the records of the genealogy of all local clans. The records are kept in [4].

4 **SECRET ROOM.** This small room is used to keep the herald's records - the annals of Edino, the genealogies of the local clans of nobility, and especially of the Sheriff's vassals. The hidden door is known to many of Caer Edino's officials.

5 **LAVATORY.**

6 **GALLERY/GREAT HALL.** The gallery overlooks the great hall on the second floor. During feasts and daily meals, the household's ladies are seated at the large tables. Valuable tapestries depicting the liberation of Edino by Andasin of Kand decorate the wall behind the ladies' seating.

7 **CORRIDOR.**

8 **GUESTROOM (SERVANTS).** This room belongs to one of two suites (rooms 8 and 9; 10 and 11) intended to house important guests. The room is intended to be occupied by the guest's servants.

9 **GUESTROOM.** This room is intended to be used by important guests, such as barons, sheriffs or clerical officials. The guest's servants are accommodated in the anteroom [see 8].

10 **GUESTROOM.** [See room 9].

11 **GUESTROOM (SERVANTS).** [See room 8.]

12 **LADY LASYR AVANDAR.** The sheriff's unmarried aunt is 64. She still

joins the ladies and is a skilled embroider-
ess.

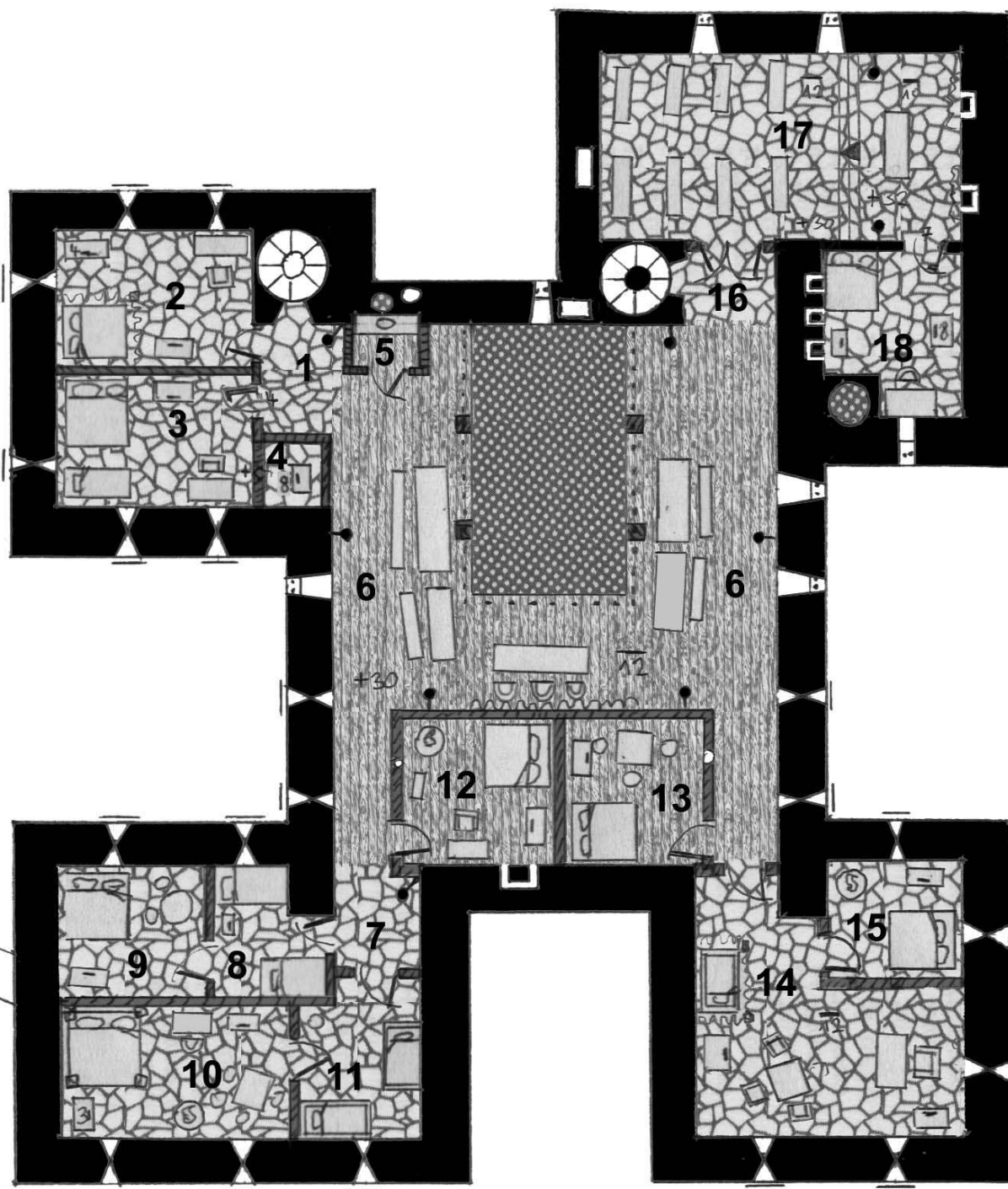
13 **SIR MEDOT AVANDAR.** Medot is 66, widowed and an uncle of the sheriff.

14 STEWARD - SIR DIDEOL OF KANDRY. When staying at Edino, Dideol (27) resides in this room. His histrionic manner ma-

kes him the topic of daily gossip. His squire, Obeaden of Barayn (19) is usually hot on the heels of his master.

16 CORRIDOR.

17 LARANIAN CHAPEL. The room is sparsely decorated by two wall han-



Caer Edino - Third Floor

gings. Two steps lead up to the altar. The alcoves behind the tapestries hold liturgical equipment. Masses are held daily at dawn and are well attended.

18 **CHAPLAIN - MATAKEA SAFOLAEN OF MILLARD.** Safolaen (27) intended to make a church career. In 715 TR, his Obasaran sent him to serve as chaplain to the Sheriff of Daen, a promising office for an ambitious young cleric. Safolaen was disappointed, when he learned that the sheriff travels most of his time and employs a litigant to preside his chancery. These circumstances minimise Safolaen's influence on the sheriff and foils any attempts to gain access to valuable confidential information. The disappointment with his situation has tempted him to use drugs and now, he is becoming addicted to Fanosel. Safolaen made his first experience with this drug last winter in the Slain Ogre, where an intermediary of Erehas of Bathnol still sells it to him.

Fourth Floor

1 **LAVATORY.**

2 **CORRIDOR.**

3 **CAPTAIN OF THE GUARD - SIR JAMELETH AVANDAR.** Sir Jameleth (37) is the son of Sir Girte Avandar, the sheriff's bailiff. He personally commands the company of elite veteran horsemen and leaves the command of the foot troops to his two sergeants. Sir Jameleth suffers from insomnia, and can often be found on the wall walks, instructing the guards by night. Sir Jameleth is known for his chivalric manners and his company is sought by many noblewomen. His squire, Akdden of Fandael (18) stays in the chamber of his master.

4 **STOREROOM.**

5 **BOWER.** The household's ladies use this heated room for common activities such as needlework. They are often entertained by the lord's harper or wandering musicians or thespians.

6 **HARPER - OBRDEN OF ZAREL.** Obrden has studied at the Harpers' Hall in Aleath. Only 26 years old, he is quite young to hold the position and is popular with the household's ladies.

7 **LADY-IN-WAITING.** Lady Ladoel's personal maid stays here.

8 **LADY LADOEL OF DEMOUNE.** Lady Ladoel (62) is the wife of Sir Girte Avandar, the bailiff.

9 **PASSAGEWAY.**

10 **BATTLE PLATFORM.** This lowest of four platforms is covered by a simple polygonal spire of wood and slate. A one-man-guard keeps a lookout from here.

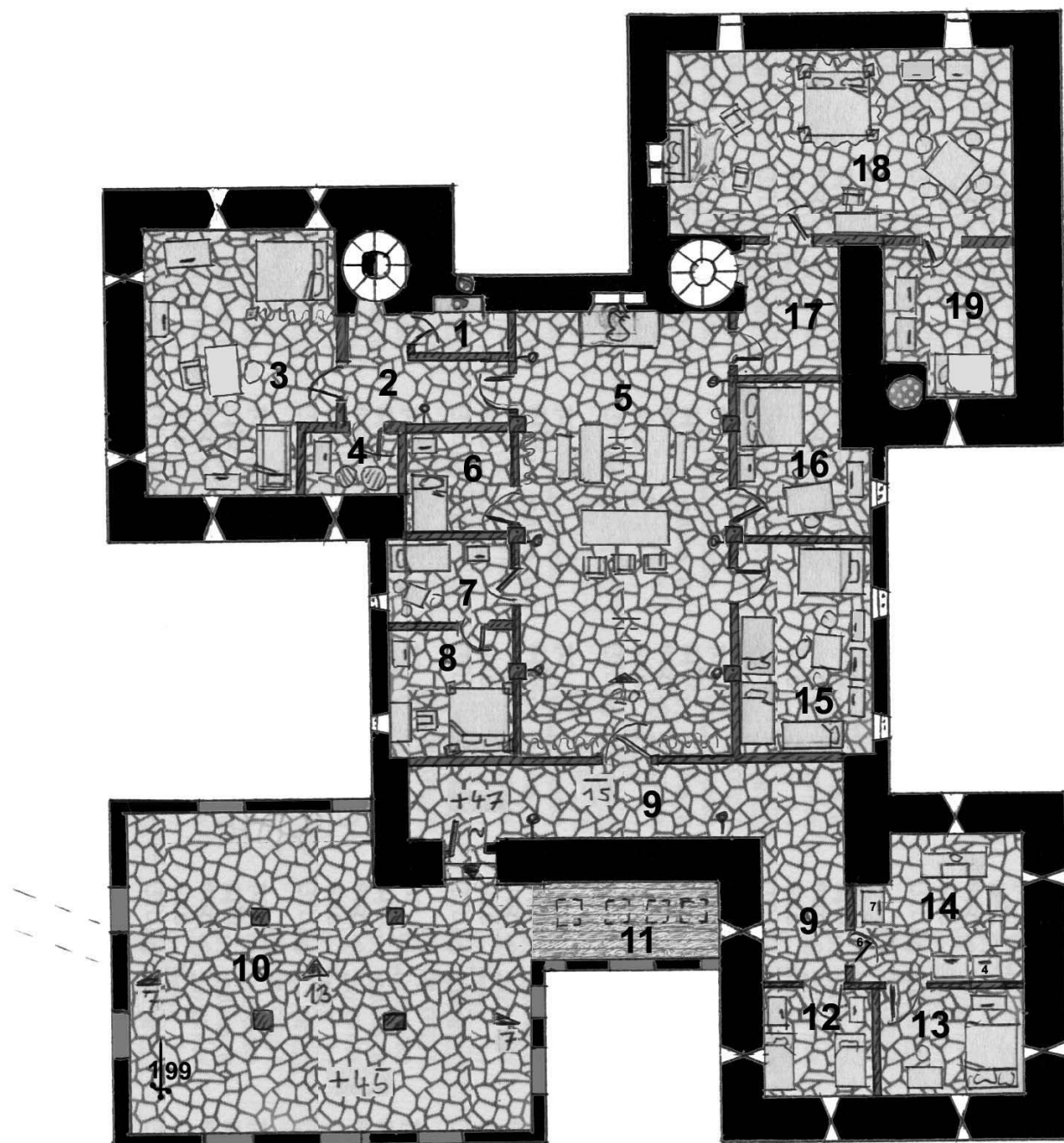
11 **MACHICOLATION.** The machicolation greatly improves the defenses of the gate. It spans the space between the two towers. Four trapdoors enable the defenders to drop stones or hot pitch or water onto the heads of their enemies from a height of 45'.

12 **CHANCERY/MOOT CLERKS - LIAS OF KADEL AND OVDEFUS OF TEBRET.** Liias (29) and Ovdefus (27) work in the chancery. They keep the records about toll, taxes and feudal obligations and take the records during the shire moots. Both of them are frightened by Ramafa of Saril, their superior in the chancery, who occasionally has beaten them for not meeting her repeated orders to prepare docu-

ments concerning legal cases, Ramafa was interested in. Though beating is a usual practice to maintain subordinates at work, Lias and Kadel got increasingly uncomfortable with their situation since Ramafa arrived in 717 TR.

13 **BONDED MASTER LITIGANT - RAMAFA OF SARIN.** Ramafa (31) has an impressive frame and extreme strength, even compared to men. By her physical appearance

she is able to impress most opponents by her presence. Besides, she is a niece of Aleath's most brilliant litigant, Mylene of Sarin. After her apprenticeship, Ramafa stayed four years with her aunt and learned how to act at court. At Edino, she presides over the chancery and also acts as the Sheriffs inquisitor. Her subordinate clerks are quite unskilled and slow, a fact that has angered Ramafa regularly. She has repeatedly



Caer Edino Fourth - Floor

asked the sheriff to dismiss and replace the men, but they are sons of well-deserved retainers of the Sheriff and so far have maintained their position.

14 **CHANCERY.** The litigant's desk oversees the room from a 1' pedestal. Two desks are the workplaces for the moot clerks. The chancery is kept locked during the absence of the clerks and the litigant. Important documents are kept in locked chests. Keys to the chancery are maintained by the Bailiff of Edino, the litigant and the two scribes. The keys for the chests are kept by the litigant and the bailiff only.

15 **NURSERY - PALOA OF RECTEL.** Nuresmaid Paloa of Revtel (40) takes care of the sheriff's offspring, his two sons - Albeim Avandar (13) and Fadezr Avandar (8) - and his daughter Ilmaka Avandar (3). Albeim serves the ladies as a page. The sons are taught by the chaplain, Matakea Safolaen, and by the herald, Evedezdan of Pordaen, in history, Laranian theology, heraldry, basic mathematics and literacy.

16 **BONDED MASTER CLOTHIER - AKDEOL OF DARUD.** Akdeol (43) sews clothing for the sheriff's family. He is assisted by his wife (36), who oversees the washing of the nobles' garments. Akdeol sometimes instructs the household's ladies with difficult parts of their needleworks.

17 **CORRIDOR.**

18 **LADY JADAEAL OF KANDRY.** Lady Jadael (33) married Sir Crasel Avandar in 705 TR, one year after Crasel's appointment to his office. Her brother is the influential Lord of Clerdy Manor who is the constable of Ibonost, the king's favorite summer residence. Lady Jadael's younger brother Dideol is Sir Crasel's ste-

ward and her oldest nephew, Ovdedan, is her husband's squire. These relations reflect the strong ties between Clans Avandar and Kandry.

19 **LADY-IN-WAITING.** Lady Jadael's maid lives in this chamber. The most valuable parts of the lady's garments and jewellery are stored in one of the chests in this room.

Fifth Floor

1 **CORRIDOR.** The staircase is used by the servants and guardsmen to access the roof.

2 **BAILIFF OF EDINO - SIR GIRTE AVANDAR.** Sir Girt (58) is a cousin of the sheriff. His wife, Lady Ladoel of Demoune, occupies her own chamber on the fourth floor. His son Jameleth is the captain of the sheriff's guard. Sir Girt is a loyal retainer of his cousin and most of the manorial duties regarding Edino are left to him, while Sir Crasel meets his responsibilities as the Sheriff of Daen. Sir Girt's squire, Gaeael of Moultey (19) is the second son of an old friend of Sir Girt.

3 **BATTLE PLATFORM.** The largest platform is open to the sky. Small machicolations enhance the defenses of the keep's walls.

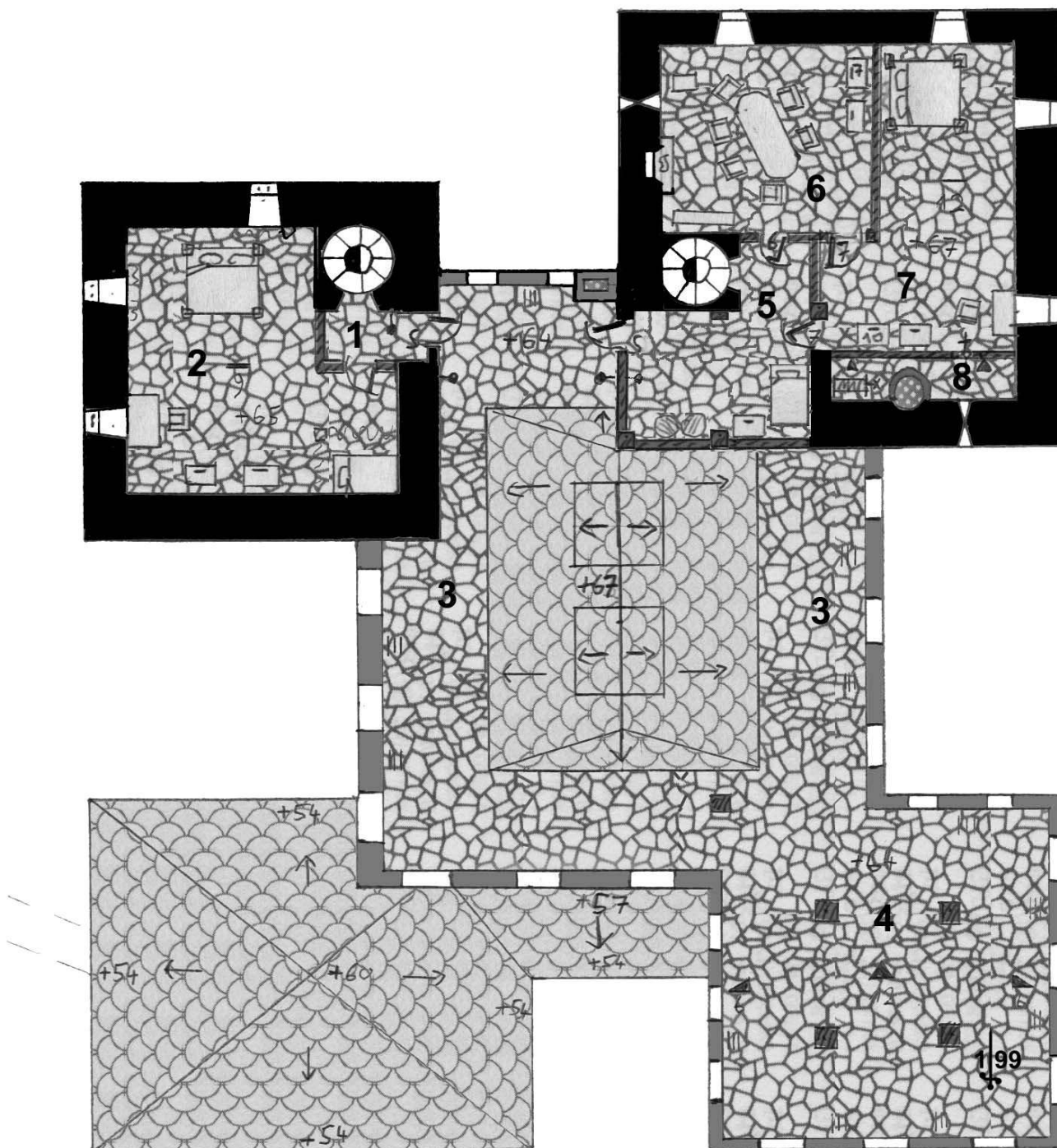
4 **BATTLE PLATFORM.** This part of the platform is covered by a slated roof. One of the mercenaries is on guard here at night and day.

5 **ANTECHAMBER.** This room and the staircase are used primarily by the Sheriff and his spouse. Visitors and servants usually use the staircase in the west tower [see room 1]. The bed is used by Sir Crasel's squire, Ovdedan of Kandry (17), oldest son and heir of the lord of Clerdy.

6 COUNSEL CHAMBER. The comfortable room is used for private audiences, conferences and confidential negotiations. The locked chest holds the Sheriff's most important documents. Keys are held only by the Sheriff and his bailiff, Sir Girte. The desk in the western corner is used by a se-

cretary during audiences. The Counsel Chamber is kept locked when not in use.

7 SHERIFF OF DAEN - SIR CRASEL AVANDAR. Sir Crasel resides in this room while at Edino. The chests hold his wardrobe. Important documents are kept in the adjoining counsel chamber.



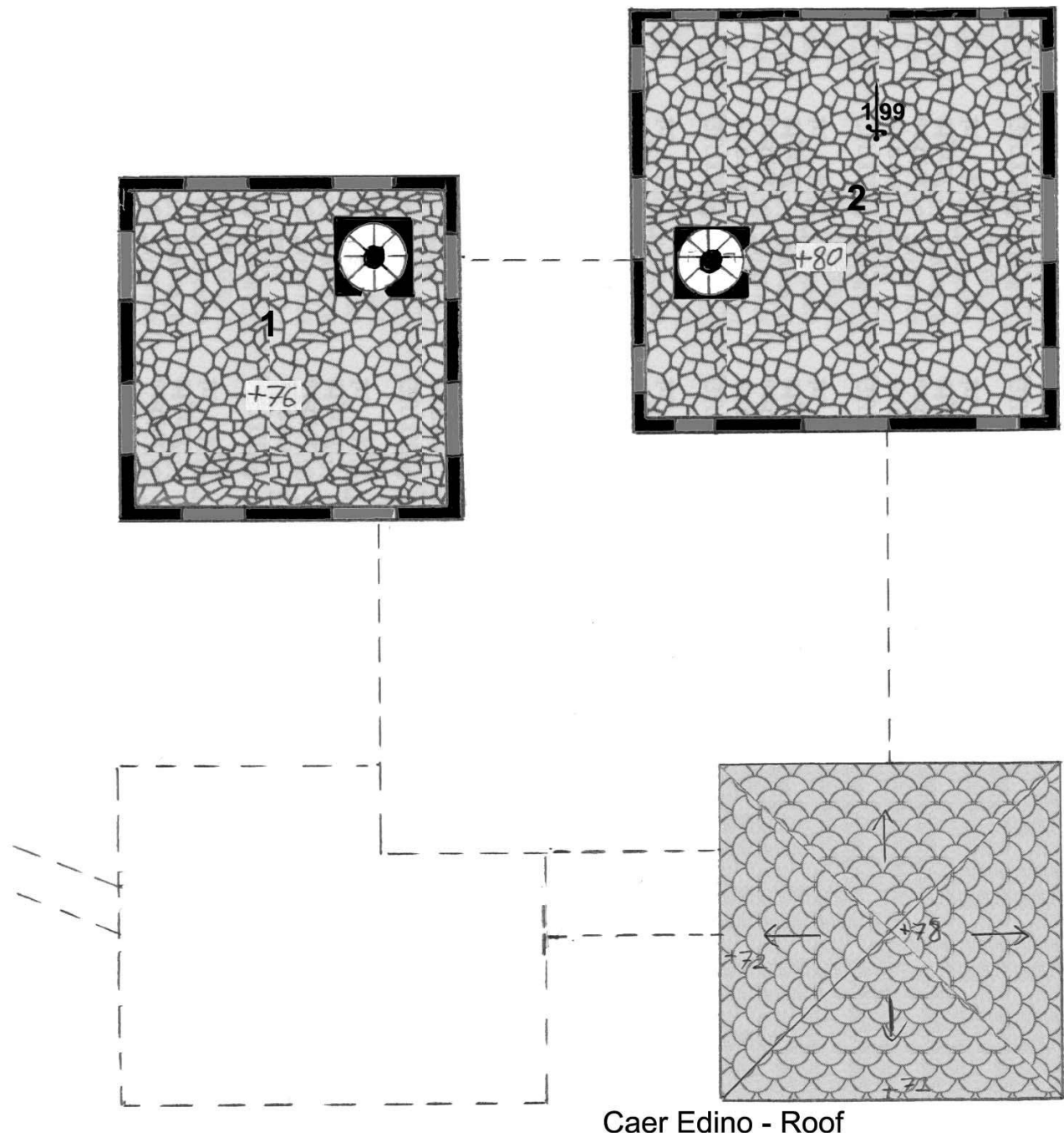
Caer Edino - Fifth Floor

8 SECRET ROOM. This room is the top-most portion of the well shaft. The shaft can be used as an escape route, opening to the kitchen on the second floor and in a secret chamber in the cellar. Peepholes give a view on the sheriff's private room. The secret room is known to the Sheriff, his bailiff and three members of Clan Kand, including the king.

Roof

1 BATTLE PLATFORM. The platform is open to the sky.

2 BATTLE PLATFORM/WATCH TURRET. This is the keep's highest point, and so it is manned by day and night with at least one guardsman, keeping look out for approaching danger.



Caer Edino - Roof

Characters

Sheriff of Daen Sir Crasel Avandar (m)

HGT 70" WGT 162lbs FRM AVERAGE
CMX MEDIUM EYES BLUE HAIR RED

BIRTH 15/05/672 (ANGBERELIUS)

STR	13	INT	15	EYE	10
END	14	AUR	12	HRG	17
DEX	12	WIL	13	SML	13
AGL	12	MOR	11	TOU	09
SPD	12	COM	17	VOI	14

Religion: Larani (18 PP)

Condition	70	Riding	78
Dodge	68	Knightshield	86
Initiative	71	Dagger	55
Mobility	60	Broadsword	87
Unarmed	52	Mace	66
Awareness	64	Lance	63
Intrigue	84	Heraldry	46
Ritual	24	Rhetoric	62
Oratory	67	Law	64
Heraldry	56	Lyre	37
Lakise/sc	81	Physician	24
Hârníc	84	Falconcraft	41

Constable Sir Girté Avandar (m)

HGT 68" WGT 169lbs FRM AVERAGE.
CMX MEDIUM EYES BLUE HAIR RED

BIRTH 22/02/662 (ARALIUS)

STR	10	INT	12	EYE	15
END	11	AUR	08	HRG	07
DEX	12	WIL	14	SML	13
AGL	10	MOR	12	TOU	10
SPD	13	COM	09	VOI	11

Religion: Larani (15 PP)
Histrionic [13]

Condition	72	Riding	72
Dodge	71	Broadsword	89
Initiative	81	Lance	64
Mobility	60	Dagger	52
Unarmed	68	Knightshield	77
Awareness	76	Heraldry	34
Intrigue	73	Law	58
Ritual	17		
Hârníc	82	Lakise/sc	86

Steward Sir Dideol Kandry (m)

HGT 71" WGT 186lbs FRM HEAVY.
CMX DARK EYES BROWN HAIR BLACK

BIRTH 04/04/693 (FENIRI/AHNU)

STR	15	INT	13	EYE	11
END	16	AUR	08	HRG	09
DEX	10	WIL	12	SML	11
AGL	11	MOR	13	TOU	08
SPD	10	COM	10	VOI	12

Religion: Larani (21)

Condition	84	Riding	81
Dodge	74	Bastardsword	89
Initiative	86	Lance	72
Mobility	60	Knife	64
Unarmed	71	Knightshield	87
Awareness	68	Heraldry	31
Intrigue	65	Dancing	46
Ritual	19	Agriculture	32
Hârníc	84	Lakise/sc	83
Acting	67		

Litigant/Inquisitor Ramafa of Sarin (f)

HGT 66" WGT 174lbs FRM MASSIVE
CMX MEDIUM EYES BLUE HAIR BROWN

BIRTH 26/11/689 (MASARA)

STR	18	INT	12	EYE	12
END	16	AUR	14	HRG	10
DEX	12	WIL	15	SML	14
AGL	14	MOR	06	TOU	11
SPD	15	COM	14	VOI	15

Religion: Ilvir (22 PP)
Double jointed legs

Condition	80	Law	83
Dodge	70	Folklore	54
Initiative	72	Rhetoric	84
Mobility	75	Oratory	76
Unarmed	51	Metalcraft	42
Awareness	48	Mineralogy	14
Intrigue	70	Weaponcraft	14
Ritual	14	Jarinese	34
Hârníc	74		

Chaplain Safolaen of Millard (m)

HGT 59" WGT 133lbs FRM HEAVY
CMX DARK EYES BROWN HAIR BROWN

BIRTH 14/02/687 (ARALIUS)

STR	15	INT	13	EYE	13
END	13	AUR	15	HRG	14
DEX	13	WIL	12	SML	14
AGL	13	MOR	11	TOU	13
SPD	15	COM	14	VOI	17

Religion: Larani (26 PP)
Drug Addiction [06]

Condition	65	Riding	1
Dodge	65	Spear	68
Initiative	66	Bastardsword	72
Mobility	75	Knightshield	62
Unarmed	42	Oratory	51
Awareness	56	Singing	58
Intrigue	39	Lakise/sc	84
Ritual	56	Emela	24
Hârníc	62	Khruni/sc	84

Captain of the Guard (m) Sir Jameleth Avandar

HGT 69" WGT 173lbs FRM HEAVY
CMX DARK EYES BROWN HAIR BLACK

BIRTH 08/01/683 (ULANDUS)

STR	15	INT	14	EYE	15
END	17	AUR	14	HRG	14
DEX	13	WIL	10	SML	15
AGL	16	MOR	11	TOU	14
SPD	15	COM	13	VOI	12

Religion: Larani (20 PP)
Double jointed legs
Insomnia [06]

Condition	75	Riding	86
Dodge	80	Lance	78
Initiative	81	Longsword	92
Mobility	75	Knife	68
Unarmed	71	Knightshield	85
Awareness	72	Heraldry	39
Intrigue	62	Physician	24
Ritual	13	Lute	38
Hârníc	81	Lovecraft	64

**Sergeant of the Guard
Kakitel of Daimion (m)**

HGT 66" WGT 145LBS FRM AVERAGE
CMX DARK EYES BROWN HAIR BROWN

BIRTH 25/05/679 (ANGBEREL.)

STR 17 INT 12 EYE 10
END 13 AUR 17 HRG 11
DEX 13 WIL 15 SML 13
AGL 12 MOR 11 TOU 14
SPD 13 COM 14 VOI 15

Religion: Larani (16 PP)

Condition 72 Shortsword 93
Dodge 81 Roundshield 42
Initiative 86 Falchion 87
Mobility 65 Dagger 64
Unarmed 72 Heraldry 41
Awareness 55 Survival 62
Intrigue 55 Foraging 46
Ritual 14 Physician 23
Hârníc 64
Telepathy 16 Disembodiment 16

**Sergeant of the Guard
Ramafam of Afindin (f)**

HGT 64" WGT 110LBS FRM SCANT
CMX MEDIUM EYES BROWN HAIR BROWN

BIRTH 23/03/684 (FENIRI)

STR 14 INT 15 EYE 15
END 12 AUR 11 HRG 14
DEX 15 WIL 15 SML 08
AGL 18 MOR 11 TOU 14
SPD 14 COM 14 VOI 09

Religion: Larani (21 PP)
Left-Handed

Condition 65 Longbow 96
Dodge 90 Falchion 79
Initiative 84 Spear 82
Mobility 70 Roundshield 80
Unarmed 62 Mechanics 43
Awareness 72 Mining 38
Intrigue 56 Survival 49
Ritual 18 Foraging 52
Hârníc 65 Heraldry 38
Physician 24

**Herald
Evedezdan of Pordaen (m)**

HGT 70" WGT 178LBS FRM HEAVY
CMX MEDIUM EYES GREEN HAIR BLONDE

BIRTH 04/04/693 (AHNU-FENIRI)

STR 16 INT 12 EYE 14
END 17 AUR 15 HRG 13
DEX 16 WIL 16 SML 13
AGL 13 MOR 11 TOU 14
SPD 12 COM 10 VOI 16

Religion: Larani (21 PP)

Condition 85 Staff 76
Dodge 84 Longknife 87
Initiative 76 Keltan 79
Mobility 70 Riding 45
Unarmed 75 Heraldry 76
Awareness 62 Oratory 67
Intrigue 72 Rhetoric 84
Ritual 25 Drawing 42
Hârníc 85 Lyre 48
Emela 67 Lakise/sc 83

**Pilot/Harbourmaster
Giuef of Antarin (m)**

HGT 68" WGT 138 LBS FRM AVG.
CMX MEDIUM EYES GREY HAIR BLACK

BIRTH 06/12/673 (LADO)

STR 11 INT 15 EYE 14
END 15 AUR 08 HRG 15
DEX 11 WIL 14 SML 15
AGL 14 MOR 11 TOU 14
SPD 16 COM 16 VOI 07

Religion: Sarajin (19 PP)
Ambidextrous

Condition 75 Piloting 89
Dodge 70 Cartography 62
Initiative 76 Seamanship 81
Mobility 80 Weatherlore 85
Unarmed 48 Shipwright 36
Awareness 60 Mathematics 78
Intrigue 45 Shorkana 77
Ritual 16 Knife 56
Hârníc 74 Metalcraft 42
Orbaleese 74 Rhetoric 61
Lakise/sc 85 Runic/sc 85

**Innkeeper/Lia-Kavair
Erehas of Bathnol (m)**

HGT 72" WGT 188LBS FRM HEAVY
CMX MEDIUM EYES BROWN HAIR BROWN

BIRTH 21/08/677 (TARAEI)

STR 12 INT 14 EYE 15
END 11 AUR 11 HRG 12
DEX 13 WIL 14 SML 13
AGL 10 MOR 08 TOU 17
SPD 12 COM 11 VOI 14

Religion: Naveh (17 PP)
Genetic Throwback
(abnormal hirsuteness)

Condition 60 Spear 69
Dodge 73 Roundshield 68
Initiative 65 Club 76
Mobility 66 Taburi 87
Unarmed 76 Legerdemain 76
Awareness 73 Stealth 68
Intrigue 72 Jumping 44
Ritual 15 Climbing 48
Hârníc 71 Lockcraft 17
Jarinese 34 Brewing 66
Rhetoric 60 Cookery 62

**Litigant
Tibeden of Habefus (m)**

HGT 62" WGT 117LBS FRM LIGHT.
CMX MEDIUM EYES BROWN HAIR BROWN

BIRTH 19/09/685 (TAI)

STR 11 INT 16 EYE 15
END 12 AUR 15 HRG 11
DEX 10 WIL 15 SML 15
AGL 14 MOR 13 TOU 09
SPD 12 COM 15 VOI 16

Religion: Save-K'nor (16 PP)
Allergy: Magic [07]

Condition 60 Poleaxe 58
Dodge 70 Roundshield 52
Initiative 63 Law 80
Mobility 60 Oratory 64
Unarmed 36 Rhetoric 85
Awareness 56 Folklore 39
Intrigue 80 Agriculture 13
Ritual 16 Khuzan 26
Hârníc 66 Lakise/sc 87

**Yeoman (LH)
Evelion of Kaehte (m)**

HGT 68" WGT 153LBS FRM AVERAGE
CMX FAIR EYES GREY HAIR RED

BIRTH 07/06/672 (NADAI-ANG.)

STR 13 INT 15 EYE 14
END 16 AUR 16 HRG 12
DEX 13 WIL 15 SML 11
AGL 12 MOR 11 TOU 12
SPD 11 COM 11 VOI 15

Religion: Peoni (16 PP)
Left-Handed
Claustrophobia [10]

Condition 00 Riding 72
Dodge 76 Spear 79
Initiative 87 Roundshield 89
Mobility 55 Shortsword 81
Unarmed 79 Physician 33
Awareness 58 Survival 62
Intrigue 45 Foraging 49
Ritual 15 Horsecraft 44
Hârníc 65 Agriculture 58
Prescience 16

**Ebasethe (Peonian Priest)
Leinri of Unriaion (m)**

HGT 63" WGT 146LBS FRM HEAVY
CMX MEDIUM EYES GREY HAIR BLONDE

BIRTH 05/11/663 (MASARA)

STR 16 INT 12 EYE 17
END 12 AUR 11 HRG 16
DEX 12 WIL 13 SML 14
AGL 14 MOR 11 TOU 14
SPD 12 COM 13 VOI 16

Religion: Peoni (68 PP)
Alcoholism [13]

Condition 60 Singing 51
Dodge 70 Lakise/sc 81
Initiative 63 Herblore 33
Mobility 60 Physician 45
Unarmed 48 Agriculture 48
Awareness 74 Brewing 65
Intrigue 69
Ritual 65 Khruni/sc 81
Hârníc 84 Emela 51
Rhetoric 62 Oratorv 79

**Clothier (Guildmaster)
Levur of Damintha (m)**

HGT 71" WGT 167LBS FRM AVERAGE
CMX MEDIUM EYES BLUE HAIR BLACK

BIRTH 09/04/669 (AHNU)

STR 13 INT 15 EYE 18
END 17 AUR 12 HRG 15
DEX 15 WIL 16 SML 10
AGL 15 MOR 13 TOU 17
SPD 11 COM 14 VOI 16

Religion: Peoni (19 PP)
Recessive Traits(hemophilia)

Condition 80 Spear 58
Dodge 75 Roundshield 58
Initiative 74 Shortsword 43
Mobility 55 Mathematics 36
Unarmed 42 Textilecraft 68
Awareness 56 Hideworking 42
Intrigue 82 Alchemy 28
Rhetoric 74 Oratory 62
Ritual 16 Juwelcraft 34
Hârníc 76 Lakise/sc 82

**Chandler
Kadas of Roban (m)**

HGT 70" WGT 146LBS FRM AVERAGE
CMX MEDIUM EYES BROWN HAIR BROWN

BIRTH 13/08/692 (TARAE)

STR 17 INT 12 EYE 15
END 12 AUR 12 HRG 11
DEX 15 WIL 11 SML 15
AGL 14 MOR 10 TOU 14
SPD 09 COM 11 VOI 16

Religion: Peoni (08 PP)
Genetic Throwback
(protruding brow)

Condition 70 Spear 64
Dodge 70 Roundshield 64
Initiative 71 Dagger 60
Mobility 75 Glaive-Bill 48
Unarmed 45 Metalcraft 30
Awareness 64 Brewing 15
Intrigue 39 Alchemy 26
Ritual 16 Glassworking 45
Hârníc 61 Herblore 42
Lakise/sc 83 Agriculture 45
Pigcraft 42 Falconcraft 28
Ceramics 42 Weatherlore 16

**Mercantylor
Heehfam of Gaminnia (m)**

HGT 71" WGT 150LBS FRM LIGHT
CMX MEDIUM EYES BROWN HAIR BROWN

BIRTH 22/02/693 (ARALIUS)

STR 11 INT 09 EYE 11
END 10 AUR 10 HRG 12
DEX 18 WIL 11 SML 09
AGL 14 MOR 11 TOU 10
SPD 08 COM 13 VOI 11

Religion: Halea (14 PP)

Condition 50 Shortsword 72
Dodge 70 Roundshield 67
Initiative 68 Mace 68
Mobility 50 Oratory 26
Unarmed 42 Rhetoric 65
Awareness 56 Mathematics 42
Intrigue 52
Ritual 00
Hârníc 73 Lakise/sc 83
Orbaalese 33 Trierzi 33

**Villein/Reeve
Initel of Revtel (m)**

HGT 69" WGT 157LBS FRM AVERAGE
CMX DARK EYES BROWN HAIR BROWN

BIRTH 04/02/662 (ARA.-ULA.)

STR 14 INT 13 EYE 10
END 12 AUR 12 HRG 13
DEX 07 WIL 14 SML 13
AGL 12 MOR 11 TOU 13
SPD 13 COM 14 VOI 15

Religion: Peoni (24 PP)

Condition 65 Folklore 78
Dodge 60 Law 53
Initiative 65 Agriculture 93
Mobility 65 Weatherlore 68
Unarmed 52 Sheepcraft 67
Awareness 00 Dogcraft 57
Intrigue 39 Cattlecraft 76
Ritual 14 Oratory 54
Hârníc 64 Rhetoric 64

Manor Data Tables

MANOR INFORMATION

GENERAL DATA

Manor name	Edino
Held by	Sir Crasel of Avandar
Liege	King Andasin IV
Hundred	Dunzael
Shire	Daenshire
Country	Kingdom of Kanday

Topography

Flat Meadows

ACREAGE

ACRES

%

Gross Acres	2030	100,0%
Woods	205	10,1%
Cleared	1825	89,9%
Tenant	1814	89,4%
Demesne	11	0,5%
Waste (part of demesne)	10	0,5%

HOUSEHOLDS

#

%

Serf	38	51,4%
Farmer	11	14,9%
Craftsman	20	27,0%
Yeoman	4	5,4%
Priest	1	1,4%
Slave	0	0,0%
TOTAL	74	

FIEF DATA

Total Population	487
Fief Income	127.773 d
Lord's Privy Purse	17.932 d
Lifestyle	Lavish

Land Quality

0.94

Fief Index

1.00

Trade Index

1.20

LABOR

DAYS

Labor pool	36.500 days
Labor obligation	2.768 days
Labor Priests	0 days
Labor required(total)	21.457 days
Labor required(demesne)	8 days
Labor shortfall	-2.760 days

MANOR BUDGET

Land Quality	0.94
Fief Index	1.00
Climate HR-Modifier	+05
Weather Index	1.00
Trade Index	1.20

FIEF BUDGET		ACRES	LABOR	KIND
Woods	10,10%	205	1.00	
Worked Woods	9,85%	200	600	3.384,0 d
Crops	0.5	915	5307	53.068,2 d
Pasture	0.49	900	10075	81.838,8 d
Waste		10		
TOTAL HARVEST			15982	138.291 d
Seed Purchased		0	0.90	
- stored		0		0,0 d
Winter Feed		0	0.90	
- stored		0		0,0 d
Fief Maintenance		100%	5475	-10.950,0 d
Assart	3%	6		
- by Timberwrigth (w stumps)		6		432,0 d
- by Timberwright (w/o stumps)		0	0	0,0 d
- by Peasantry		0	0	0,0 d
- by Peasantry (clear new only)		0	0	
FIEF INCOME			21457	127.773 d

LORD'S BUDGET			KIND
Demesne income	1		70,0 d
Tenant Rents & Fees			14.953,0 d
Glebe Revenue	100		7.535,0 d
Taxes & Tolls	10		2.880,0 d
Amercements	7	1.00	2.590,0 d
Apanages			7.200,0 d
Feudal Income			244.470,0 d
TOTAL INCOME			279.698 d
Household			144.088,0 d
Feudal Payments		VM	101.610,0 d
Tithe		4.29%	12.000,0 d
Labor Hired		1.00	8,0 d
Political Expenses		5.00	10.150,0 d
TOTAL EXPENSES			267.856 d

LIFESTYLE	Lavish	£ 1116
-----------	--------	--------

PRIVY PURSE	11.842 d
-------------	----------

CROPS AND LIVESTOCK

CROP TYPE	MIX	RS	HR	YIELD	ACRES	LABOR	KIND
Rye	10%	1.00	+15	42,3 d	91,5	458	3.870,5 d
Barley	0%	1.00	+25	45,1 d	0,0	0	0,0 d
Oats	20%	1.00	+20	39,5 d	183,0	915	7.224,8 d
Hay	20%	1.00	+25	37,6 d	183,0	915	6.880,8 d
Vegetables	0%	1.00	+05	75,2 d	0,0	0	0,0 d
Flax	10%	1.00	-05	62,0 d	91,5	549	5.676,7 d
Wheat	10%	1.00	-15	67,7 d	91,5	549	6.192,7 d
Fruit	30%	1.00	-25	84,6 d	274,5	1922	23.222,7 d
TOTAL/AVG	1	1.00		58,0 d	10,0 d	5307	53.068,2 d

LIVESTOCK	MIX	HS	HR	YIELD	ACRES	LABOR	KIND
Oxen	20%	1.00	0	122,2 d	175,0	1487.5	10.692,5 d
Cows	20%	1.00	- 5	176,7 d	175,0	1750	15.463,0 d
Goats	10%	1.00	+10	37,6 d	87,5	875	6.580,0 d
Sheep	30%	1.00	- 10	31,0 d	262,5	2362.5	24.428,3 d
Swine	20%	1.00	+5	14,1 d	175,0	3500	24.675,0 d
Horses		1.00	+5	0,0 d	25,0	100	0,0 d
TOTAL/AVG	1	1.00		90,9 d	8,1 d	10075	81.838,8 d

HEAD COUNT	HEAD	
	SUM	WIN
Oxen	88	88
Cows	88	44
Goats	175	58
Sheep	788	315
Swine	1750	175
Horses	25	25
TOTAL	2913	705

WEATHER TABLE	
Kelen	1.00
Nolus	1.00
Larane	1.00
Agrazhar	1.00
Azura	1.00

TOWN CENSUS

ID	TENANT	C	O	NAME	CLAN	HD SIZE	ADULT M	CHILDREN F	8-12	(f)	0-7	(f)	ML	SERF	ACRES FREE	KIND LABOR	RENT	FEES	LIC.
1	Caer Edino					0	-	-	-	-	-	-				0	0 d	0 d	
2	Edino Haven	F		Giuef	Antarin	7	5	1	-	-	-	1				0	60 d	6 d	
3	Ostler	C		Inehais	Banmin	7	3	2	2	-	-	-	95		15	0	150 d	21 d	216 d
4	Miller	C		Zedeer	Arlana	7	3	-	1	1	1	1	95		15	0	150 d	21 d	240 d
5	Tollhouse					0	-	-	-	-	-	-				0	0 d	0 d	
6	Mercantylor	C		Opvtan	Elnarind	4	1	2	-	1	-	-	70		0	0	60 d	6 d	216 d
7	Half-Villein	S		Revanna	Aranmin	4	-	3	-	1	-	-	90	15		60	60 d	21 d	
8	Potter	C		Tedion	Futarrina	3	2	-	1	-	-	-	60		20	0	180 d	26 d	144 d
9	Basket-Maker	C		Nimsidim	Caminira	4	-	3	-	1	-	-	95		20	0	180 d	26 d	144 d
10	Apothecary	C		Gemakais	Fuimnia	5	3	1	-	-	1	-	65		15	0	150 d	21 d	216 d
11	Half-Villein	S		Diehel	Dafinila	6	2	1	-	1	1	1	105	17		68	60 d	23 d	
12	Villein	S		Ridef	Aleniel	3	1	1	-	-	1	-	70	33	30	132	240 d	69 d	
13	Villein	S	H	Faufus	Cenion	5	2	3	-	-	-	-	65	36	10	0	120 d	52 d	
14	Cottar	S		Duitel	Arffian	4	1	2	1	-	-	-	65	2		8	60 d	8 d	
15	Villein	S		Linraina	Ardommol	5	-	1	2	1	1	-	65	29	20	116	180 d	55 d	
16	Tavern/Brothel	C		Erehas	Bathnol	10	2	4	1	1	1	1	45		30	0	240 d	36 d	216 d
17	Litigant	C		Tibeden	Habefus	2	2	-	-	-	-	-	80		0	0	60 d	6 d	
18	Villein/Apiarist	S		Khemakfus	Revtel	8	2	2	1	1	1	1	110	29	20	116	180 d	55 d	
19	Cottar	S		Hedf	Dolaidin	1	1	-	-	-	-	-	70	0		0	60 d	6 d	
20	Villein	S		Dasaeam	Eveehais	6	-	3	1	-	-	2	80	21		84	60 d	27 d	
21	Half-Villein	S		Emakfus	Fakief	6	2	2	-	1	-	1	60	14		56	60 d	20 d	
22	Physician	C		Feeael	Isver	3	2	-	-	-	1	-	80		15	0	150 d	21 d	216 d
23	Cottar	S		Tidfus	Inattel	5	2	3	-	-	-	-	85	2		8	60 d	8 d	
24	Innkeeper/Ostler	C		Aehetel	Evedert	11	4	5	-	1	1	-	85		5	0	90 d	11 d	432 d
25	Villein	S		Iliri	Khadazrt	7	1	3	1	1	1	-	105	31		124	60 d	37 d	
26	Half-Villein	S		Uvufam	Gieaur	5	1	1	1	1	1	-	85	18		72	60 d	24 d	
27	Farmer	F		Uviri	Anehur	6	3	2	1	-	-	-	80		40	0	300 d	46 d	
28	Villein	S		Erute	Erute	5	4	1	-	-	-	-	60	31	30	124	240 d	67 d	
29	Cottar	S		Lomifus	Dolaidin	4	1	1	1	-	-	1	95	2		8	60 d	8 d	
30	Half-Villein	S		Lalite	Ereadan	5	1	1	1	-	1	1	60	14		56	60 d	20 d	
31	Farmer	F		Udzazrt	Lakiard	5	1	1	1	-	-	2	95		30	0	240 d	36 d	
32	Villein	S		Giinol	Mabetel	8	1	3	2	1	-	1	90	37		148	60 d	43 d	
33	Yeoman (LH)	Y		Evelion	Kaehte	7	2	2	1	2	-	-	80		67	0	127 d	73 d	
34	Villein	S		Alatik	Revtel	6	2	2	-	1	1	-	90	21		84	60 d	27 d	
35	Villein	S		Emakas	Erute	8	2	2	2	-	2	-	65	34		136	60 d	40 d	
36	Metalsmith	C		Ineael	Loatte	7	3	1	1	-	1	1	75		5	0	90 d	11 d	144 d
37	Half-Villein	S		Reheel	Alufam	4	2	1	-	1	-	-	70	16		64	60 d	22 d	
38	Half-Villein	S		Javia	Revtel	2	-	1	-	-	-	1	95	14		56	60 d	20 d	
39	Villein	S		Reatf	Featrt	4	1	-	1	-	-	2	75	29		116	60 d	35 d	
40	Farmer	F		Laiulm	Albeot	5	1	2	-	1	-	1	60		45	0	330 d	51 d	
41	Farmer	F		Khaur	Gerte	7	2	2	1	1	-	1	75		30	0	240 d	36 d	
42	Villein	S		Famiain	Blaiden	6	3	1	-	-	1	1	65	25		100	60 d	31 d	
43	Farmer	F		Rimion	Blaiden	5	2	2	1	-	-	-	80		70	0	480 d	76 d	
44	Cottar	S		Lomief	Erromin	4	2	-	1	-	-	1	85	0		0	60 d	6 d	
45	Cottar	S		Opdol	Lelandil	3	1	-	-	1	-	1	90	5		20	60 d	11 d	
46	Farmer	F		Keheer	Unfidil	7	3	2	-	1	-	1	70		40	0	300 d	46 d	
47	Villein	S		Rydezain	Ellanmin	4	3	1	-	-	-	-	100	27		108	60 d	33 d	
48	Teamster	C		Gideulm	Ladumin	6	3	1	-	2	-	-	75		20	0	180 d	26 d	144 d
49	Woodcrafter	C		Diatri	Linarhin	4	2	1	-	-	1	-	75		5	0	90 d	11 d	120 d
50	Clothier	C		Levur	Damintha	9	2	4	1	-	2	-	85		0	0	60 d	6 d	216 d
51	Villein	S	R	Initel	Revtel	6	2	2	-	1	1	-	90	38		0	60 d	44 d	
52	Temple of Peon	P		Leinri	Unriaion	8	4	-	1	1	1	1	70		100	0	0 d	0 d	
53	Cottar/Fisher	S		Lemaot	Amdardin	3	2	1	-	-	-	-	85	5		20	60 d	11 d	24 d
54	Chandler	C		Kadas	Roban	5	3	1	1	-	-	-	80		0	0	60 d	6 d	216 d
55	Villein	S		Dalier	Erute	9	2	3	-	1	1	2	55	30		120	60 d	36 d	
56	Villein	S		Tebeol	Dolaidin	7	2	3	1	1	-	-	65	25		100	60 d	31 d	
57	Farmer	F		Uwais	Afindin	6	1	3	-	1	1	-	70		35	0	270 d	41 d	
58	Salter	C		Himakulm	Daduiel	8	4	2	1	-	1	-	80		15	0	150 d	21 d	120 d
59	Villein/Apiarist	S		Givais	Bastdel	2	1	-	1	-	-	-	100	29		116	60 d	35 d	
60	Villein	S		Esatri	Alain	5	1	2	1	-	1	-	90	37		148	60 d	43 d	
61	Farmer	F		Fannea	Kaehte	4	-	1	1	-	1	1	95		50	0	360 d	56 d	
62	Cottar	S		Hekitel	Celendan	4	1	-	-	-	-	3	45	0		0	60 d	6 d	
63	Hall of the Mangai					0	-	-	-	-	-	-				0	0 d	0 d	
64	Mercantylor	C		Heehfam	Gaminnia	7	2	3	1	-	1	-	70		10	0	120 d	16 d	216 d
65	Farmer	F		Gaeart	Gaminara	5	3	1	-	-	1	-	90		70	0	480 d	76 d	
66	Farmer	F		Daana	Blaiden	2	-	2	-	-	-	-	70		25	0	210 d	31 d	
67	Yeoman (LF)	Y		Ildeim	Leornia	6	1	2	1	1	1	-	65		20	0	80 d	26 d	
68	Yeoman (LF)	Y		Uvmaur	Daimion	5	2	2	-	-	1	-	75		19	0	79 d	25 d	
69	Villein	S		Lanfada	Revtel	3	-	1	-	1	1	-	50	33		132	60 d	39 d	
70	Half-Villein	S		Kadon	Kaehte	5	1	2	-	-	2	-	95	16		64	60 d	22 d	
71	Yeoman (LH)	Y		Reehf	Amdarian	5	1	1	-	2	-	1	70		65	0	125 d	71 d	
72	Half-Villein	S		Gemirt	Erute	6	2	1	1	-	2	-	75	20		80	60 d	26 d	
73	Ropemaker	C		Kerik	Unfidil	4	2	1	-	-	1	-	80		20	0	180 d	26 d	144 d
74	Cottar	S	B	Gevr	Dolaidin	3	1	1	-	-	-	1	55	2		0	60 d	8 d	
75	Woodcrafter	C		Ilasthan	Eraniel	6	3	-	1	-	-	2	85		10	0	120 d	16 d	
76	Villein	S		Osheais	Sinarril	7	3	1	-	1	2	-	75	31		124	60 d	37 d	
77	Timberwright	C	W	Obbert	Fufiara	5	2	1	-	1	1	-	60		10	0	120 d	16 d	216 d

VASSAL FIEFS

FIEF NAME	HELD BY	TYPE	LQ	FI	ACRES	INCOME	OWES
Buniryne	Moultey	VM	1.00	1.00	2030	73.080 d	6.090 d
Daleton	B/H Dunzael	B	1.00	1.00	1930	69.480 d	23.160 d
Dunzael	B/H Dunzael	B	1.00	1.00	1840	66.240 d	22.080 d
Gemela	Delourne	VM	1.00	1.00	1920	69.120 d	5.760 d
Gibrale	Yolavaen	VM	1.00	1.00	1750	63.000 d	5.250 d
Hostu	B/H Teba	B	1.00	1.00	1940	69.840 d	23.280 d
Boren	B/H Teba	B	1.00	1.00	1570	56.520 d	18.840 d
Incella	Barayn	VM	1.00	1.00	1940	69.840 d	5.820 d
Jocun	Jocun	VM	1.00	1.00	1870	67.320 d	5.610 d
Jubas	B/H Kandis	B	1.00	1.00	1850	66.600 d	22.200 d
Libost	Avandar	B	1.00	1.00	2190	78.840 d	26.280 d
Paku	Avandar	VM	1.00	1.00	1590	57.240 d	4.770 d
Murelno	Murel	VM	1.00	1.00	2250	81.000 d	6.750 d
Notu	Domanler	VM	1.00	1.00	1940	69.840 d	5.820 d
Ruta	Bailiff	B	1.00	1.00	1690	60.840 d	20.280 d
Shyndaer	Bailiff	B	1.00	1.00	1710	61.560 d	20.520 d
Viberyne	Bailiff	B	1.00	1.00	1830	65.880 d	21.960 d
TOTAL					31840		244.470 d

LORD'S HOUSEHOLD

NAME	OCCUPATION	ML	EACH	#	TOTAL	LOY.
Sheriff Sir Crasel of Avandar (m48)	Fiefholder	90	3.000 d	1	3.000 d	100
Lady Jadael of Kandry (f33)	Spouse	70	2.000 d	1	2.000 d	86
Albeim of Avandar (m13)	Offspring					
Fadezr of Avandar (m8)						
Ilmaka of Avandar (f3)		75	1.000 d	3	3.000 d	94
Lasyr of Avandar (f64)	Relatives					
Ladoel of Demoun (f62)						
Medot of Avandar (m66)		80	1.500 d	3	4.500 d	83
Ovdedan of Kandry (m17)	Squire					
Gaeael of Moultey (m19)						
Obeaden of Barayn (m19)		75	1.200 d	4	4.800 d	61
Akdden of Fandael (m18)	Bailiff	100	2.000 d	1	2.000 d	85
Girte of Avandar (m48)	Steward	85	2.000 d	1	2.000 d	74
Dideol of Kandry (m27)	Chamberlain	70	800 d	1	800 d	74
Maremal of Unfidil (m44)	Cook	90	500 d	1	500 d	70
Osadel of Blaiden (m40)	Baker		400 d		0 d	
	Alewife	95	400 d	1	400 d	67
Samael of Albeot (f37)	Cellarer		500 d		0 d	
	Gardener		400 d		0 d	
Paloo of Revtel (f40)	Nursemaid	80	400 d	1	400 d	68
(diverse)	Domestics	75	300 d	30	9.000 d	68
Akdeol of Darud (m43)	Clothier	80	900 d	1	900 d	72
Obrden of Zarel (m26)	Harper	85	600 d	1	600 d	64
Evedezdan of Pordaen (m27)	Herald	70	1.500 d	1	1.500 d	65
Ramafa of Sarin (f31)	Litigant	83	1.100 d	1	1.100 d	66
	Mason		1.500 d		0 d	61
Lakin of Banmin (m41)	Ostler	70	1.300 d	1	1.300 d	71
	Physician		1.200 d		0 d	
Safolaen of Millard (m27)	Priest	65	1.500 d	1	1.500 d	74
	Sage / Tutor		1.200 d		0 d	
Liias of Kadel (m29)	Scribe	65	800 d	2	1.600 d	72
Ovdefus of Tebret (m27)	Teamster		900 d		0 d	
Radeim of Taveld (m34)	Weaponcrafter	105	1.800 d	1	1.800 d	67
	Hideworker		900 d		0 d	
	Metalsmith		1.100 d		0 d	
	Salter		700 d		0 d	
	Timberwright		1.200 d		0 d	
	Woodcrafter		1.000 d		0 d	
	Archbishop		5.000 d		0 d	
	Bishop		3.000 d		0 d	
	High Priest		1.500 d		0 d	
	Priest		800 d		0 d	
	Acolyte		400 d		0 d	
m m m m m	Man-at-arms (LF)	80	576 d	9	5.184 d	62
m m m	Sergeant-at-arms (MF)	95	936 d	2	1.872 d	66
Kakitel of Daimion (m41)	Shortbow (SB)		936 d		0 d	
Ramafam of Afindin (f36)	Longbow (LB)					
		75	1.296 d	9	11.664 d	71
Esattel of Daimion (m36)	Huntsman (LH)					
Diinrt of Anehur (m29)						
Gainais of Unriaion (m34)						
Heatdan of Kafeld (m36)	Huntsman (LH)	100	2.016 d	5	10.080 d	61
Khaatulm of Pagen (m44)						
Ermaais of Arfian (m25)						
Enber of Khadazrt (m51)	Medium Horse (MH)					
Tabefus of Avandar (m24)						
Medazais of Bazyd (m36)						
Gedazte of Vahem (m39)	Household Knight (HH)	110	3.200 d	15	48.000 d	69
Sir Jameleth of Avandar (m37)		55	4.608 d	1	4.608 d	86
	Kennels		600 d	1	600 d	
	Falconry		800 d	1	800 d	
	Palfreys		900 d	15	13.500 d	
	Warhorses		1.800 d	10	18.000 d	
TOTAL:				98	157.008 d	