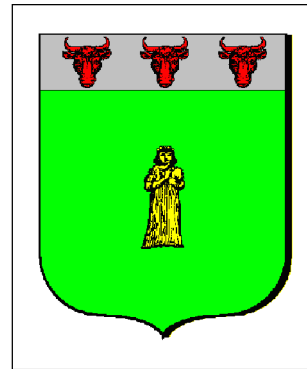


LOCATION: Dyrien Hundred,
Erynashire,
Kingdom of Kandy
STATUS: Clerical Fief
Liege: Sulaplyn of Aleath
GOVERNMENT: Pelnala
(Order of The Balm of Joy)
POPULATION: 392 (65 households)

History

The earliest settlement was founded as a hamlet within a clearing of the woods on the eastern bank of the Eryn and was named Kandar by its inhabitants. Due to its naturally mild micro climate, it grew steadily and prospered. During the fourth century TR, a peonian Reslava (mendicant) called Chantael settled down near foot of the hills. She was a competent healer and became popular with the local peasantry, who regularly visited her hermitage in small groups for treatment of their ailments and listening her preaching the lore of the gentle goddess of life. One day, Chantael's hut was found burned and pillaged without a sign of the Reslava. An extended search revealed Chantael's earthly remains, raped and ritually mutilated within the wood. The peasants' woe and grieve was deep, and they interred Chantael's corpse in a grave near her former hermitage. When a group of three agrikan missionaries came to Kandar later that year, rumors accused them of having murdered Chantael and calls for revenge became loud. A mob of enraged peasants followed the missionaries' trail into the wood and captured them within their camp. When they started to lynch them by drowning them in a stream, a load moo was heard and a large golden oxen trotted down to the stream, accompanied by a woman looking like Chantael. Realizing the unearthly gleam of both figures, the peasants drew back, leaving their prisoners back at the stream. Chantael approached the three man with a kind smile, taking their hands and leading them back into the



ARMS OF THE PELNALA OF CHANTAER:

*"VERT, IN A CHIEF ARGENT THREE BULL HEADS GULES, STE.
CHANTAEL OR GARLANDED GREEN AND ARGENT."*

woods, following the golden oxen, where they all suddenly disappeared. Peace and forgiveness came to the hearts of all witnesses.

Realizing what had happened, the peasants started to praise Peoni for her miracle. A shrine was built at that location, which finally became the heart of a new hamlet that was called Maermel. Later, persons visiting Chantael's grave reported of miraculous healings and another shrine was build above the Reslava's grave.

When word of the miracles came to the Sulaplyn (Peonian bishop) at Aleath, three ebasethe were sent to investigate. As the final result, Chantael was canonized within only three years of her martyrdom. A chapel was constructed to replace the older shrine and a hospital run by the Order of the Balm of Joy was added to cope with the increasing stream of pilgrims. Thus, a cloister emerged from the former hermitage.

During the Theocracy of Tekhos, the cloister was ravaged and desecrated by the Morgathians, though the relics of Saint Chantael were saved.

After the fall of the Theocracy, Chantael was enfeoffed to the Sulaplyn (bishop) by the king who passed the manor back to the

Order of the Balm of Joy and personally exorcised and consecrated the new built crypt. Tales of miraculous healings at St. Chantael's grave gave motivation for countless volunteers to support the cloisters' reconstruction, and so the new nunnery soon surpassed its predecessor in size, fame and importance.

Today, Chantaer is the largest clerical estate of the church of Peoni on the Hârníc Isles. It supports not only Chantaer Nunnery, one of Hârn's largest cloisters, but also obtains substantial surpluses that are passed to the Sulaplyn (Bishop) of western Hârn in the nearby city of Aleath.

Still, thousands of Peonians pilgrim to Chantaer year for year from all over western Hârn. They come to either find relieve to physical illnesses or to obtain indulgence from their sins. Most of them come to visit the grave of Ste. Chantael and hold several days of fasting and praying at the temple. Many stay for at last a tenday to donate their labor to the temple and thus to the goddess – for most of them, this is all they can give. Few of the pilgrims pass the „Reslava-kai-Peledaur“ and take on the duty of leaving the cloister as a Reslava (Peonian mendicant).

The cloister receives substantial profits from the pilgrims, first by the labor provides by the ordinary pilgrims, second by the skills of pious craftsmen and third by the generous donations of noble adherents, usually made in kind, but often also in silver.

Government

Chantaer is ruled by the Pelnala (abbess) of Chantaer Nunnery. At the moment, the office is held by Alobia Seben (her brother is Daffyd Seben, Baron of Findumon).

As usual with peonian monasteries, a unit of Iaranian knights guards the defenseless peonian nuns. The guard is under the command of Sir Hevel of Jocun who acts in

The Pelnala of Chantaer have always been business-minded, a rather strange trait found with Peonian priests. This lead to several disputes with the more traditional members of the church hierarchy, but up to present days, these disputes were always settled in favor of Chantaer due to the cloister's ability to support dozens of poor temples throughout the land and the church's need to support its subdued adherents in Rethem.

The present Pelnala, Alobia of Rivaller, strongly supports the petition to create a western Hârníc Primacy. If the Council of the Pelclunia grants the petition, Chantaer is among the first of candidates for the new Primate's official seat. Though, the untraditional manner to operate the church estate business-like, might give an interesting point to the discussion whom to appoint to the office of western Hârníc Primate.

It is interesting, that all three Peonian church estates lie within several leagues. Duseda, the second nunnery of the Balm of Joy, is known for its strict traditional Peonian theology. Forute, centered within the wilderness of the western Kandian woodland and lead by the male Irreproachable Order, is known for its monks' skill in colonization and its latent conflict with the feudal system by supporting runaway serfs and criminals.

charge to the Reblena (commander) of Flaru and consists of three Melana (Iaranian knights) and 7 Meken (Iaranian soldiers). This guard also assists the Pelnala in the enforcement of law and order. Four yeoman and the militia complete the military forces of Chantaer.

The peonian temples within the hamlets play an important role in daily life, as the priestesses take over the major parts of the responsibilities of the traditional tenant offices. They decide what and where to plant and graze. The reeve acts as a kind of spokesman for all serfs. His advice is usually heard, but not seldom ignored. There is a beadle in each hamlet, who assists the local

ebasethe in the enforcement of his/ her orders.

This practice had resulted in occasionally rebellions during the first decades of the abbey, but since then, the peonians' management has resulted in a rather good and secure situation – harvests are above average and famines are seldom – for the tenants and is now fairly accepted.

Economics

Chantaer is parted into three settlements: Chantaer Nunnery and two hamlets, Kandar and Maermel. Chantaer is the political and economic center of the fief. Kandar hamlet, centered in the agricultural lands and seat of the majority of free craftsmen, is also an important economic factor. Finally, Maermel hamlet, located near the edge of the eastern woods, is a base for hunting and forestry.

Agriculture, Fishing, Forestry

Nearly all work throughout the fief is planned and overseen by the peonian priestesses or acolytes. Due to this policy, the infrastructure of Chantaer is excellent: The ways, bridges, hedges and fences are held in constant repair; provisions are kept relatively secure from pests and in sufficient quantities; transports are organized and carried out by bonded teamsters. Most of the nunnery's priests and acolytes work on the fields, the orchards and gardens, others work in the hospital or the workshops. They are living examples for the local peasantry.

The nuns' expertise and the mild climate at the foots of the hills allow to grow sensitive fruits and vegetables. Chantaer is famed for the cultivation of fruits, especially apples, pears and peaches. Since their transport is problematically, these crops must be conserved to achieve good prices on the far off markets. This is done in the nunnery by each hamlet's residential clergy and by a freemaster salter. Beehives are

regularly found near the extensive orchards of Chantaer; the apiarists have a rich harvest of wax and honey. The first is used within the nunnery and sold in large quantities, the latter is almost completely used for conservation and brewing. The nunnery's medicinal garden is a source of valuable drugs and treated herbs and prepared healing potions are sent to other peonian temples.

The lush pastures in the eastern hills are used to graze the nunnery's sheep.

As there is no major inshore water throughout the fief, fishery is limited to minor streams and ponds.

As usual, the surrounding forests are used to graze pigs and to harvest wood for construction, tools and fuel. The nunnery's Lerovana (Mistress of Healing) and her acolytes regularly search the surroundings for medicinal and esoteric plants.

Crafts

Chantaer is famed for the its apple wine and for distilling one of Hârn's best alcoholic spirits, an aged apple brandy called „Chantaer“. The recipe of the production is jealously guarded by Chantaer's Cellerars, two Ebasethe who are dedicated to brewing and the production of wines, brandies and vinegar. A bonded innkeeper acts as an intermediate in selling the beverages.

A charcoaler operates his business from Maermel and meets the demands of the local craftsmen and the nunnery's distillery. He sells the surpluses of his production to roaming merchants and craftsmen of nearby fiefs.

In the late summer and autumn the salter at Kandar is busy with pickling vegetables and fruit, throughout the rest of the year, he produces a mild cheese.

Two bonded clothiers oversee the production of linen and wool cloth within the nunnery's workshops.

The hideworker at Maermel treats hides and pelts and produces all demanded leather wares.

Two woodcrafters (each one free and bonded master) meet as well the population's usual demands, as the nunnery's special demand for kegs, barrels and hogsheads for the shipment of the abbey's liquid products.

The local metalsmith strongly benefits from selling holy symbols and pilgrim's badges to the pilgrims.

The abbey's steeds are cared for by a bonded ostler.

There is an old dispute with the Millers' Guild, as the guild has repeatedly petitioned the Pelnala to sell the abbey mill to the Millers' Guild, but the Pelnala has yet refused this to keep independent of the guild and using the service of a bonded miller. The guild has not only pressed the

miller, but also tried to convince the Sulaplyn (bishop) of Aleath to interfere, but without success. Since the nunnery is strongly guarded by knights of the Checkered Shield, the Millers' have yet not dared to seize the grindstones, as they occasionally did elsewhere in western Hârn.

Trade

Though it is five leagues to the nearest road, there is a relative large amount of traffic to and from Chantaer. Pilgrims travel from far off by foot to see the temple's relics and painted windows, sick are driven by the hope for cure in the hospital and devoted peonians seek to stay within the abbey as Esolani (novices) or in desire to celebrate the Reslava-kai Peledaur and become an Reslava (mendicant).

The abbey transports large amounts of its surpluses on own wagons and carts to the temples and markets of Aleath and other settlements. They also directly support other nearby temples in kind. Merchants travel to Chantaer to obtain the famous Chantaer brandy, fruit wines and pickles. The abbey is in demand of ink, paper and parchment; the crafts need salt and raw metals.

The inn at Kandar caters to both, the pilgrims and the traders.

Taxes

MERCHET: 6%

HERIOT: best animal of the deceased

Religion

Besides the abbey, there is a peonian temple with at least an ebasethe and one to three acolytes in each hamlet.

A single chapel of Larani is located within the laranian Guard House within the abbey.

The worship of Morgath, Naveh and Agrik is prohibited and offenders will – theoretically – be sentenced to death. The worship of Halea, Ilvir and Sarajin is strongly discouraged. The omnipresence of Peonian priestesses and Laranian knights throughout the manor makes it

problematical to practice illegal religions unnoticed.

The Abbey

All NSC-Stats are provided in an separated appendix.

An asterix () indicates members of Chantaer's residential clans, members of other important (esp. noble) clans are indicated by their clan's holdings in [square brackets].*

The priory

The priory is run in a building attached to the northern wing of the temple. The priory's rooms on the ground floor are a small office, a conference room and an archive. The Pelnala (high priestess/ abbess) Alobia Seben [*Findumon*] is assisted by a secretary. The most important internal sections (hospital, archives, seminary, distillery) are lead by their own officials. The more economic decisions are made by the priory with regard to the Avasana's advice. Several competent Ebasethe manage the abbey's fields, orchards, pastures and woods. Others control the Esolani's (acolytes') work within the abbey's workshops.

- Priory: Revniina of Dimitel (secretary to the Pelnala)
- Workshops: Anama of Hunvele [*Elvan Manor*] (clothier, chandlers), Navenda of Tadeain (scriptorium, woodcarvers, artisans), Ereama of Myrndron* (mill, waterworks, bakery, kitchen)
- Agriculture: Biefua of Hevas (orchards, apiaries), Sanidia of Eskiot (fields), Eraama of Meehol* (stables, pastures and woods)

Pelnala Alobia Seben is quite an educated and progressive woman. She shares the Baron of Findumon's (being her brother) interest in sheep breeding. Each spring, she joins her brother visiting the chantry of the Guild of Arcane Lore at Pindela, dedicated to study of sheep and wool production, to share ideas and knowledge.

The Archive and Treasury

The office of the Avasana (mistress of archives and treasures) is held by Erlama of Udazart. She is not only responsible for the abbey's most valuable treasure – the relics of Ste. Chantael, valuable scripts, additional relics and treasures – but also for the financial affairs of the abbey. The abbey obtains large surpluses – more than 150 £ per annum – of which one third is reinvested, while two thirds are passed over to the Sulaplyn (bishop) of Aleath. Small parts of the nunnery's profits are stored in cash or in valuable ressources

Pelnala (Abbess) **Alobia Seben (f)**

HGT 66" WGT 145lbs FRM AVG.
CMX MEDIUM EYES BROWN HAIR BROWN

BIRTH 16/09/679 (TAI)

STR 13	INT 13	EYE 15
END 13	AUR 13	HRG 18
DEX 15	WIL 14	SML 14
AGL 15	MOR 15	TOU 16
SPD 11	COM 12	VOI 12

Religion: Peoni (65 PP)

Condition	70	Riding	64
Dodge	75	Oratory	92
Initiative	68	Rhetoric	103
Mobility	55	Weatherlore	81
Unarmed	42	Seamanship	37
Awareness	64	Fishing	42
Intrigue	92	Agriculture	82
Ritual	96	Physician	37
Hârníc	95	Singing	87
Emela	91	Khruni/ sc	82
Folklore	84	Lakise/ sc	82

Avasana **Erlama of Udazart (f)**

HGT 57" WGT 092lbs FRM SCANT
CMX MEDIUM EYES GREY HAIR BLONDE

BIRTH 06/03/647 (FENIRI)

STR 11	INT 13	EYE 12
END 13	AUR 19	HRG 13
DEX 11	WIL 15	SML 12
AGL 18	MOR 16	TOU 13
SPD 14	COM 13	VOI 13

Religion: Peoni (73 PP)
Allergy

Condition	70	Oratory	36
Dodge	90	Rhetoric	52
Initiative	71	Mathematics	92
Mobility	70	Agriculture	26
Unarmed	39	Hideworking	67
Awareness	48	Singing	39
Intrigue	81	Drawing	76
Ritual (Peoni)	97	Physician	13
Ritual (Morg.)	43	Ritual (Agrik)	23
Hârníc	104	Khruni/ sc	104
Emela	116	Lakise/ sc	115
Ormauk	76	Nuvesarl/ sc	98
Azeryani	87	Zerin	82
Negation	38	Disembodiment	18
Mental Bolt	18	Sensitivity	18

Solana

Femeanone of Likir (f)

HGT 62" WGT 104lbs FRM SCANT
CMX MEDIUM EYES BROWN HAIR BLACK

BIIRTH 23/11/674 (MASARA)

STR	14	INT	15	EYE	16
END	12	AJR	13	HRG	12
DEX	15	WIL	15	SML	17
AGL	17	MOR	14	TOU	14
SPD	13	COM	15	VOI	15

Religion: Peoni (51 PP)
Ambidextrous

Condition	70	Oratory	86
Dodge	85	Rhetoric	94
Initiative	72	Folklore	85
Mobility	85	Agriculture	68
Unarmed	51	Cookery	67
Awareness	96	Singing	63
Intrigue	84	Law	96
Ritual	92	Physician	46
Hârníc	65	Khruni/ sc	82
Emela	85	Lakise/ sc	82

Lerovana

Sanoua of Keron (f)

HGT 58" WGT 118lbs FRM XXX
CMX MEDIUM EYES GREY HAIR
BLONDE

BIIRTH 25/09/654 (TAI)

STR	14	INT	15	EYE	16
END	12	AJR	16	HRG	14
DEX	12	WIL	16	SML	12
AGL	14	MOR	13	TOU	13
SPD	10	COM	13	VOI	16

Religion: Peoni (29 PP)

Condition	75	Oratory	50
Dodge	70	Rhetoric	61
Initiative	64	Herblore	68
Mobility	50	Agriculture	78
Unarmed	39	Foraging	43
Awareness	56	Singing	85
Intrigue	91	Alchemy	62
Ritual	89	Physician	106
Knife	56	Mathematics	65
Hârníc	97	Khruni/ sc	82
Emela	82	Lakise/ sc	82
Healing	16	Clairvoyance	17

such as metals or precious stones, within the abbey's treasury and used as a current reserve, but the most part is spent on maintance to the infrastructure (buildings, ways, bridges), on support of the pilgrims and given away as alms to the poor.

- Archives and Treasury: Linriola of Theaot

Seminary

Femeanone of Likir* is the abbey's Solana (mistress of acolytes). She maintains a strict discipline among the novices and assigns them them to the single mastresses, usually for a complete month. She is also responsible for the temple school. The temple school is divides into two classes, a primary class, where the Esolani (acolytes) are taught in basic techniques as reading, writing, mathematics and peonian doctrine, and a kind of seminary, where advanced Esolani are prepared for a clerical life. Here, they learn the higher Peonian doctrine and philosophy by lectures and disputations; they might specialize in certain crafts and arts; all of them are taught in Peonian rituals, preaching and other pastoral skills.

- Templeschool: Navaem of Ledais*, Tanefua of Rebeer

Hospital

The abbey's hospital is lead by the Lerovana (mistress of healing), Sanoua of Keron. She administrates two Ebasethe who maintain the medicinal gardens and the apothecary and two Ebasethe who act as physicians. Several Esolani (acolytes) work within the medicinal gardens, others nurse the patients and assist to the physicians. The hospital also acts as a hostel for pilgrims and several Esolani tend for these guests under the Lerovana's command.

- Apothecaries: Tivrauna of Ridazol, Revlavia of Barayn [*Incella Manor*],
- Physicians: Revtuama of Hamitel*, Danaea of Teidan

Cellar and distillery

Chantaer Abbey is famed for its alcoholic products. The recipes are well guarded secrets, only known to the high celleress, Lanmaola of Ledik, and her deputy, Filriem of Teder.

- Filriem of Teder

The Laranian Guard

As usual with peonian monasteries, a unit of laranian knights guards the defenseless peonian nuns. The guard is under the command Sir Hevel of Jocun who is responsible to the Reblena

(commander) of Flaru. There are three additional Melana (laranian knights) and 7 Meken (laranian soldiers). This guard also assists the Pelnala in the enforcement of law and order. Four yeoman and the militia complete the military forces of Chantaer.

Melana: 4 heavy horse.
Meken: 1 sergeant,
2 longbows,
4 medium foot.

***Ebasethe/High Cellaress
Lanmaola of Ledik (f)***

HGT 63" WGT 133lbs FRM AVERAGE
CMX MEDIUM EYES BROWN HAIR BROWN

BIRTH 10/12/665 (LADO)

STR	12	INT	16	EYE	12
END	14	AGR	13	HRG	15
DEX	11	WIL	15	SML	13
AGL	16	MOR	16	TOU	12
SPD	12	COM	12	VOI	10

Religion: Peoni (43 PP)

Condition	70	Oratory	46
Dodge	80	Rhetoric	62
Initiative	68	Brewing	113
Mobility	60	Agriculture	48
Unarmed	45	Herblore	53
Awareness	82	Singing	36
Intrigue	65	Alchemy	51
Ritual	82	Physician	23
Hâmic	65	Khruni/ sc	83
Emela	53	Cookery	81
Goosecraft	42	Pigcraft	53

***Laranian Knight-Commander
(Melana)
Hevel of Jocun***

HGT 69" WGT 141lbs FRM LIGHT
CMX MEDIUM EYES BROWN HAIR RED

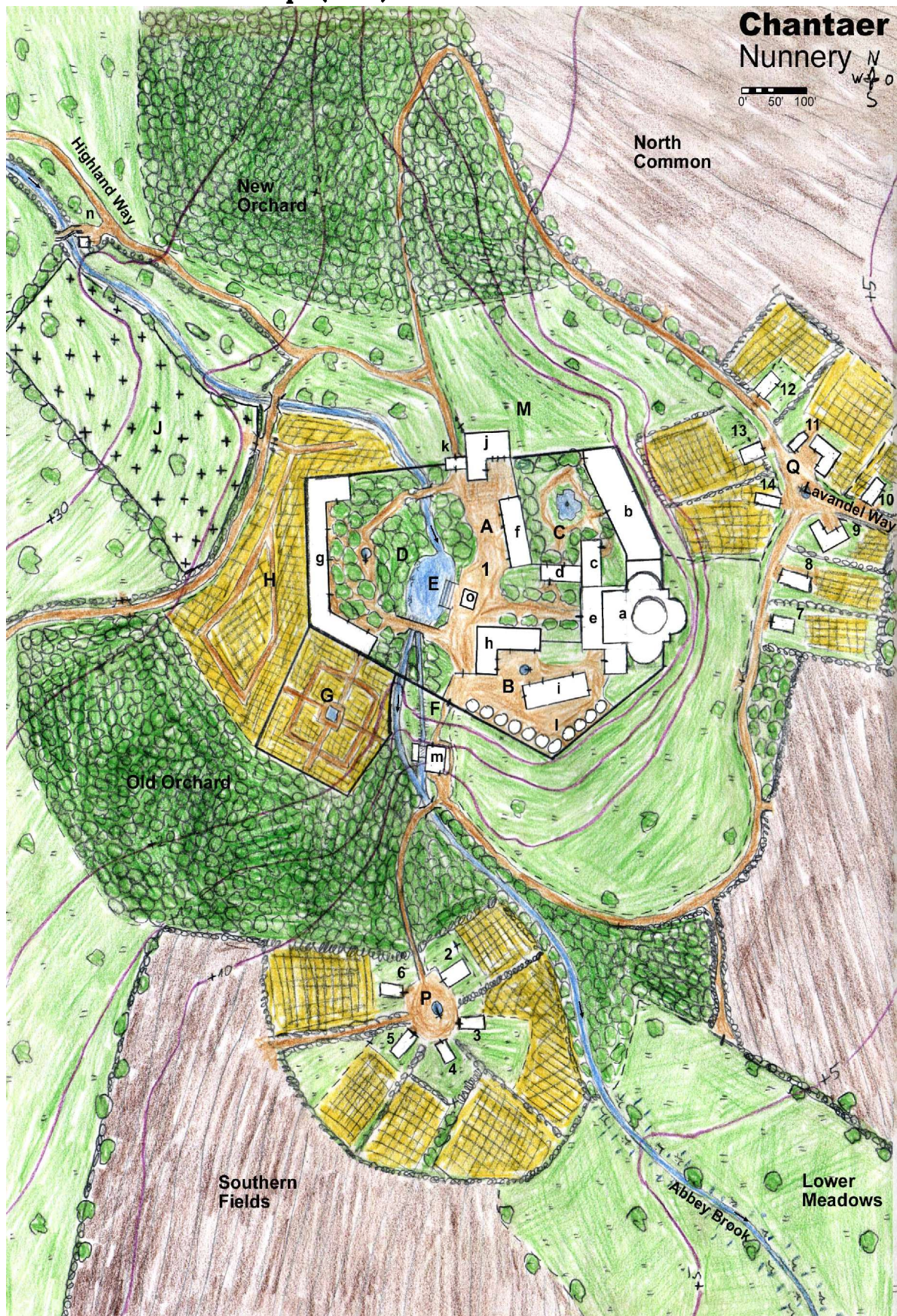
BIRTH 24/10/674 (SKORUS)

STR	12	INT	15	EYE	11
END	11	AGR	14	HRG	12
DEX	13	WIL	11	SML	13
AGL	12	MOR	13	TOU	15
SPD	10	COM	13	VOI	14

Religion: Larani (68 PP)
Neophobia

Condition	55	Riding	88
Dodge	75	Knightshield	76
Initiative	89	Spear	65
Mobility	50	Bastard Sw.	81
Unarmed	51	Short Sword	89
Awareness	56	Lance	85
Intrigue	84	Knife	56
Ritual	14	Physician	21
Hâmic	82	Lute	26
Heraldry	67	Horn	65

Chantaer – Local Map (GM)



Chantaer – Map Key

[A-O] *The Abbey*

1 **CHANTAER NUNNERY**
A detailed description of Chantaer Nunnery and its residents will be given in an own section.

[a] Temple of Peoni. The temple is not only known for its crypt with the relics of Ste. Chantael, but also for the wonderful glass paintings decorating the nine windows of the choir and transepts. [b] Dormitory, kitchen and refectory. [c] Scriptorium and library. [d] Priory. [e] Temple school. [f] Stables. [g] Hospital. [h] Workshops. [i] Barn, press and distillery. [j] Guard House. [k] Gatehouse. [l] Granaries. [m] Overshot water mill – bonded miller. [n] Waterworks. [o] Baptistery. [A] [B] [C] The abbess' garden. [D] Park. [E] Milling pond. [F] Mill race. [G] Medicinal garden. [H] Kitchen gardens. [M] Horses' pasture.

[P] *Abbey Brook Square*

2 **VILLEIN – KHEMAKIM NIMTAMA (32/25 ACRES).**

Khemakim (37) and his wife (30) have twins, a son and a daughter (both 12).

3 **FARMER – RERIM LEDAIS (0/55 ACRES)**
Perim (46) supports not only his wife (36), but also a large family of one son (10) and four daughters (18, 12, 4, 2).

4 **VILLEIN – MELIF REDAZ (24/0 ACRES)**
Melif (44) is widowed since his wife died from consumption in 718. Before, his wife gave birth to a son (18) and five daughters (21, 19, 9, 7, 6), the oldest keeping his household in a strict manner.

5 **VILLEIN – LEIUR EKIDEN (33/20 ACRES)**
Leliur (35) and his wife (24) have a son (9) and two daughters (8, 4). Additionally, he supports his clumsy and still unmarried brother(29).

6 **HALF-VILLEIN – ERAUA DURDEN (12/0 ACRES)**

Eraua (27) lost her husband last year and now has severe problems working the fields. She has also to care for her daughter Clara (10).

[Q] *Chantaer Hamlet*

7 **COTTAR/ HERDER – ERLIRI MEEHOL (4/0 ACRES)**

Erliri (22) married his wife Rahal (19) only two years ago, and now they await the birth their first child.

8 **HALF-VILLEIN – LAHEIM DURDEN (18/0 ACRES)**

husband (25), brother(21, 12), sister(5).

9 **VILLEIN/ REEVE – REIOT KAIFUS (39/0 ACRES)**

husband (44), wife (+), sons (22, 11), daughters (20, 17, 12), mother(50).

10 **VILLEIN – ILRRT DURDEN (29/0 ACRES)**
husband (45), wife (+), sons (9), daughters (23, 20, 17, 2).

11 **METALSMITH – DERLIRI AMOSIIN (0/30 ACRES)**

Derliri (31) and has just married his young wife Salira (16). He is not only busy with working for the nunnery and shoeing horses of its visitors: Additionally, he casts small artifacts (badges, brooches and amulets) showing Ste. Chantael or various religious symbols from tin, pewter or bronze, who are sold as relics/souvenirs to the pilgrims.

12 **COTTAR/ HERDER – ENUARD REDAZ (3/0 ACRES)**

husband (42), wife (35), sons (18), daughters (11, 4).

13 **COTTAR/ BEADLE – MADARD AKASAS (3/0 ACRES)**

husband (25).

14 **HALF-VILLEIN – SUNTIA LIKIR (16/0 ACRES)**

husband (+), wife (27), daughters (6), sister-in-law (14).

Maermel Hamlet & Kandar Hamlet – Local Maps (GM)



Maermel Hamlet – Map Key

A Maermel Square, B Chapel Green, C Cemetery, D Mill Common, E Upper Common, F Upper Meadows, G Field Plots, H Lower Meadows, I Field Plots, J Field Plots, K Abbey Brook Meadows, L Mill Pond.

1 CHAPEL OF ST. MAERMAL – EBASETHE TANLAMA LIDETAN

According to legend, the chapel marks the place, where St. Maermal and Ste. Chantael appeared and disappeared. As only few healings have been reported from Maermel, the chapel is only visited by a small part of the pilgrims. The chapel is run by two female ebase the, Jaselle Oltheim (49) and Pradia Ushed (32). They have also taken care of Sallek, an orphan whose parents died during their pilgrimage to Chantaer, for several years. Now, the boy has reached the age of 14 and the priests try to find a master willing to take him on as an apprentice.

2 COTTAR/BEADLE – OSDER EKIDEN
husband (25), wife (22), son (4), daughter (0).

3 COTTAR – ALIFAJA MEEHOL
husband (1), wife (+), sons (-), daughters (-).

4 VILLEIN – IMATAN REDAZ
husband (38), wife (37), sons (17, 12), daughter (2).

5 COTTAR/HUNTER – UVDZIM DURDEN
husband (42), wife (39), son (19), daughters (15, 8).

6 COTTAR – HEMAKER ANMAR
husband (36), wife (+), son (7), daughters (15, 9).

7 HALF-VILLEIN – KHEASOT ANMAR
husband (39), wife (42), sons (18, 10), daughters (19, 6), sister (32).

8 HALF-VILLEIN – EHEAS LIKIR
husband (39), wife (2nd: 25), sons (14, 12, 10), daughters (17, 15).

9 VILLEIN – UINRT NARIAIL
husband (36), wife (35), sons (15, 0), daughters (14, 11).

10 YEOMAN (LH) – LIDAZAS RABEEL
husband (30), wife (30), son (11).

11 VILLEIN – KAINARD MEEHOL
husband (34), wife (36), son (15), daughter (2).

12 HALF-VILLEIN – GEATTE DURDEN
husband (41), wife (+), sons (18, 15).

13 HALF-VILLEIN – EVERRI HAMITEL
husband (37), wife (36), daughters (14, 9).

14 COTTAR – OSEAULM HAMITEL
husband (43), wife (2nd: 25), sons (18, 9), daughters (7, 5).

15 HALF-VILLEIN – GELIAIN MEEHOL
husband (46), wife (40), sons (18, 16, 12, 2), mother (64).

16 VILLEIN – KEASDEN DURDEN
husband (+), wife (25), son (2), daughter (4), brother-in-law (26).

17 COTTAR/HUNTER/WOODWARD – OMAAIS GEDOILM
husband (35), wife (+), sons (10), daughters (4).

18 CHARCOALER – RIVARD GEMASON
husband (31), wife (25), daughters (4, 1), apprentice (f16).

19 VILLEIN – LAKIER AKASAS
husband (43), wife (39), son (5), daughters (18, 12, 0).

20 VILLEIN/HERDER – DADAZEF REDAZ
husband (+), wife (23), son (4), brother-in-law (44), nephew (17).

21 YEOMAN (MF) – GIEHULM FELTHEIN
husband (35), wife (32), son (6), daughters (14, 9).

22 HALF-VILLEIN – ANINER DURDEN
husband (36), mother (56).

23 HALF-VILLEIN – AKEHDEN EKIDEN
husband (46), wife (2nd: 37), sons (19, 15), daughters (16, 12).

24 HALF-VILLEIN – GEMEHEF AKASAS
husband (37), wife (36), sons (16, 14, 11).

25 VILLEIN – ALDEL MEEHOL
husband (39), wife (37), sons (15, 12).

26 VILLEIN – EINAS DURDEN
husband (41), wife (2nd: 30), sons (13), daughters (15, 10, 8), brother (22).

27 HALF-VILLEIN – ILVDAN HAMITEL
husband (42), wife (34), daughters (17, 13, 12, 7, 1).

28 HIDEWORKER – DERUTAN RIATOL
husband (24), wife (45),
niece/apprentice (16).

Kandar

General Description

Kandar is the fief's primal settlement. The Chantaer-Windfeld road is nearby (675 meters to the west), and many pilgrims cross the village on their way to Maermel (which lies 2.5 km to the east) and back. In addition to that kind of travellers, teamsters and merchants having business with the nunnery, come by and may stay overnight. That makes Kandar is a more busy place than one would expect for a village of its size. Its position allows for an own inn, in addition to the more common woodcrafters', salter's, and timberwright's workshops.

Map Key

A Village Square, B Abbey Brook Meadows, C North Common, D South Common, E Sunset Fields, F Southern Plots, G New Fields.

1 EBASETHE – ENRA HAMITEL (0/27 ACRES)
wife (25), male acolytes (19, 18), sister (12).

2 THE PILGRIM'S BOOT
INNKEEPER KEMAAS RYVER (0/5 ACRES)
An old boot hanging from its straps is the sign of Kandar's Inn. Kemaas (37) is busy catering to the better-off pilgrims and merchants on their way to and from the cloister. He has an apprentice (23) whom Kemaas will have to promote this year, so he is looking for a new apprentice. His daughter serves as a barmaid. Kemaas is widowed since his wife died in birth of the youngest son. She left him two sons (12, 2) and two daughters (16 and 5).

3 VILLEIN – IATF OREF (37/0 ACRES)
husband (24), mother(39),
brother(16), sisters (18, 17, 9).

4 HALF-VILLEIN – ANATRI EKIDEN (11/0 ACRES)
husband (29), wife (26), sons (7).

5 VILLEIN – OSINR KAIFUS (35/0 ACRES)
husband (31), wife (32), daughters (12), brother(21).

6 COTTAR – OVMKARD TIVLAAN (3/0 ACRES)
husband (22).

7 COTTAR – ZEHETE OREF (0/0 ACRES)
husband (29), wife (26).

8 WOODCRAFTER – OUIER KALERTH (0/10 ACRES)
husband (27), wife (18), sons (2 months),
female apprentice (15).

9 HALF-VILLEIN – BISIMIA NARIAIL (14/0 ACRES)
husband (+), wife (33), sons (9), daughters (17).

10 VILLEIN – ESKIAIN HAMITEL (37/0 ACRES)
husband (47), wife (32), sons (20, 12, 1).

11 COTTAR – FERUR DURDEN (2/0 ACRES)
husband (41), wife (38), sons (17),
daughters (9).

12 VILLEIN – LADEZR KAIFUS (27/0 ACRES)
husband (38), wife (28), sons (10),
daughters (2).

13 SALTER – KAEON MABETE (0/15 ACRES)
husband (29), mother (55).

14 YEOMAN (LF) – ILEHFAM EVELIAS (0/50
ACRES)
husband (41), wife (+), sons (16),
daughters (14, 11, 10).

15 VILLEIN – OSRDEN EKIDEN (25/25
ACRES)
husband (41), wife (+), sons (21, 14, 11).

16 COTTAR – GIINFAM AKASAS (2/0 ACRES)
husband (44), wife (39), sons (10),
daughters (18, 11).

17 MILLER – LOMAKFAM ENIMA (0/15
ACRES)
husband (43), wife (29), daughters (11),
mother (63), brother (29). Lomakfam grinds
the grain for all of the manors' population
except of the nunnery itself.

18 HALF-VILLEIN – AKUARD OREF (17/0
ACRES)

husband (46), wife (+), sons (21).

19 VILLEIN – TIDAZDEN DURDEN (33/0
ACRES)
husband (37), wife (31), sons (14, 2),
daughters (3).

20 COTTAR/BEADLE – IIRK NARIAIL (0/0
ACRES)
husband (23), wife (21).

21 TIMBERWRIGHT – FILHIEM GEDOILM (0/20
ACRES)
husband (+), wife (31), daughters (3),
mother(47), sister (5).

22 VILLEIN – ISIFUS OREF (34/0 ACRES)
husband (37), wife (26), daughters
(17, 12; 2 months).

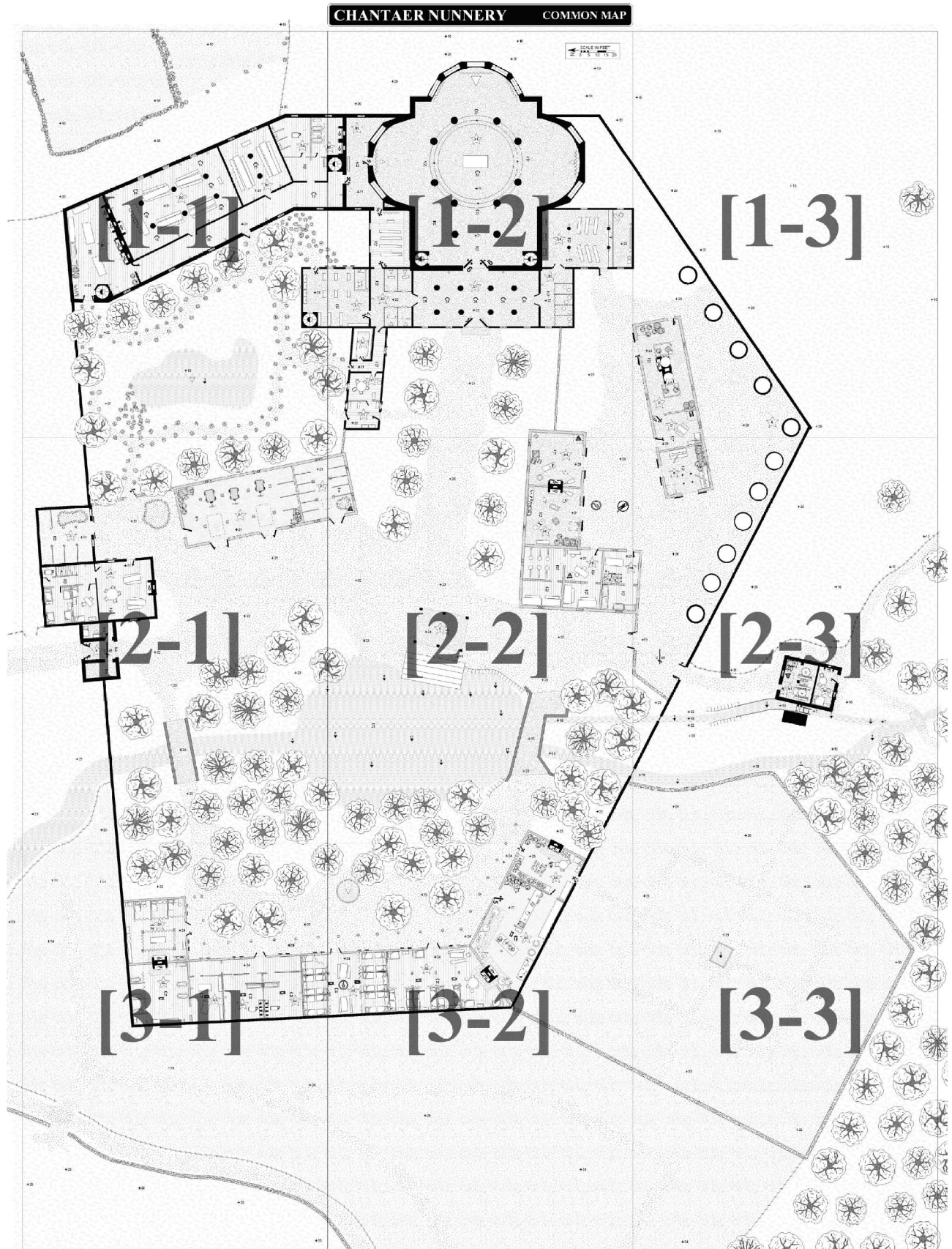
23 YEOMAN (LF) – OPIER KAIFUS (0/45
ACRES)
husband (43), wife (+), sons (21, 19, 10, 8),
daughters (22, 9).

24 VILLEIN – ZEUEL KAIFUS (33/0 ACRES)
husband (34), wife (29), sons (3),
daughters (8).

The Nunnery

The nunnery is enclosed by a 9-12 feet high stone wall. The enclosure can be di-

in the east, together with the seminary; the nuns' contemplative area in the north-



vided into four main complexes: the temple

eastern quarter with its dormitories, the kit-

chen, refectories, a small garden and the scriptorium; the economic courtyard in the north-south-axis with the guardhouse, priory/guesthouse, stables, shed, workshops, graineries, mill and distillery; and the western quarter with the hospital and an extensive park.

The nunnery is flanked by the medicinal gardens in the west, and a meadow for the horses in the north. The eastern approach is hindered by a steep drop of more than 10 feet.

[A] TEMPLE OF PEONI. The **TEMPLE [A1]** is an impressive stone building, with an 60' dome supported by eight pillars encircling the central altar. The room is illuminated by by nine large windows with rich and colorful glass paintings, set in the three abses, to the north, east and south. Spiral staircases lead up to the **CHOIR LOFT** above the western part of the nave and down to the **CRYPT** with the relics of Ste. Chantael. An door in the northern apse leads to the sacristy. The office of the Avasana (mistress of archives and treasures) is more important than in most other peonian temples and is held by Erlama of Udazart. She is not only responsible for the abbey's most valuable treasure – the relics of Ste. Chantael, valuable scripts, additional relics and treasures, but also for the financial affairs of the abbey. Small parts of the nunnery's profits are stored in cash or in valuable resources such as metals or precious stones, within the abbey's treasury and used as a current reserve. The Avasana's work within the archives and treasury is assisted by Ebasethe Linriola of Theaot.

[B] DORMITORY, KITCHEN AND REFECTORY. The building has four stories: the cellar is used to hold stocks for the kitchen, the second floor is entirely dedicated to **CELLS** for the nuns and the third floor provides three large **DORMITORIES** for acolytes and pilgrims. The ground floor is described in detail: The **KITCHEN [B1]** caters the hole

nunnery, including nuns, guards, guests, and patients of the hospital. Two large fireplaces with giant cauldrons are used for brewing, roasting and cooking, two ovens for baking and frying. The kitchen is connected to the nunnery's freshwater-supply- and sewer-system. A trapdoor and a spiral staircase provide direct access to the storage and cooling cellars below. The kitchen's chef is Ebasethe Erema of Myrndron, who also oversees the maintenance of the waterworks and the mill. The **NUNS' REFECTORY [B2]** is reserved for the meals of the priestesses and acolytes. Meals are taken in silence, while a nun reads from the order's statutes or holy scripts. The smaller **GUESTS' REFECTORY [B3]** is dedicated to pilgrims/guests who stay for a longer time, but do not take on as acolytes. Meals should be taken in silence while listening to the readings from the holy scripts, but is not as harsh enforced as in the nuns' refectory. The **LAVATORY [B4]** and **BATH [B5]** are connected to the nunnery's freshwater- and sewer-system. The „Reslava-kai-Peledaur“, the Mendicants' Portal, passes the Nunnery's wall. Peonians who become Reslavas leave the nunnery by this gate to begin their new life as a wandering priests.

[c] SCRIPTORIUM AND LIBRARY. This four-storied building houses the main part of the nunnery's **ARCHIVES** and **LIBRARY** in the vaulted cellar which connects to the **SCRIPTORIUM [C1]** on the groundfloor. On the second floor, a smaller part of the library is kept. The third floor (**ATTIC**) is used to hold stocks of parchment, vellum and ink. The scriptorium is lead by Ebasethe Navenda of Tadeain, who is also responsible for those acolytes who work as woodcarvers or artisans.

[D] PRIORY. This later addition provides no cellar. On the groundfloor, the **OFFICE [D1]** is used for rather secular book-keeping and the Pelanla's correspondence. It is overseen by Revniina of Dimitel, the secretary to the Pelanla. Adjoining, a small

CONFERENCE CHAMBER [D2] is used by the Pelnala to receive guests of higher rank. The taxrolls are kept in the priory's ARCHIEVE [D3]. The second floor provides ACCOMODATION for noble guests, the attic on the third floor is used to store valuable STOCKS.

[E] LOBBY, CHAPEL, TEMPLE SCHOOL, CONFESSION CELLS, SACRISTY. The cellar below the lobby is accessible from the crypt and holds the TREASURY. The TEMPLE LOBBY [E1] is compleately vaulted and illuminated by four windows in the western wall. The eight pillars and vault's ribs are heavily carved with floral motives. The CONFESSION CELLS [E2] are frequently used for private confessions and prayers of pilgrims. The four northern cells provide statues of Peoni and kneeling banks, while the four southern cells are outfitted with two seats (one for the confessor and one for a priest). The SACRISTY [E3] is used by priests to prepare services held either in the chapel or main temple. The CHAPEL [E5] is mainly used for silent prayers and private services of the nuns. The TEMPLE SCHOOL [E4] is used for lessons in elementary skills as litteracy as awell as for advanced lectures on Peonian divinity. The abbey's Solana (mistress of acolytes) is Femeanone of Likir. She maintains a strict discipline among the novices and assigns them them to the single mastresses, usually for a complete month. She is also responsible for the temple school. The temple school is divides into two classes, a primary class, where the Esolani (acolytes) are taught in basic techniques as reading, writing, mathematics and peonian doctrine, and a kind of seminary, where advanced Esolani are prepared for a clerical life. Here, they learn the higher Peonian doctrine and philosophy by lectures and disputations; they might specialize in certain crafts and arts; all of them are taught in Peonian rituals, preaching and other pastoral skills. The Solana is assisted by Ebasethes Navaem of Ledais and Tanefua of Rebeer in the operation of the templeschool.

[F] STABLES. On the northern part of the ground floor, the building houses the nunnery's SHED [F1] for waggons, carts and larger agricultural tools. The southern part is a STABLE [F2] for the draught- and ridinghorses. The second floor is a HAYLOFT and houses a bonded ostler, his family and apprentice. The building is regularly inspected by Ebasethe Sanidia of Eskiot and Ebasethe Eraama of Meehol, who are responsible for the nunnery's argricultural operations.

[G] HOSPITAL. The abbey's hospital is lead by the Lerovana (mistress of healing), Sanoua of Keron. She administates two Ebasethe who maintain the medicinal gardens and the apothecary and two Ebasethe who act as physicians. Several Esolani (acolytes) work within the medicinal gardens, others nurse the patients and assist to the physicians. The hospital also acts as a hostel for pilgrims and several Esolani tend for these guests under the Lerovana's command.

The hospital is a simple single-story daub-and-whattle building erected adjoining to the nunnery's enclosure wall. The TREATMENT ROOM [G1] is used for surgery by the Lerovana herself or the two physicians, Revtuama of Hamitel and Danaea of Teidan. The room is also used to care for problematic patients. The BATHROOM [G2] and the massage ROOM [G3] are used for balneotherapeutic treatments, while the LAVATORY [G4] assures basic hygienic conditions (two compartments, one for each gender). The patients are accomodated separated by gender (WOMEN'S QUARTER [G5], MEN'S QUARTER [G6]). Each quarter is heated by a fireplace or brazier. The APOTHECARY [G6], lead by the nunnery's apothecaries Ebasethe Tivrauna of Ridazol and Ebasethe Revlavia of Barayn, is used to prepare all medicines used in the treatment of the hospital's patients, as well as simplica for the export, primarily medicinal herbs shipped to nearby peonian temples and hospitals or sold for silver to apothecaries. The equipment is excellent by hârníc

standards: there are presses to extract juices and oils from plants and fruit, various distillery apparats are used to extract essences and waters, mortars and handmills to grind substances. The shelf holds hundreds of labeled and sealed pots and glasses containing most of all known simplica used in Lythian medicine. The neighboured **STORAGE ROOM [G7]** holds racks to dry medicinal herbs harvested in the medicinal gardens, which can be directly accessed by the door in the outer wall. The bed may be used by the apothecary or physician-on-duty.

[H] WORKSHOPS. A two-story daub-and-whattle-building is erected above the stone-vaulted **WINE CELLARS** (connected to the cellars below [i]). The **SMITHY [H1]** can be used by various craftsmen or artisans who stay during their pilgrimage at the nunnery, but is also used as a chandlers' workshop. The **COOPER'S WORKSHOP [H2]** is operated by a bonded woodcrafter and his apprentices, who look for the wine barrels in use and also make new ones. [All the craftsmen live on the attic above their workshops.] The **CLOTHIER'S WORKSHOP [H3]** consists of rooms for spinning, weaving (with four looms), sewing and the preparation of the wool. Raw wool and textiles are stored in the attic above this rooms. Together with the **DYER'S WORKSHOP [H4]**, they are operated by two bonded clothiers, their four journeymen and six apprentices. The nunnery's clothiers' and chandlers' workshops are overseen by Ebasethe Anama of Hunvele.

[I] BARN, PRESS AND DISTILLERY. Chantaer Abbey is famed for its alcoholic products. The recipes are well guarded secrets, only known to the high celleress, Lanmaola of Ledik, and her deputy, Ebasethe Filriem of Teder. Within the large **PRESSES [I1]**, juice is pressed from the fruits harvested in the nunnery's orchards – mainly apples. The juice is filled in large barrels and stored within the cellard below. Natural yeasts initiate the fermentation and

when this process stops, the apple wine is further processed within the **DISTILLERY [I3]**. Here, the cider is distilled twice by heating the cider in large copper vessels and collecting the condensed vapours in cooled copper pots. The distillate is filled into oak-barrels and stored in the **CELLAR** to mature for at least 7 years, before it is sold as the famed "Chantaer" apple-brandy. The cellar extends below the court between buildings [H] and [I]. Access to the distillery and maturing cellar is restricted to the high celleress, her deputy and the bonded innkeeper, who resides in [I2]. The innkeepers' main task is to brew beer and ale for the nunnery's consumption – this is done within the kitchen – and legitimating the sale of the produced beverages (cider, apple wine and brandy). The attic is used as a **HAYLOFT**. The barn is overseen by Ebasthes Biefua of Hevas (who oversees the orchards) and Sanidia of Eskiot (responsible for the fields).

[J] GUARD HOUSE. This stone building houses the Iaranian guard, consisting of three Melana (knights) and seven Meken (common soldiers) of the Order of the Lady of the Chequered Shield. The **MESS [J1]** is used by both, commoners and nobles. On the groundfloor are the quarters for the common soldiers, on the second floor those for the knights. The adjoining **STABLE [J2]** is exclusively used for the steeds of the guard.

[K] GATEHOUSE. The gate is open during daylight and closed by night. It is permanently guarded by two of the Iaranian soldiers. There is a **GUARD-ROOM** in the eastern room, while the western serves as a **STOREROOM**.

[L] GRANARIES. Eleven graneries hold enough grain to supply the manor for two years – for both food and seedings. The granaries are to the responsibility of Ebasethe Sanidia of Eskiot.

[M] OVERSHOT WATER MILL. The nunnery has its own double-mill. The gears

are found in the **BASEMENT [M1]**, they power the two small grindstones on the second floor. One is used to grind grain, the other to press oil from nuts and linseed. The mill is operated by a bonded miller, a rather unusual case, as mills are usually owned by the Millers' Guild and operated by freemasters. The miller lives in a **CHAMBER [M2]** in the basement of the mill.

[N] **WATERWORKS** [not on interior map]. A small weir diverts fresh water from the stream into leaden pipe-line, running below the way into the nunnery, where

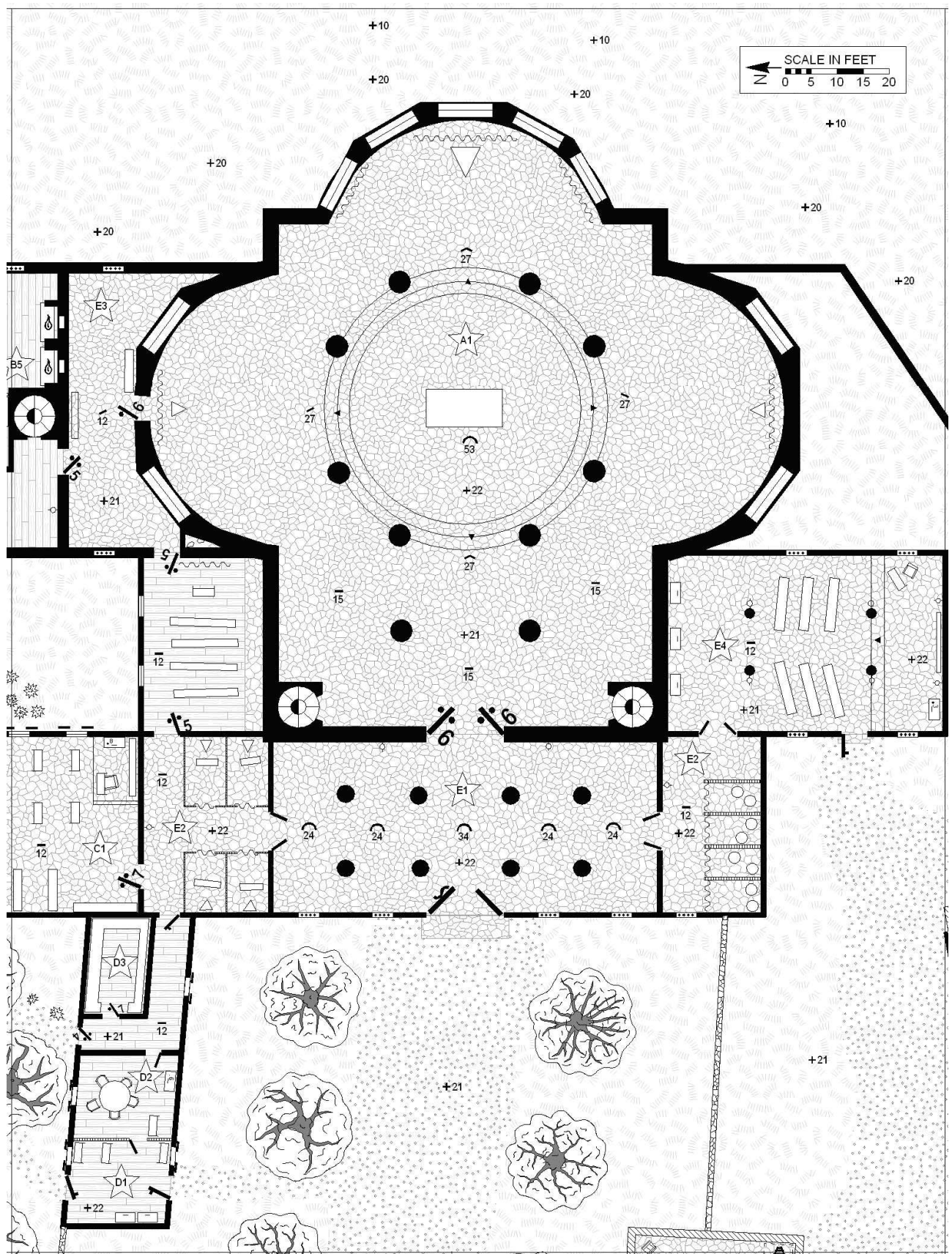
it is distributed to several wells (supplied buildings: B, G, H, I). The severs dewater all these buildings from waste and are permanently washed by the overflowing fresh water.

[O] **BAPTISTERY.** The baptistery is an open baldachin with carved pillars supporting an wooden roof. It is used during the ceremonies whenever someone is baptized. After the confession within the baptistery, the priest and the person to be baptized descend the stairs into the water of the **NUNNERY'S POND**.

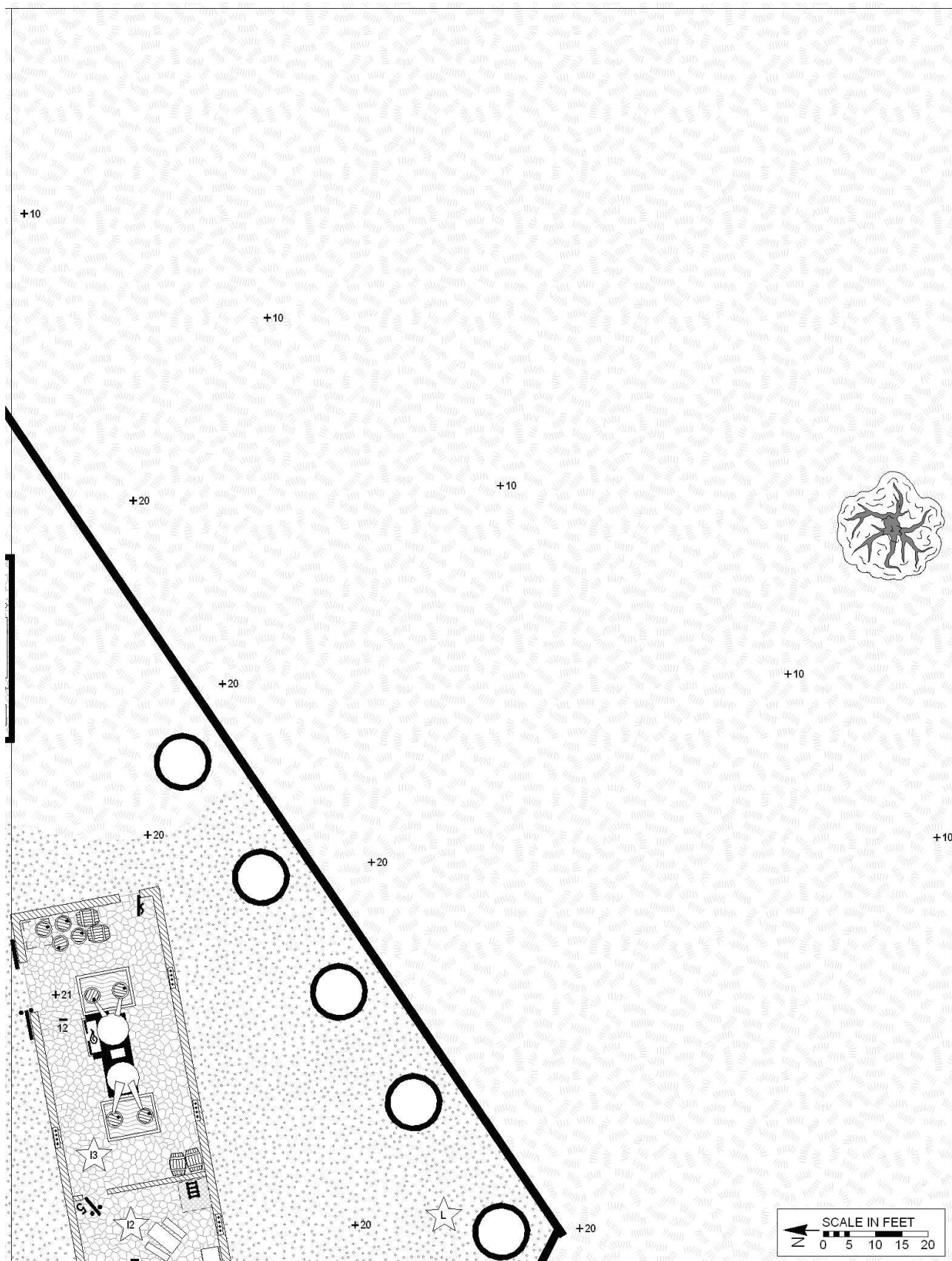
CHANTAER NUNNERY [1-1] COMMON MAP



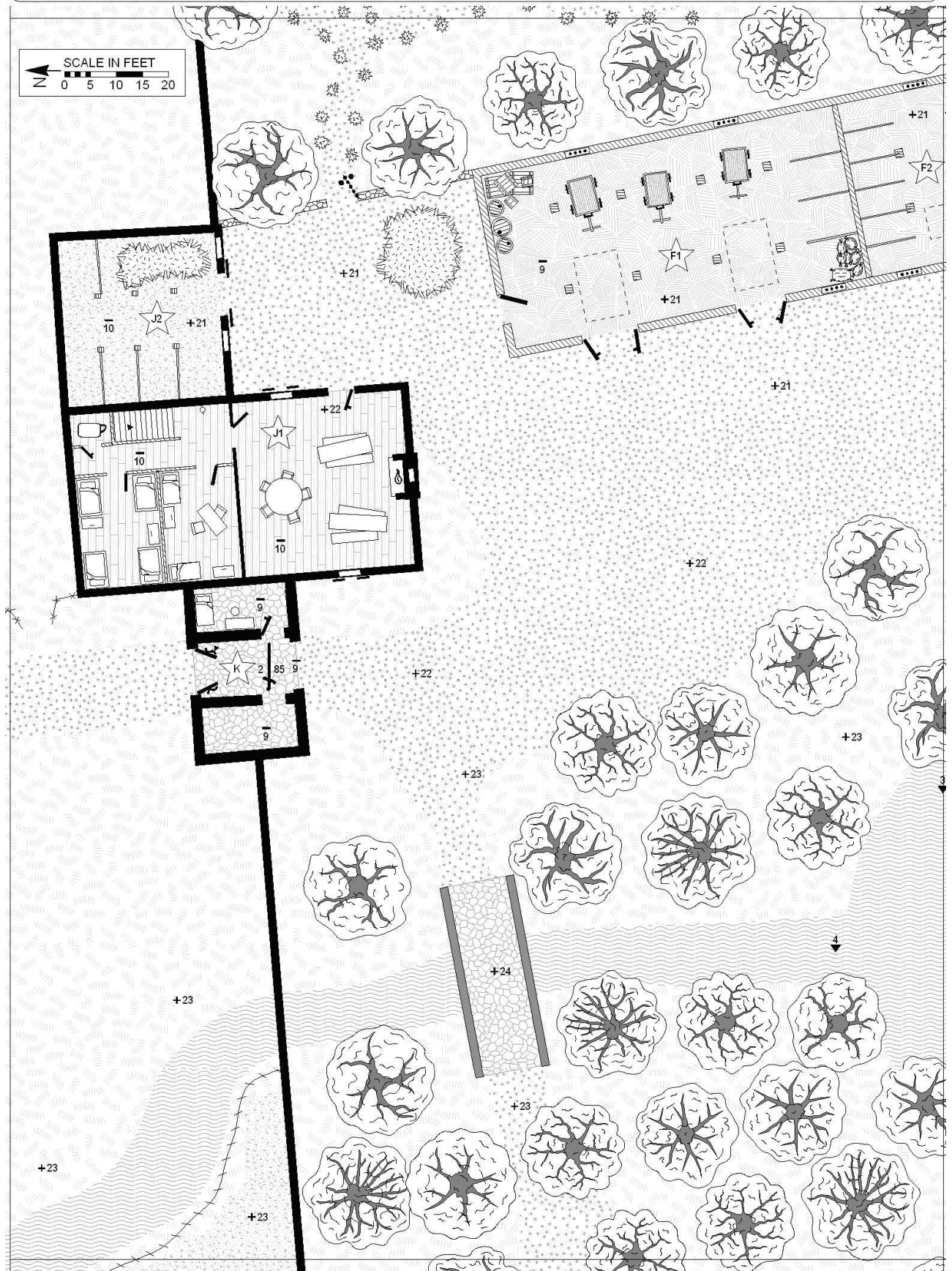
CHANTAER NUNNERY [1-2] COMMON MAP



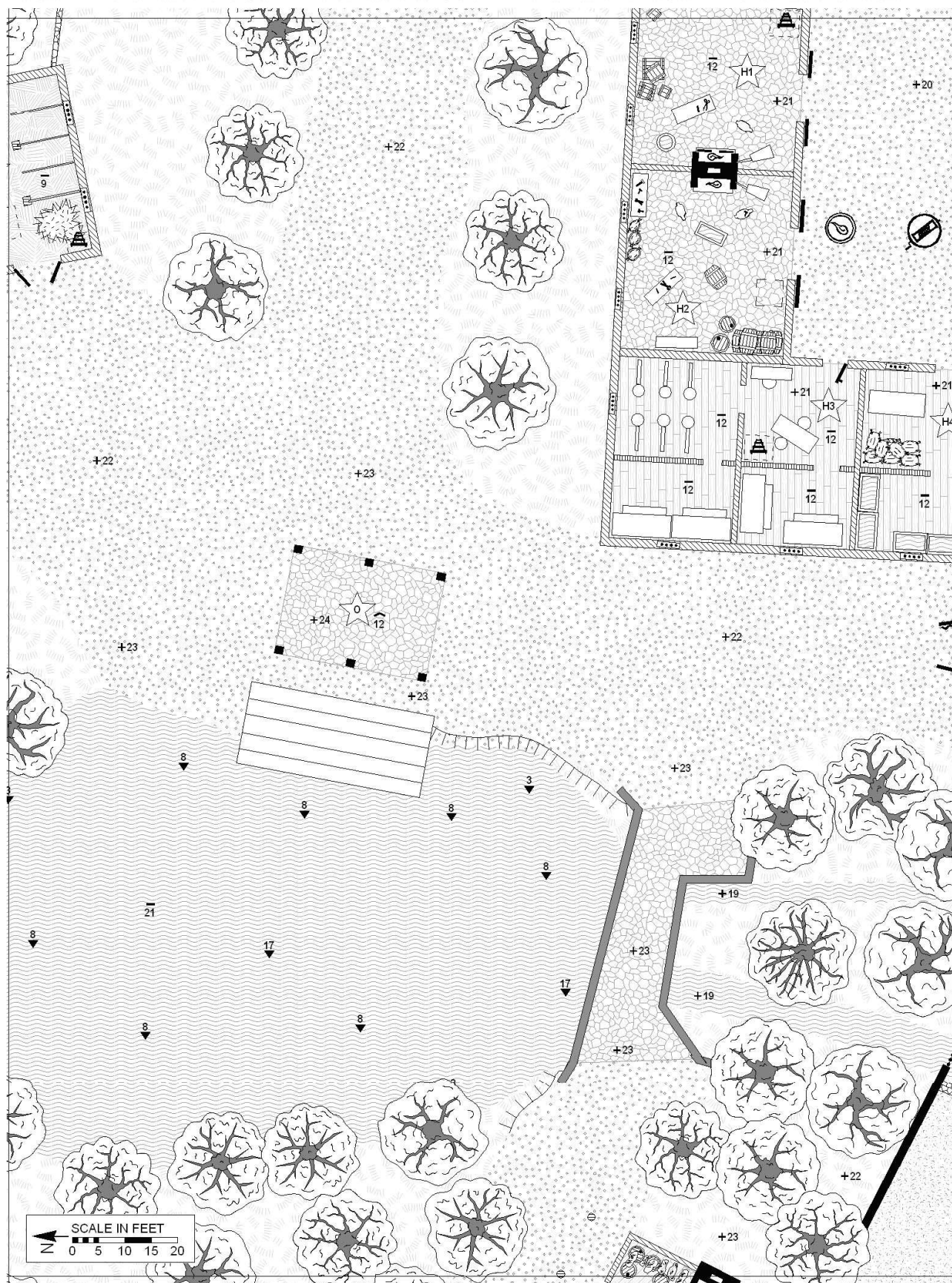
CHANTAER NUNNERY [1-3] COMMON MAP



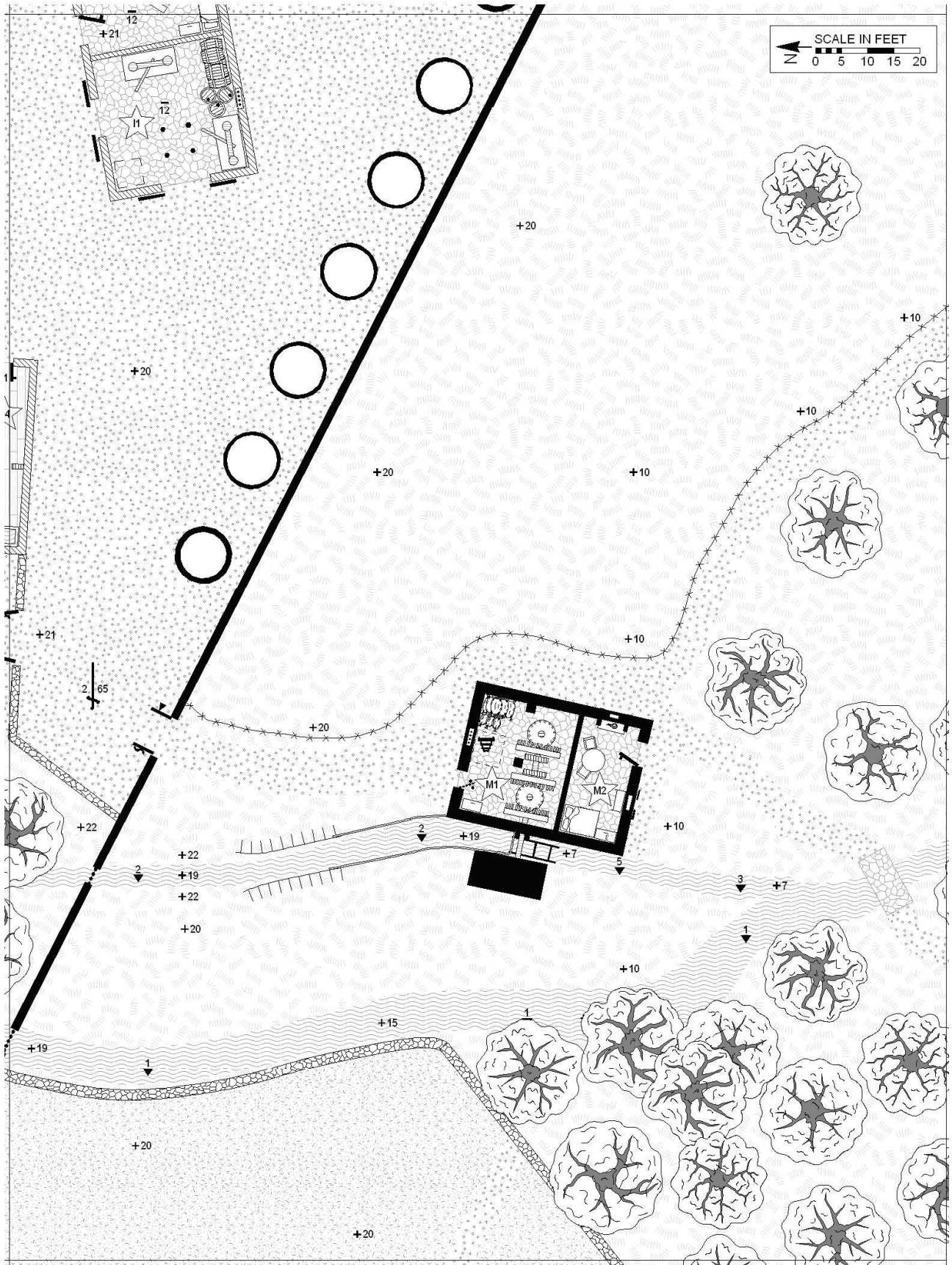
CHANTAER NUNNERY [2-1] COMMON MAP



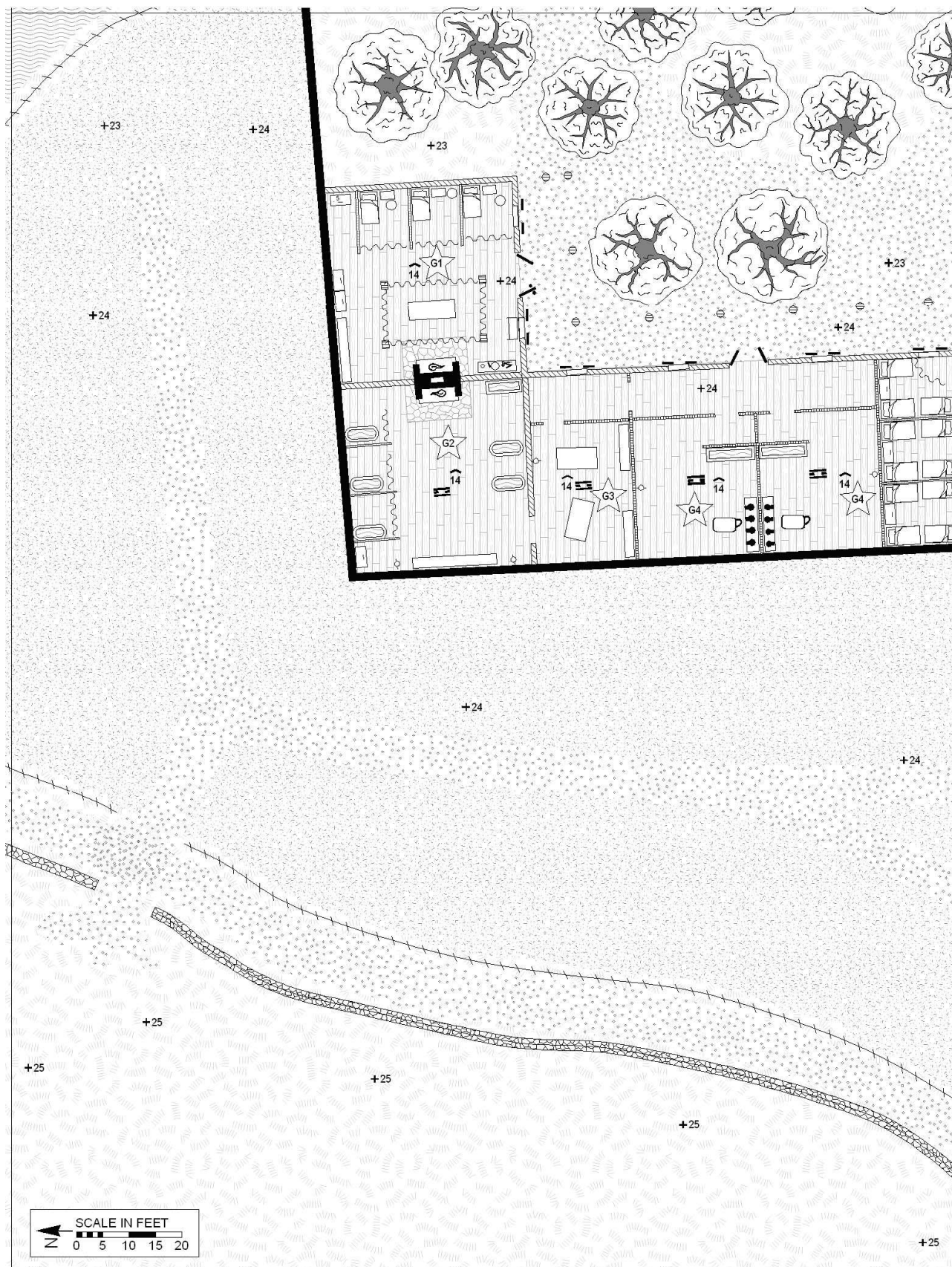
CHANTAER NUNNERY [2-2] COMMON MAP



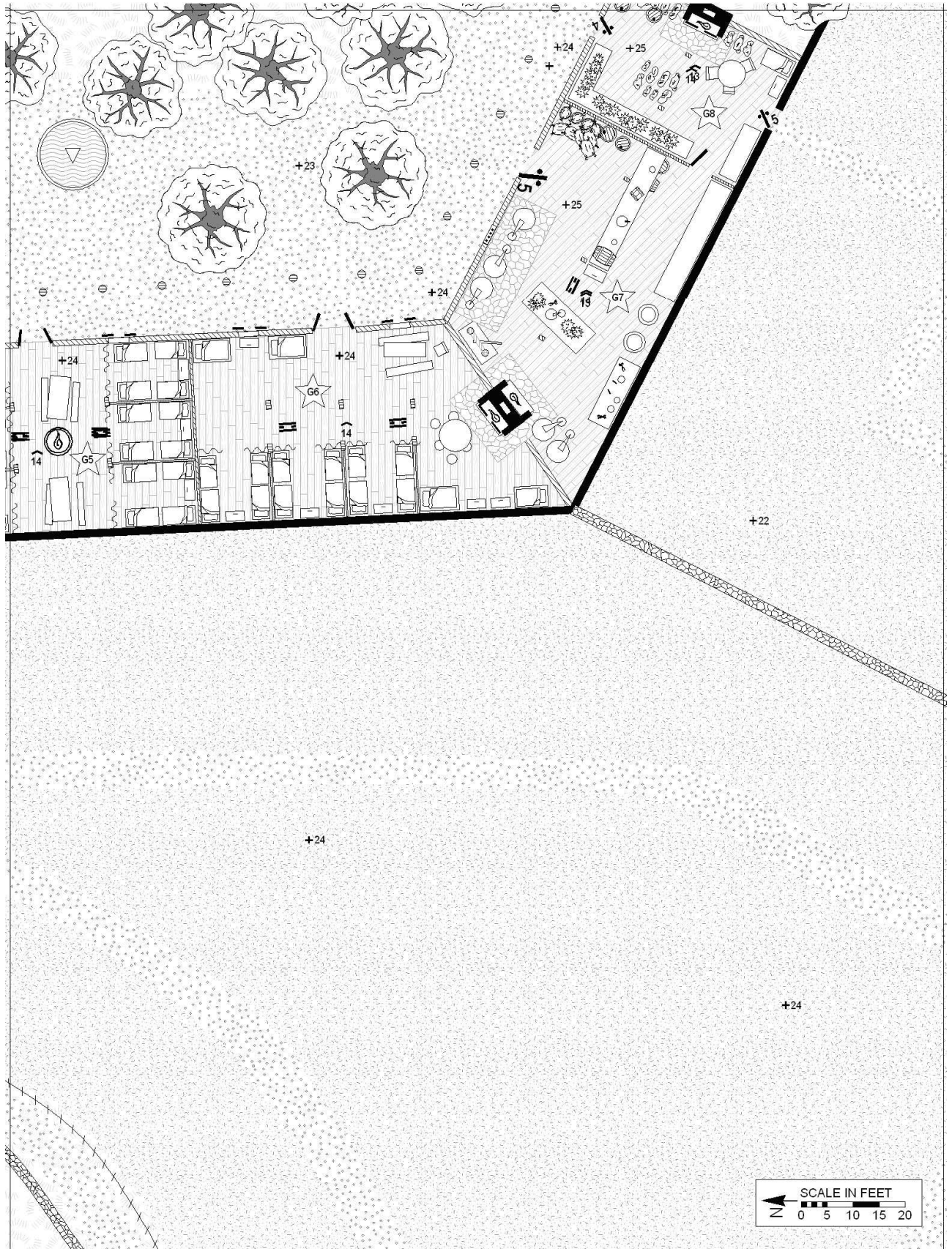
CHANTAER NUNNERY [2-3] COMMON MAP



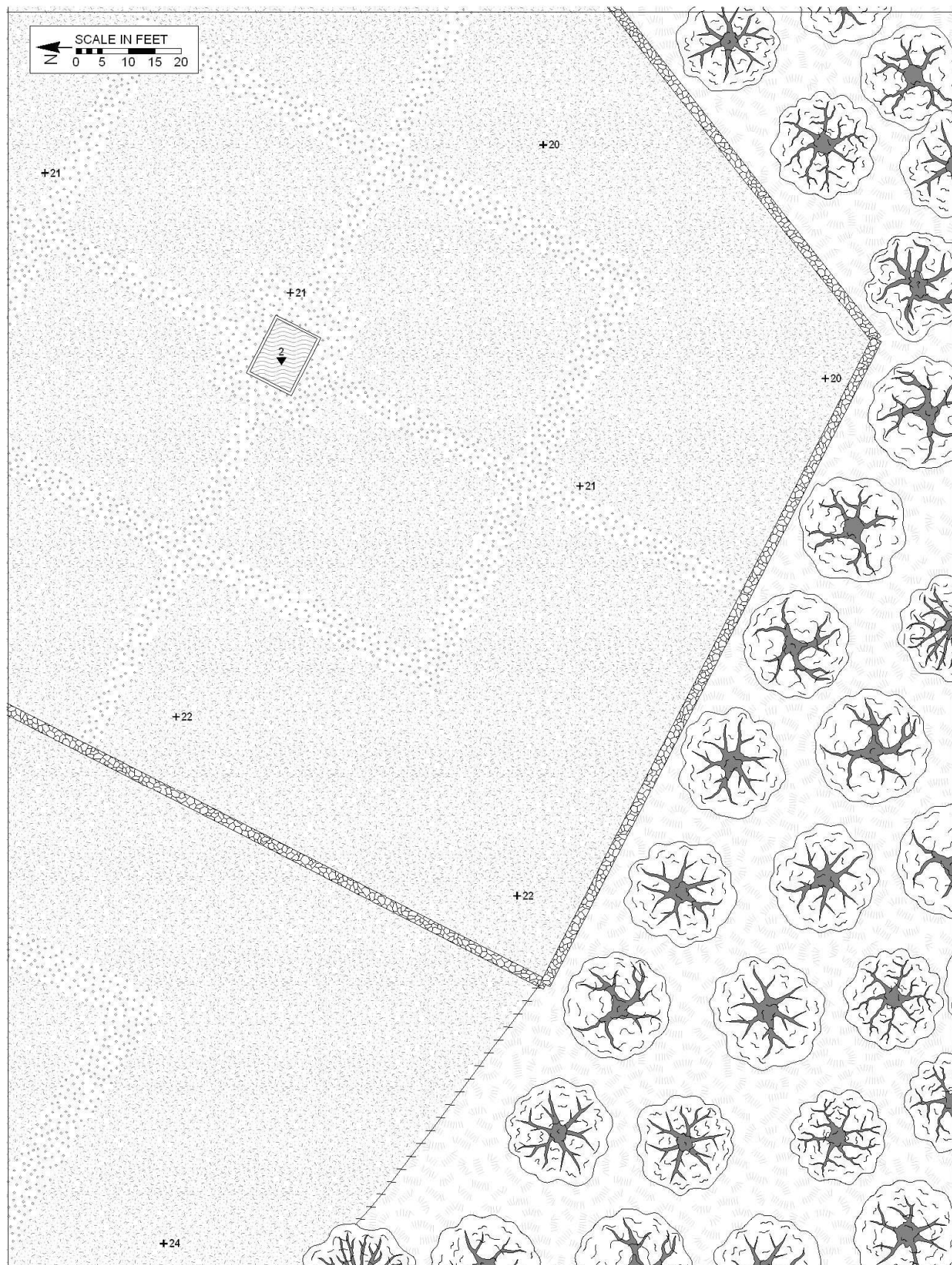
CHANTAER NUNNERY [3-1] COMMON MAP



CHANTAER NUNNERY [3-2] COMMON MAP



CHANTAER NUNNERY [3-3] COMMON MAP



Manor Data Tables

VILLAGE CENSUS (Chantaer)

ID	TENANT	C	O	NAME	CLAN	HD ADULT		CHILDREN			ACRES		KIND				
						SIZE	M	F	8-12	0-7	ML	SERF	FREE	LABOR	RENT	FEES	LIC.
1	[Abbey]				m—f	0								0	0 d	0 d	
2	Villein	S		Khemakim Nintama	2—2	4	1	1	2			32	25	128	210 d	63 d	
3	Farmer	F		Rerim Ledais	2—5	7	1	2	2	2			55	0	390 d	61 d	
4	Villein	S		Melif Redaz	2—5	7	2	2	1	2		24		96	60 d	30 d	
5	Villein	S		Leliur Ekiden	3—3	6	2	1	2	1		33	20	132	180 d	59 d	
6	Half-Villein	S		Eraua Durden	0—2	2		1	1			12		48	60 d	18 d	
7	Cottar/ Herder	S		Erliri Meehol	1—1	2	1	1				4		16	60 d	10 d	
8	Half-Villein	S		Laheim Durden	4—1	5	2	1	1	1		18		72	60 d	24 d	
9	Villein	S	R	Reiot Kaifus	3—4	7	2	3	2			39		0	60 d	45 d	
10	Villein	S		Ilrrt Durden	2—6	6	1	3	1	1		29		116	60 d	35 d	
11	Metalsmith	C		Derliri Amosiin	1—1	2	1			1			30	0	240 d	36 d	144 d
12	Cottar/ Herder	S		Enuard Redaz	2—3	5	2	1	1	1		3		12	60 d	9 d	
13	Cottar	S	B	Madard Akasas	1—0	1	1					3		0	60 d	9 d	
14	Half-Villein	S		Suntia Likir	0—3	3		1	1	1		16		64	60 d	22 d	

VILLAGE CENSUS (Maermel)

HD ADULT CHILDREN ACRES KIND																	
ID	TENANT	C	O	NAME	CLAN	SIZE	M	F	8-12	0-7	ML	SERF	FREE	LABOR	RENT	FEES	LIC.
1	Ebasethe	P		Tanlama Lidetan	1—2	3	1	2					18	0	0 d	0 d	
2	Cottar	S	B	Osder Ekiden	2—2	4	1	1		2		2		0	60 d	8 d	
3	Cottar	S		Alifaua Meehol	0—1	1		1				3		12	60 d	9 d	
4	Villein	S		Imatan Redaz	3—2	5	2	1	1	1		36		144	60 d	42 d	
5	Cottar/ Hunter	S		Uvdazim Durden	2—3	5	2	2	1			0		0	60 d	6 d	
6	Cottar	S		Hemaker Anmar	2—1	3	1	1		1		2		8	60 d	8 d	
7	Half-Villein	S		Kheasot Anmar	3—4	7	3	2	1	1		20		80	60 d	26 d	
8	Half-Villein	S		Eheas Likir	4—3	7	2	3	2			20		80	60 d	26 d	
9	Villein	S		Uinrt Nariail	3—3	6	2	2	1	1		31		124	60 d	37 d	
10	Yeoman (LH)	Y		Lidazas Rabeel	1—3	3	1	1	1				70	0	130 d	76 d	
11	Villein	S		Kainard Meehol	2—2	4	2	1		1		29		116	60 d	35 d	
12	Half-Villein	S		Geatte Durden	2—0	2	2					11		44	60 d	17 d	
13	Half-Villein	S		Everri Hamitel	1—2	3	1	1	1			13		52	60 d	19 d	
14	Cottar	S		Oseaulm Hamitel	3—3	6	2	1	1	2		4		16	60 d	10 d	
15	Half-Villein	S		Geliain Meehol	4—2	7	3	2	1	1		12		48	60 d	18 d	
16	Villein	S		Keasden Durden	2—2	4	1	1		2		34	30	136	240 d	70 d	
17	Cottar/ Hunter	S	W	Omaais Gedoilm	2—1	3	1		1	1		0		0	60 d	6 d	
18	Charcoaler	C		Rivard Gemason	1—4	5	1	2	1	1			10	0	120 d	16 d	180 d
19	Villein	S		Lakier Akasas	2—4	6	1	2	1	2		25		100	60 d	31 d	
20	Villein	S	H	Dadazef Redaz	3—1	4	2	1		1		38		0	60 d	44 d	
21	Yeoman (MF)	Y		Gieholm Felthein	2—3	5	1	2	1	1			55	0	115 d	61 d	
22	Half-Villein	S		Aniner Durden	1—1	2	1	1				16		64	60 d	22 d	
23	Half-Villein	S		Akehden Ekiden	3—3	6	3	2	1			11		44	60 d	17 d	
24	Half-Villein	S		Gemehef Akasas	4—1	5	3	1	1			13		52	60 d	19 d	
25	Villein	S		Aldel Meehol	3—1	4	2	1	1			37	25	148	210 d	68 d	
26	Villein	S		Einas Durden	5—2	7	3	2	2			27		108	60 d	33 d	
27	Half-Villein	S		Ilvdan Hamitel	1—6	7	1	3	1	2		11		44	60 d	17 d	

VILLAGE CENSUS (Lavendel)

ID	TENANT	C	O	NAME	CLAN	HD ADULT		CHILDREN			ACRES		KIND			
						SIZE	M	F	8-12	0-7	ML	SERF	FREE	LABOR	RENT	FEES
1	Ebasethe	P		Enra Hamitel	2—2	4	2	1	1			27	0	0 d	0 d	
2	Innkeeper	C		Kemaas Ryver	4—2	6	2	1	1	2		5	0	90 d	11 d	216 d
3	Villein	S		Iatf Oref	2—4	6	1	3	2		37		148	60 d	43 d	
4	Half-Villein	S		Anatri Ekiden	2—1	3	1	1		1	11		44	60 d	17 d	
5	Villein	S		Osinr Kaifus	2—2	4	2	1	1		35		140	60 d	41 d	
6	Cottar	S		Ovmakard Tivlaan	1—0	1	1				3		12	60 d	9 d	
7	Cottar	S		Zehete Oref	1—1	2	1	1			0		0	60 d	6 d	
8	Woodcrafter	C		Ouer Kalerth	2—2	4	1	2		1		10	0	120 d	16 d	120 d
9	Half-Villein	S		Bisimia Nariail	1—2	3		2	1		14		56	60 d	20 d	
10	Villein	S		Esklain Hamitel	4—1	5	2	1	1	1	37		148	60 d	43 d	
11	Cottar	S		Ferur Durden	2—2	4	2	1	1		2		8	60 d	8 d	
12	Villein	S		Ladezr Kaifus	2—2	4	1	1	1	1	27		108	60 d	33 d	
13	Salter	C		Kaeon Mabete	1—1	2	1	1				15	0	150 d	21 d	120 d
14	Yeoman (LF)	Y		llehfam Evelias	2—3	5	2	1	2			50	0	110 d	56 d	
15	Villein	S		Osden Ekiden	4—0	4	3		1		25	25	100	210 d	56 d	
16	Cottar	S		Giinfam Akasas	2—3	5	1	2	2		2		8	60 d	8 d	
17	Miller	C		Lomakfam Enima	2—3	5	2	2	1			15	0	150 d	21 d	240 d
18	Half-Villein	S		Akuard Oref	2—0	2	2				17		68	60 d	23 d	
19	Villein	S		Tidazden Durden	3—2	5	1	1	1	2	33		132	60 d	39 d	
20	Cottar	S	B	liik Nariail	1—1	2	1		1		0		0	60 d	6 d	
21	Timberwright	C		Filhiem Gedoiln	0—4	4		2		2		20	0	180 d	26 d	216 d
22	Villein	S		Isifus Oref	1—4	5	1	2	1	1	34		136	60 d	40 d	
23	Yeoman (LF)	Y		Opier Kaifus	5—2	7	3	1	2	1		45	0	105 d	51 d	

LORD'S HOUSEHOLD

NAME	OCCUPATION	ML	EACH	#	TOTAL	LOY.
	Fiefholder		3.000 d		0 d	
	Spouse		2.000 d		0 d	
	Offspring		1.000 d		0 d	
	Relatives		1.500 d		0 d	
	Squire		1.200 d		0 d	
	Balliff		2.000 d		0 d	
	Steward		2.000 d		0 d	
	Chamberlain		800 d		0 d	
	Cook		500 d		0 d	
	Baker		400 d		0 d	
	Alewife		400 d		0 d	
	Cellarer		500 d		0 d	
	Gardener		400 d		0 d	
	Nursemaid		400 d		0 d	
	Domestics		300 d		0 d	
A, B	Clothier		900 d	2	1.800 d	
	Harper		600 d		0 d	
	Herald		1.500 d		0 d	
A	Innkeeper		900 d	1	900 d	
	Litigant		1.100 d		0 d	
	Mason		1.500 d		0 d	
A	Ostler		1.300 d	1	1.300 d	
	Physician		1.200 d		0 d	
	Priest		800 d		0 d	
	Sage / Tutor		1.200 d		0 d	
	Scribe		800 d		0 d	
A, B	Teamster		900 d	2	1.800 d	
	Weaponcrafter		1.800 d		0 d	
	Hideworker		900 d		0 d	
	Metalsmith		1.100 d		0 d	
	Salter		700 d		0 d	
	Timberwright		1.200 d		0 d	
A	Woodcrafter		1.000 d	1	1.000 d	
	Archbishop		5.000 d		0 d	
	Bishop		3.000 d		0 d	
Pelnala (Abbess) + 4 elder nuns	High Priest		1.500 d	5	7.500 d	
	Priest		800 d	15	12.000 d	
	Acolyte		400 d	80	32.000 d	
Meken (Laranian Soldiers)	Man-at-arms		576 d	4	2.304 d	
Meken (Laranian Sergeant)	Sergeant-at-arms		936 d	1	936 d	
	Shortbow		936 d		0 d	
Meken (Laranian Soldiers)	Longbow		1.296 d	2	2.592 d	
	Huntsman		2.016 d		0 d	
	Medium Horse		3.200 d		0 d	
Melana (Laranian Knights)	Household Knight		4.608 d	3	13.824 d	
	Kennels		600 d		0 d	
	Falconry		800 d		0 d	
	Palfreys		900 d	10	9.000 d	
	Warhorses		1.800 d	3	5.400 d	

MANOR INFORMATION

GENERAL DATA

Manor name	Chantaer
Held by	Balm of Joy
Liege	of Avandar
Hundred	Dyrien
Shire	Erynashire
Country	n of Kanday

Topography	ly Woodland
------------	-------------

ACREAGE	ACRES	%
Gross Acres	3940	100,0%
Woods	868	22,0%
Cleared	3072	78,0%
Tenant	1508	38,3%
Demesne	1564	39,7%
Waste (part of demesne)	12	0,3%

HOUSEHOLDS	#	%
Serf	50	76,9%
Farmer	1	1,5%
Craftsman	8	12,3%
Yeoman	4	6,2%
Priest	2	3,1%
Slave	0	0,0%
TOTAL	65	

FIEF DATA

Total Population	397
Fief Income	304.170 d
Lord's Privy Purse	14.556 d
Lifestyle	Lavish

Land Quality	0.98
Fief Index	1.20
Trade Index	0.75

LABOR	DAYS
Labor pool	31.500 days
Labor obligation	1.351 days
Labor Priests	27.500 days
Labor required(total)	44.284 days
Labor required(demesne)	13.175 days
Labor shortfall	-15.676 days

MANOR BUDGET

Land Quality	0.98
Fief Index	1.20
Climate HR-Modifier	+05
Weather Index	1.00
Trade Index	0.75

FIEF BUDGET		ACRES	LABOR	KIND
Woods		868	1.00	
Worked Woods	15,81%	623	1869	13.187,7 d
Crops	0.38	1156	7283	86.597,3 d
Pasture	0.62	1904	21231	226.606,9 d
Waste		12		
TOTAL HARVEST			30383	326.392 d
Seed Purchased		0	0.90	
- stored		0		0,0 d
Winter Feed		0	0.90	
- stored		0		0,0 d
Fief Maintenance		120%	13271.04	-26.542,1 d
Assart	7%	61		
- by Timberwrigth (w stumps)		40		1.800,0 d
- by Timberwright (w/o stumps)		0	0	0,0 d
- by Peasantry		21	630	2.520,0 d
- by Peasantry (clear new only)		0	0	
FIEF INCOME		!	44284	304.170 d

LORD'S BUDGET			KIND
Demesne income	1552		153.669,1 d
Tenant Rents & Fees			9.171,0 d
Glebe Revenue	60		5.570,0 d
Taxes & Tolls	5		900,0 d
Amercements	6	1.00	1.950,0 d
Feudal Income			0,0 d
TOTAL INCOME			171.260 d
Household			92.356,0 d
Feudal Payments		X	0,0 d
Tithe		23.36%	40.000,0 d
Labor Hired		1.25	16.468,4 d
Political Expenses		2.00	7.880,0 d
TOTAL EXPENSES			156.704 d

LIFESTYLE	Lavish	£ 653
-----------	--------	-------

PRIVY PURSE	14.556 d
-------------	----------

CROPS AND LIVESTOCK

CROP TYPE	MIX	RS	HR	YIELD	ACRES	LABOR	KIND
Rye	10%	1.00	+15	52,9 d	115,6	578	6.117,6 d
Barley	25%	1.00	+25	56,4 d	289,0	1734	16.313,5 d
Oats	10%	1.00	+20	49,4 d	115,6	578	5.709,7 d
Hay	10%	1.00	+25	47,0 d	115,6	578	5.437,8 d
Vegetables	15%	1.00	+05	94,1 d	173,4	1387	16.313,5 d
Flax	0%	1.00	-05	77,6 d	0,0	0	0,0 d
Wheat	0%	1.00	-15	84,7 d	0,0	0	0,0 d
Fruit	30%	1.00	-25	105,8 d	346,8	2428	36.705,3 d
TOTAL/AVG	1	1.00		74,9 d	11,9 d	7283	86.597,3 d

LIVESTOCK	MIX	HS	HR	YIELD	ACRES	LABOR	KIND
Oxen	20%	1.00	0	152,9 d	378,2	3214.7	28.909,6 d
Cows	10%	1.00	- 5	221,1 d	189,1	1891	20.903,9 d
Goats	0%	1.00	+10	47,0 d	0,0	0	0,0 d
Sheep	50%	1.00	- 10	38,8 d	945,5	8509.5	110.078,9 d
Swine	20%	1.00	+5	17,6 d	378,2	7564	66.714,5 d
Horses		1.00	+5	0,0 d	13,0	52	0,0 d
TOTAL/AVG	1	1.00		119,0 d	10,7 d	21231.2	226.606,9 d

HEAD COUNT	HEAD SUM	WIN
Oxen	189	189
Cows	95	47
Goats	0	0
Sheep	2837	1135
Swine	3782	378
Horses	13	13
TOTAL	6915	1762

WEATHER TABLE	
Kelen	1.00
Nolus	1.00
Larane	1.00
Agrazhar	1.00
Azura	1.00

NSC-Data

Priory

Pelnala (Abbess)

Alobia Seben (f)

HGT 66" WGT 145lbs FRM AVG.
CMX MEDIUM EYES BROWN HAIR BROWN

BIIRTH 16/09/689 (TAI)

STR 13 INT 13 EYE 15
END 13 AUR 13 HRG 18
DEX 15 WIL 14 SML 14
AGL 15 MOR 15 TOU 16
SPD 11 COM 12 VOI 12

Religion: Peoni (65 PP)

Condition 70 Riding 64
Dodge 75 Oratory 92
Initiative 68 Rhetoric 103
Mobility 55 Weatherlore 81
Unarmed 42 Seamanship 37
Awareness 64 Fishing 42
Intrigue 92 Agriculture 82
Ritual 96 Physician 37
Hârníc 95 Singing 87
Emela 91 Khruni/ sc 82
Folklore 84 Lakise/ sc 82

Ebasethe/Scribe

Revniina of Dimitel (f)

HGT 60" WGT 99lbs FRM SCANT
CMX FAIR EYES GREY HAIR BLOND

BIIRTH 24/08/693 (TARAE)

STR 09 INT 16 EYE 14
END 12 AUR 11 HRG 14
DEX 11 WIL 15 SML 11
AGL 16 MOR 11 TOU 15
SPD 12 COM 15 VOI 16

Religion: Peoni (25 PP)
Theophobia, Violent Temper

Condition 70 Oratory 34
Dodge 80 Rhetoric 51
Initiative 66 Goosecraft 37
Mobility 60 Agriculture 46
Unarmed 56 Hideworking 41
Awareness 60 Singing 45
Intrigue 67 Drawing 72
Ritual 62 Physician 15
Hârníc 65 Khruni/ sc 83
Emela 23 Lakise/ sc 83

Ebasethe/Clothier

Anama of Hunvele (f)

HGT 65" WGT 127lbs FRM LIGHT
CMX FAIR EYES GREY HAIR BLOND

BIIRTH 04/07/664 (NAD-HIRIN)

STR 10 INT 13 EYE 11
END 13 AUR 15 HRG 13
DEX 15 WIL 11 SML 14
AGL 16 MOR 12 TOU 14
SPD 12 COM 13 VOI 17

Religion: Peoni (9 PP)
Allergy

Condition 60 Oratory 28
Dodge 80 Rhetoric 42
Initiative 67 Textilecraft 101
Mobility 60 Apiarist 47
Unarmed 42 Alchemy 34
Awareness 60 Hideworking 63
Intrigue 39 Agriculture 22
Ritual 76 Physician 14
Hârníc 62 Emela 22
Lakise/ sc 82 Khruni/ sc 82

Ebasethe/Artisan

Navenda of Tadeain (f)

HGT 66" WGT 116lbs FRM SCANT
CMX MEDIUM EYES BLUE HAIR BROWN

BIIRTH 08/09/677 (TAI)

STR 12 INT 15 EYE 17
END 15 AUR 14 HRG 13
DEX 14 WIL 14 SML 13
AGL 17 MOR 13 TOU 16
SPD 13 COM 08 VOI 10

Religion: Peoni (20 PP)
Poxmarks

Condition 70 Oratory 22
Dodge 85 Rhetoric 42
Initiative 73 Fishing 45
Mobility 65 Agriculture 28
Unarmed 42 Hideworking 54
Awareness 56 Singing 49
Intrigue 45 Drawing 112
Ritual 86 Physician 17
Hideworking 56 Alchemy 31
Carving 81 Carpentry 52
Hârníc 103 Khruni/ sc 118
Emela 101 Lakise/ sc 103

Ebasethe/Miller/Chef

Ereama of Myrndron (f)

HGT 71" WGT 167lbs FRM AVERAGE
CMX MEDIUM EYES BROWN HAIR RED

BIIRTH 08/12/685 (LADO)

STR 16 INT 13 EYE 11
END 12 AUR 18 HRG 13
DEX 15 WIL 14 SML 15
AGL 12 MOR 12 TOU 13
SPD 09 COM 14 VOI 11

Religion: Peoni (24 PP)

Condition 65 Oratory 26
Dodge 60 Rhetoric 39
Initiative 62 Goosecraft 47
Mobility 45 Milling 86
Unarmed 48 Mechanics 82
Awareness 52 Singing 56
Intrigue 45 Cookery 94
Ritual 62 Physician 13
Hârníc 64 Khruni/ sc 82
Emela 42 Psychometry 17
Healing 34

Ebasethe/Apiarist

Biefua of Hevas (f)

HGT 63" WGT 120lbs FRM LIGHT
CMX MEDIUM EYES BROWN HAIR BROWN

BIIRTH 08/09/671 (TAI)

STR 09 INT 12 EYE 12
END 12 AUR 19 HRG 14
DEX 14 WIL 13 SML 10
AGL 13 MOR 12 TOU 12
SPD 09 COM 15 VOI 15

Religion: Peoni (31 PP)

Condition 65 Oratory 28
Dodge 65 Rhetoric 42
Initiative 61 Apiarist 98
Mobility 45 Agriculture 92
Unarmed 36 Weatherlore 83
Awareness 48 Singing 45
Intrigue 48 Folklore 53
Ritual 64 Physician 13
Hârníc 64 Khruni/ sc 81
Emela 41 Lakise/ sc 00
Prescience 18 Healing 17

Ebasethe/Farmer **Sanidia of Eskiot (f)**

HGT 64" WGT 137lbs FRM AVERAGE
CMX MEDIUM EYES RED HAIR BLUE

BIIRTH 06/01/667 (ULANDUS)

STR	11	INT	16	EYE	14
END	13	AJR	14	HRG	12
DEX	15	WIL	13	SML	15
AGL	15	MOR	16	TOU	12
SPD	13	COM	16	VOI	14

Religion: Peoni (44 PP)
Ambidextrous
Guilt Complex

Condition	65	Oratory	56
Dodge	75	Rhetoric	62
Initiative	69	Ratcraft	30
Mobility	65	Agriculture	113
Unarmed	48	Weatherlore	94
Awareness	56	Singing	39
Intrigue	62	Brewing	44
Ritual	71	Physician	13
Hâmic	74	Khruni/ sc	84
Emela	24	Cattlecraft	53

Ebasethe/Herder **Eraama of Meehol (f)**

HGT 63" WGT 133lbs FRM AVERAGE
CMX MEDIUM EYES BROWN HAIR BLOND

BIIRTH 09/07/689 (HIRIN)

STR	14	INT	14	EYE	17
END	12	AJR	14	HRG	12
DEX	12	WIL	11	SML	14
AGL	12	MOR	11	TOU	15
SPD	10	COM	15	VOI	16

Religion: Peoni (32 PP)

Condition	55	Oratory	37
Dodge	60	Rhetoric	62
Initiative	57	Cattlecraft	95
Mobility	50	Agriculture	56
Unarmed	39	Sheepcraft	102
Awareness	64	Singing	59
Intrigue	39	Pigcraft	86
Ritual	62	Physician	15
Hâmic	62	Goatcraft	92
Emela	42	Khruni/ sc	82

Archieve/Treasury

Avanasa **Erlama of Udazart (f)**

HGT 57" WGT 092lbs FRM SCANT
CMX MEDIUM EYES GREY HAIR BLOND

BIIRTH 06/03/647 (FENIRI)

STR	11	INT	13	EYE	12
END	13	AJR	19	HRG	13
DEX	11	WIL	15	SML	12
AGL	18	MOR	16	TOU	13
SPD	14	COM	13	VOI	13

Religion: Peoni (73 PP)
Allergy

Condition	70	Oratory	36
Dodge	90	Rhetoric	52
Initiative	71	Mathematics	92
Mobility	70	Agriculture	26
Unarmed	39	Hideworking	67
Awareness	48	Singing	39
Intrigue	81	Drawing	76
Ritual (Peoni)	97	Physician	13
Ritual (Morg.)	43	Ritual (Agrik)	23
Hâmic	104	Khruni/ sc	104
Emela	116	Lakise/ sc	115
Ormauk	76	Nuvesarl/ sc	98
Azeryani	87	Zerin	82
Negation	38	Disembodiment	18
Mental Bolt	18	Sensitivity	18

Ebasethe/Scribe **Linriola of Theaot (f)**

HGT 66" WGT 145lbs FRM AVERAGE
CMX MEDIUM EYES BROWN HAIR BLOND

BIIRTH 16/09/697 (TAI)

STR	14	INT	14	EYE	13
END	14	AJR	13	HRG	09
DEX	13	WIL	12	SML	17
AGL	14	MOR	11	TOU	14
SPD	10	COM	12	VOI	14

Religion: Peoni (19 PP)

Condition	60	Oratory	36
Dodge	70	Rhetoric	42
Initiative	63	Mathematics	74
Mobility	50	Agriculture	26
Unarmed	42	Hideworking	56
Awareness	52	Singing	56
Intrigue	52	Drawing	41
Ritual	74	Physician	15
Hâmic	64	Khruni/ sc	82
Emela	42	Lakise/ sc	82

Seminary

Solana **Femeanone of Likir (f)**

HGT 62" WGT 104lbs FRM SCANT
CMX MEDIUM EYES BROWN HAIR BLACK

BIIRTH 23/11/674 (MASARA)

STR 14 INT 15 EYE 16
END 12 AUR 13 HRG 12
DEX 15 WIL 15 SML 17
AGL 17 MOR 14 TOU 14
SPD 13 COM 15 VOI 15

Religion: Peoni (51 PP)
Ambidextrous

Condition	70	Oratory	86
Dodge	85	Rhetoric	94
Initiative	72	Folklore	85
Mobility	85	Agriculture	68
Unarmed	51	Cookery	67
Awareness	96	Singing	63
Intrigue	84	Law	96
Ritual	92	Physician	46
Hârníc	65	Khruni/ sc	82
Emela	85	Lakise/ sc	82

Ebasethe/Teacher **Navaem of Ledais (f)**

HGT 67" WGT 119lbs FRM SCANT
CMX FAIR EYES BLUE HAIR BROWN

BIIRTH 08/05/688 (ANGBEREL.)

STR 10 INT 14 EYE 15
END 16 AUR 17 HRG 15
DEX 16 WIL 14 SML 13
AGL 12 MOR 10 TOU 15
SPD 15 COM 11 VOI 10

Religion: Peoni (9 PP)

Condition	70	Oratory	96
Dodge	80	Rhetoric	89
Initiative	68	Mathematics	56
Mobility	60	Agriculture	45
Unarmed	45	Law	64
Awareness	56	Singing	56
Intrigue	55	Folklore	69
Ritual	75	Physician	34
Hârníc	84	Khruni/ sc	83
Shorka	71	Azeryani	64
Emela	98	Lakise/ sc	83
Medium	16	Healing	16

Ebasethe/Teacher **Tanefua of Rebeer (f)**

HGT 63" WGT 133lbs FRM AVERAGE
CMX DARK EYES BROWN HAIR BLACK

BIIRTH 24/01/677 (ULANDUS)

STR 15 INT 13 EYE 17
END 12 AUR 17 HRG 13
DEX 14 WIL 13 SML 13
AGL 12 MOR 18 TOU 10
SPD 08 COM 13 VOI 13

Religion: Peoni (93 PP)
Birthmarks

Condition	65	Oratory	86
Dodge	60	Rhetoric	103
Initiative	59	Acting	62
Mobility	40	Agriculture	30
Unarmed	48	Mathematics	61
Awareness	56	Singing	86
Intrigue	42	Tarotry	72
Ritual	83	Physician	11
Hârníc	63	Khruni/ sc	83
Emela	23	Lakise/ sc	83
Trierzi	75	Runic/ sc	83
Prescience	16	Sensitivity	16

Hospital

Lerovana **Sanoua of Keron (f)**

HGT 58" WGT 118lbs FRM XXX
CMX MEDIUM EYES GREY HAIR BLOND

BIIRTH 25/09/654 (TAI)

STR 14 INT 15 EYE 16
END 12 AUR 16 HRG 14
DEX 12 WIL 16 SML 12
AGL 14 MOR 13 TOU 13
SPD 10 COM 13 VOI 16

Religion: Peoni (29 PP)

Condition	75	Oratory	50
Dodge	70	Rhetoric	61
Initiative	64	Herblore	68
Mobility	50	Agriculture	78
Unarmed	39	Foraging	43
Awareness	56	Singing	85
Intrigue	91	Alchemy	62
Ritual	89	Physician	106
Knife	56	Mathematics	65
Hârníc	97	Khruni/ sc	82
Emela	82	Lakise/ sc	82
Healing	16	Clairvoyance	17

Ebasethe/Apothecary **Tivrauna of Ridazol (f)**

HGT 67" WGT 134lbs FRM LIGHT
CMX MEDIUM EYES VIOLET HAIR WHITE

BIIRTH24/5/687 (ANGBEREL.)

STR 14 INT 13 EYE 14
END 12 AUR 13 HRG 14
DEX 13 WIL 14 SML 14
AGL 13 MOR 10 TOU 15
SPD 14 COM 11 VOI 13

Religion: Peoni (12 PP)
Left-Handed

Condition	65	Oratory	24
Dodge	65	Rhetoric	39
Initiative	66	Herblore	93
Mobility	70	Agriculture	86
Unarmed	13	Alchemy	79
Awareness	56	Singing	39
Intrigue	39	Mathematics	76
Ritual	85	Physician	53
Survival	76	Foraging	85
Hârníc	64	Khruni/ sc	83
Emela	53	Lakise/ sc	83

Ebasethe/Apothecary **Revlavia of Barayn (f)**

HGT 64" WGT 110lbs FRM SCANT
CMX DARK EYES BROWN HAIR BLACK

BIIRTH 28/10/696 (SKORUS)

STR 11 INT 14 EYE 13
END 17 AUR 17 HRG 13
DEX 12 WIL 13 SML 13
AGL 19 MOR 14 TOU 12
SPD 15 COM 13 VOI 13

Religion: Peoni (39 PP)
Kleptomania

Condition	75	Oratory	26
Dodge	95	Rhetoric	42
Initiative	76	Herblore	76
Mobility	75	Agriculture	28
Unarmed	42	Foraging	00
Awareness	52	Singing	61
Intrigue	48	Alchemy	41
Ritual	69	Physician	44
Mathematics	43	Survival	52
Hârníc	63	Khruni/ sc	82
Emela	42	Lakise/ sc	82
Medium	39	Telepathy	17

Ebasethe/Physician Revtuama of Hamitel (f)

HGT 64" WGT 123lbs FRM LIGHT
CMX DARK EYES GREEN HAIR GRAY

BIIRTH 17/12/662 (LADO)

STR	11	INT	11	EYE	15
END	14	AJR	16	HRG	13
DEX	14	WIL	11	SML	15
AGL	17	MOR	12	TOU	18
SPD	13	COM	15	VOI	14

Religion: Peoni (26 PP)

Condition	65	Oratory	36
Dodge	85	Rhetoric	56
Initiative	69	Brewing	56
Mobility	65	Agriculture	24
Unarmed	48	Herblore	67
Awareness	56	Singing	52
Intrigue	39	Alchemy	37
Ritual	91	Physician	109
Hârníc	71	Khruni/ sc	81
Emela	41	Lakise/ sc	81
		Clairvoyance	48

Ebasethe/Physician Danaea of Teidan (f)

HGT 65" WGT 113lbs FRM SCANT
CMX DARK EYES BLUE HAIR RED

BIIRTH 30/03/683 (FENIRI)

STR	12	INT	09	EYE	14
END	13	AJR	13	HRG	16
DEX	13	WIL	13	SML	13
AGL	14	MOR	10	TOU	16
SPD	10	COM	14	VOI	14

Religion: Peoni (18 PP)
Drug Addiction; Sonambulism

Condition	00	Oratory	24
Dodge	70	Rhetoric	36
Initiative	63	Flute	61
Mobility	50	Agriculture	46
Unarmed	73	Herblore	65
Awareness	56	Singing	65
Intrigue	76	Alchemy	51
Ritual	72	Physician	86
Textilecraft	31	Carpentry	23
Hârníc	72	Khruni/ sc	80
Emela	30	Lakise/ sc	80

Distillery

Ebasethe/High Cellaress Lanmaola of Ledik (f)

HGT 63" WGT 133lbs FRM AVERAGE
CMX MEDIUM EYES BROWN HAIR BROWN

BIIRTH 10/12/665 (LADO)

STR	12	INT	16	EYE	12
END	14	AJR	13	HRG	15
DEX	11	WIL	15	SML	13
AGL	16	MOR	16	TOU	12
SPD	12	COM	12	VOI	10

Religion: Peoni (43 PP)

Condition	70	Oratory	46
Dodge	80	Rhetoric	62
Initiative	68	Brewing	113
Mobility	60	Agriculture	48
Unarmed	45	Herblore	53
Awareness	82	Singing	36
Intrigue	65	Alchemy	51
Ritual	82	Physician	23
Hârníc	65	Khruni/ sc	83
Emela	53	Cookery	81
Goosecraft	42	Pigcraft	53

Ebasethe/Celleress Filriem of Teder (f)

HGT 66" WGT 145lbs FRM AVERAGE
CMX MEDIUM EYES BROWN HAIR RED

BIIRTH 10/11/684 (MASARA)

STR	11	INT	14	EYE	13
END	14	AJR	15	HRG	12
DEX	18	WIL	13	SML	15
AGL	13	MOR	11	TOU	10
SPD	13	COM	15	VOI	11

Religion: Peoni (14 PP)
Left-Handed

Condition	67	Oratory	26
Dodge	65	Rhetoric	39
Initiative	71	Brewing	82
Mobility	65	Agriculture	36
Unarmed	48	Herblore	41
Awareness	72	Singing	36
Intrigue	42	Alchemy	34
Ritual	72	Physician	23
Hârníc	63	Khruni/ sc	82
Emela	42	Pigcraft	44

Laranian Guard

Laranian Knight-Commander (Melana)

Hevel of Jocun

HGT 69" WGT 141lbs FRM LIGHT
CMX MEDIUM EYES BROWN HAIR RED

BIIRTH 24/10/674 (SKORUS)

STR 12 INT 15 EYE 11
END 11 AUR 14 HRG 12
DEX 13 WIL 11 SML 13
AGL 12 MOR 13 TOU 15
SPD 10 COM 13 VOI 14

Religion: Larani (68 PP)
Neophobia

Condition	55	Riding	88
Dodge	75	Knightshield	76
Initiative	89	Spear	65
Mobility	50	Bastard Sw.	81
Unarmed	51	Short Sword	89
Awareness	56	Lance	85
Intrigue	84	Knife	56
Ritual	14	Physician	21
Hârníc	82	Lute	26
Heraldry	67	Horn	65

Laranian Knight (Melana) Eriik

HGT 71" WGT 150lbs FRM LIGHT
CMX MEDIUM EYES BROWN HAIR BLOND

BIIRTH 26/08/689 (TARAE)

STR 14 INT 12 EYE 17
END 16 AUR 13 HRG 10
DEX 13 WIL 17 SML 15
AGL 13 MOR 11 TOU 15
SPD 10 COM 13 VOI 12

Religion: Larani (33 PP)
Heptephobia

Condition	75	Riding	76
Dodge	65	Kiteshield	62
Initiative	69	Mace	62
Mobility	50	Estoc	67
Unarmed	39	Warhammer	84
Awareness	64	Lance	64
Intrigue	60	Dagger	41
Ritual	13	Crossbow	45
Hârníc	85	Physician	14
Heraldry	48	Drum	27
Lute	26		

Laranian Knight (Melana) Aldezte

HGT 69" WGT 173lbs FRM HEAVY
CMX MEDIUM EYES BROWN HAIR BROWN

BIIRTH 12/08/693 (TARAE)

STR 12 INT 13 EYE 12
END 09 AUR 14 HRG 14
DEX 14 WIL 14 SML 16
AGL 11 MOR 10 TOU 15
SPD 10 COM 12 VOI 09

Religion: Larani (48 PP)
Skars (abdomen)

Condition	60	Riding	62
Dodge	55	Kiteshield	69
Initiative	58	Bastard Sw.	39
Mobility	50	Broadsword	69
Unarmed	36	Shortsword	71
Awareness	64	Lance	57
Intrigue	60	Taburi	39
Ritual	11	Physician	14
Hârníc	84	Heraldry	42
Drum	28	Horn	14

Laranian Knight (Melana) Beledim (f)

HGT 73" WGT 158lbs FRM LIGHT
CMX MEDIUM EYES BROWN HAIR BLOND

BIIRTH 24/05/698 (ANGBER.)

STR 12 INT 12 EYE 16
END 17 AUR 15 HRG 09
DEX 14 WIL 13 SML 18
AGL 18 MOR 11 TOU 14
SPD 16 COM 12 VOI 17

Religion: Larani (19 PP)

Condition	70	Riding	67
Dodge	90	Roundshield	67
Initiative	76	Buckler	76
Mobility	70	Keltan	72
Unarmed	79	Longknife	74
Awareness	66	Bastard Sw.	62
Intrigue	52	Maul	81
Ritual	23	Shortbow	43
Physician	19	Heraldry	42
Hârníc	82	Flute	37

Laranian Sergeant Kemakfam

HGT 68" WGT 153lbs FRM AVERAGE
CMX MEDIUM EYES BROWN HAIR BLOND

BIIRTH 14/05/686 (ANGBEREL.)

STR 16 INT 09 EYE 10
END 13 AUR 12 HRG 14
DEX 14 WIL 12 SML 13
AGL 11 MOR 11 TOU 15
SPD 16 COM 13 VOI 09

Religion: Larani (45 PP)

Condition	85	Riding	65
Dodge	55	Roundshield	85
Initiative	96	Dagger	51
Mobility	80	Shorkana	83
Unarmed	97	Shortsword	94
Awareness	68	Handaxe	52
Intrigue	64	Pike	72
Ritual	19	Physician	33
Hârníc	61	Foraging	41
Survival	62	Heraldry	44
Agriculture	28	Wolfcraft	62
Weatherlore	33	Brewing	14

Laranian Soldier (Meken) Kemias

HGT 69" WGT 157lbs FRM AVERAGE
CMX MEDIUM EYES BROWN HAIR BLOND

BIIRTH 18/2/687 (ARALUIS)

STR 11 INT 13 EYE 11
END 13 AUR 12 HRG 14
DEX 13 WIL 11 SML 12
AGL 12 MOR 15 TOU 14
SPD 12 COM 14 VOI 11

Religion: Larani (51 PP)
Scars(right hand)

Condition	60	Poleaxe	86
Dodge	60	Roundshield	86
Initiative	61	Warhammer	56
Mobility	60	Falchion	96
Unarmed	56	Shortsword	91
Awareness	48	Maul	65
Intrigue	36	Knife	52
Ritual	12	Physician	14
Hârníc	62	Heraldry	24
Survival	34	Foraging	42

Laranian Soldier (Meken) Revdan

HGT 64" WGT 151lbs FRM HEAVY
CMX MEDIUM EYES BROWN HAIR BLACK

BIIRTH 29/01/678 (ULANDUS)

STR 12 INT 10 EYE 12
END 14 AJR 15 HRG 14
DEX 13 WIL 13 SML 14
AGL 11 MOR 10 TOU 17
SPD 15 COM 11 VOI 11

Religion: Larani (8 PP)
Astraphobia

Condition 67 Hatchet 66
Dodge 55 Longknife 88
Initiative 66 Warhammer 76
Mobility 75 Trident 79
Unarmed 42 Shortsword 81
Awareness 52 Roundshield 78
Intrigue 39 Knife 49
Ritual 11 Physician 15
Hâmic 62 Foraging 42
Survival 42 Heraldry 28
Horsecraft 13

Laranian Soldier (Meken) Reatulm

HGT 69" WGT 173lbs FRM HEAVY
CMX MEDIUM EYES BROWN HAIR BLACK

BIIRTH 08/04/696 (AHNU)

STR 14 INT 15 EYE 15
END 13 AJR 12 HRG 14
DEX 17 WIL 11 SML 13
AGL 10 MOR 11 TOU 15
SPD 13 COM 13 VOI 15

Religion: Larani (26 PP)
Ambidextrous
Sonambulism

Condition 73 Warhammer 62
Dodge 54 Rounddshield 74
Initiative 74 Pike 82
Mobility 65 Longbow 62
Unarmed 42 Falchion 67
Awareness 56 Staff 68
Intrigue 39 Stealth 75
Ritual 15 Physician 35
Hâmic 62 Foraging 42
Survival 45 Heraldry 28

Laranian Soldier (Meken) Ledefus

HGT 63" WGT 133lbs FRM AVERAGE
CMX MEDIUM EYES BLUE HAIR GRAY

BIIRTH 30/8/693 (TARAE)

STR 13 INT 16 EYE 14
END 13 AJR 16 HRG 15
DEX 12 WIL 09 SML 12
AGL 14 MOR 09 TOU 11
SPD 14 COM 10 VOI 10

Religion: Larani (30 PP)
Sterile
Agoraphobia

Condition 55 Battleaxe 79
Dodge 70 Roundshield 86
Initiative 72 Spear 86
Mobility 70 Poleaxe 72
Unarmed 42 Shortsword 81
Awareness 64 Staff 66
Intrigue 45 Heraldry 22
Ritual 13 Physician 23
Hâmic 61 Foraging 42
Survival 42

Laranian Soldier (Meken) Dieari

HGT 68" WGT 153lbs FRM AVERAGE
CMX FAIR EYES GREY HAIR BLOND

BIIRTH 23/2/672 (ARALIUS)

STR 09 INT 11 EYE 15
END 12 AJR 15 HRG 14
DEX 12 WIL 12 SML 11
AGL 12 MOR 11 TOU 15
SPD 16 COM 13 VOI 12

Religion: Larani (68 PP)
Melancholia

Condition 60 Roundshield 74
Dodge 60 Club 86
Initiative 94 Shorkana 75
Mobility 80 Battleaxe 71
Unarmed 33 Shortbow 67
Awareness 52 Longbow 63
Intrigue 49 Heraldry 38
Ritual 12 Physician 24
Hâmic 62 Foraging 42
Survival 66 Fletching 38

Laranian Soldier (Meken) Usmaain

HGT 65" WGT 155lbs FRM HEAVY
CMX FAIR EYES GREEN HAIR BLACK

BIIRTH 26/10/679 (SKORUS)

STR 15 INT 11 EYE 14
END 13 AJR 15 HRG 13
DEX 12 WIL 13 SML 16
AGL 14 MOR 17 TOU 11
SPD 10 COM 12 VOI 13

Religion: Larani (48 PP)
Alcoholism
Hydrophobia, Xenophobia

Condition 65 Fighting Claw 65
Dodge 70 Tower Shield 71
Initiative 62 Longknife 72
Mobility 50 Pike 83
Unarmed 42 Longbow 82
Awareness 56 Warhammer 61
Intrigue 42 Fletching 38
Ritual 12 Physician 22
Hâmic 72 Foraging 52
Survival 39 Heraldry 38
Metalcraft 43 Carpentry 33

Laranian Soldier (Meken) Inumimia (f)

HGT 65" WGT 127lbs FRM LIGHT
CMX DARK EYES BROWN HAIR BROWN

BIIRTH 15/02/692 (ARALIUS)

STR 12 INT 14 EYE 15
END 17 AJR 14 HRG 12
DEX 14 WIL 15 SML 13
AGL 15 MOR 11 TOU 15
SPD 13 COM 10 VOI 17

Religion: Larani (32 PP)

Condition 80 Roundshield 62
Dodge 75 Dagger 56
Initiative 84 Whip 42
Mobility 65 Spear 76
Unarmed 42 Glaive-Bill 62
Awareness 52 Longbow 92
Intrigue 00 Crossbow 75
Ritual 16 Physician 25
Hâmic 75 Carpentry 32
Riding 64 Horsecraft 51
Fletching 53